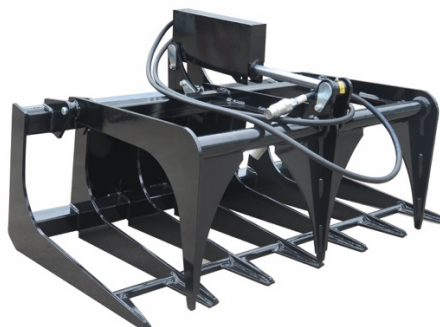


# Skid Steer Grapple



SSGB2242/SSGB2254



SSGB60/SSGB72/SSGB84

## Operator' s Manual

### **TO THE OPERATOR OF THIS IMPLEMENT**

**Please read this manual “before” unpacking or using this implement for the first time. This manual provides you with the necessary instructions to safely install and use your purchase. Do not let other people use this attachment without first being instructed how to safely use it.**

# CONTENTS

Importance of Safety.....	3
Operator Safety Training Tips.....	3
Skid Steer Requirements.....	4
Using Your Implement.....	5
Maintaining your Attachment .....	7
Specifications .....	8
Parts Diagram/ Exploded View.....	9
SSGB2242/SSGB2254.....	9
SSGB60/SSGB72/SSGB84.....	11

# Importance of Safety

---

Accidents can be very costly to human life and property. As the operator is the safety device on all types of vehicles or equipment, it is important that the operator read, learn and know all safety recommendations for this product. The user is responsible to his family, friends and co-workers to operate in a safe manner. Ensure that everyone who operates or assists in the operation or maintenance of this product read and understand all the elements required to safely operate this piece of equipment.

This attachment has moving parts that include additional dangers.

Throughout this manual you will find safety notes which are very important to read and understand before operating this piece of equipment. These classifications alert you to situations that could be harmful to you or bystanders. When you see these alerts in the manual, carefully read and follow all instructions and also protect other workers from the same danger.

## Operator Safety Training Tips

---

It is the responsibility of the operator using this attachment to be acquainted with the safe operation. In addition to reading this manual, it is important that the operator read the skid steer's operation manual and follow its manufacturer's recommendations!

- ⚠ Before lifting, lowering or tilting the blade, make sure the area is clear of bystanders or objects.
- ⚠ Machinery parts sometimes have sharp edges. Wear work gloves when moving parts. Always use caution around attachment parts as they often are very sharp.
- ⚠ Never use drugs or alcoholic drinks when operating or servicing this piece of equipment.
- ⚠ Always wear the proper personal protection equipment when servicing or operating this piece of equipment. Never service or operate this attachment with bare feet, sandals, or other light footwear.
- ⚠ Always use eye protection during operation.
- ⚠ Speed Kills! Operate this implement at a safe working speed. When transporting the implement, keep a safe speed to avoid losing control of the attachment or prime mover.
- ⚠ Keep proper clearance between the implement and objects (utilities, tree stumps, large rocks, buildings, etc.). Contacting these objects with the implement or prime mover could cause a loss of control or damage to the implement or property.

- ⚠ Before each operation of this implement, check all hardware (bolts, nuts, pins, etc.) for their proper location and tightness.
- ⚠ Stop the engine on the skid steer and set the brake to avoid the implement rolling forward or backwards while you are exiting the prime mover.
- ⚠ Store this implement in an area not frequented by children.
- ⚠ Allow no riders on this attachment. Keep all bystanders clear of attachment during operation.
- ⚠ Always replace worn, torn or missing safety decals before operating.
- ⚠ Never operate the attachment when bystanders are within 10 feet (3 m) of the work area.
- ⚠ Operate only during daylight or well-lit artificial light.

## **Skid Steer Requirements**

---

Your grapple attachment must be connected to a skid steer with adequate horsepower and weight to provide satisfactory results. Tracked loaders will provide superior traction in ground engaging applications and wheeled loaders may provide the best option for above ground material handling applications.

The attachment plate on your grapple attachment will connect to the couplers on most major brand skid steer loaders. Do not modify the attachment plate on this attachment to fit older styles of attachment couplers on older machines. Contact your skid steer loader dealer to supply an updated coupler on an older skid steer to fit this attachment.

### **⚠ CAUTION**

Make sure your skid steer is in good working condition. Follow the operating instructions found in the manual that accompanied your skid steer. Failure to do so could result in Minor or Serious Injury.

# Using Your Implement

---

## Connecting Attachment to Skid Steer

### **⚠ DANGER**

Never enter the area underneath the coupler or any part of the attachment when it is in the raised position to avoid an accident that will result in Death or Serious Injury. Verify that the hydraulic hoses are clear from the front of the attaching plate on the attachment and that the mounting plate is free from dirt and debris. When clear, move the skid steer to proximity of attachment plate. Tilt skid steer coupler forward to align coupling point with the upper part on the attachment plate and raise the coupler slightly.



Connecting Coupler to Attachment

When the top edge of the coupler is seated in the top part of the coupler plate, roll the skid steer tilt function back until the attaching plate is flat against the skid steer coupler. Lock down the coupler levers. Note: If your skid steer is equipped with a hydraulically operated coupler, activate the coupler lock at this time.

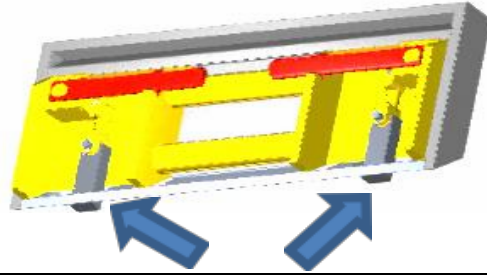
### **NOTICE**

Wipe off any dirt or dust from hydraulic couplers with a clean rag before attaching hoses, to keep contaminants from entering the hydraulic system.

Connect the attachment hydraulic hoses to the auxiliary supply couplers located on your skid steer loader lift arm.

Check the surrounding area for bystanders and clear them before starting the skid steer or attachment.

Before operating the attachment, always visually inspect and verify that the coupler lock pins are fully engaged through the latch slots on the attachment plate.



Check Coupler Lock Engagement

## Pre-Operation Walk-around Inspection

Before every use, it is important to perform a short inspection and certain maintenance on your grapple attachment.

	Item
<input type="checkbox"/> ✓	Check that all shields and guards are in place.
<input type="checkbox"/> ✓	Look for loose bolts and tighten them if necessary.
<input type="checkbox"/> ✓	Check that all safety decals are in place and can be read. Replace them if necessary.
<input type="checkbox"/> ✓	Take care of our environment. Repair any hydraulic leaks.

## Grapple Attachment Controls

Your grapple attachment is designed to run off the skid steer loader auxiliary hydraulic system, with the additional grapple open & close function activated by a control switch, pedal or handle in the operator's cab. Consult your skid steer operator's manual for precise instructions on how to activate, reverse and neutralize the auxiliary circuit.

Height and tilt functions of the attachment are operated with the control handles or pedals in the cab. Consult your skid steers operator's manual for precise instructions regarding these functions.

## Before Using the Grapple the First Time

Moving the attachment with bystanders in the area could result in Death or Serious Injury. Before moving the attachment or machine, always make sure the area is clear of bystanders.

# **Maintaining your Attachment**

---

## **Before Every Use**

Check that all fasteners (nuts, bolts, pins, keepers) are in their right place and are tight.

Inspect and replace any worn, torn or missing safety decals.

Investigate the location of any oil leaks and repair.

Lubricate all pivot joints with grease.

## **Every Week**

Check the condition of the cutting edge and/or tooth points. Order parts if the cutting edge or points are becoming worn and replace as soon as possible.

## **After Every Season**

Inspect the implement for any loose or worn parts that may need to be replaced prior to the next season.

Visually inspect the cutting edge. Replace, if necessary.

Clean, sand & repaint any area that looks worn or scratched to prevent further rusting. Use an equipment- paint found at your local hardware store or building center.

Replace any warning decals that have been lost or damaged.

Store your implement in a shed or cover with a water-proof tarp to protect it from the weather. Store in an area not frequented by children.

## **Hydraulic System**

A small stream of oil from a pinhole leak could penetrate your skin if contacted. To avoid an accident that could result in Death or Serious Injury, never use your hand or other body parts in an attempt to locate a hydraulic leak.

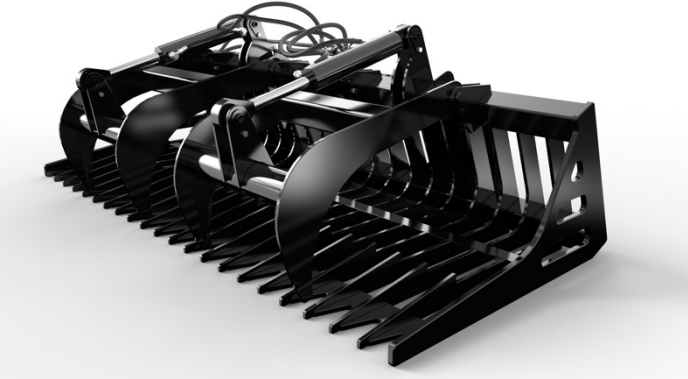
### **NOTICE**

Always release the hydraulic system pressure from the hydraulic circuits prior to removing the attachment or any hydraulic system service work.

# Specifications



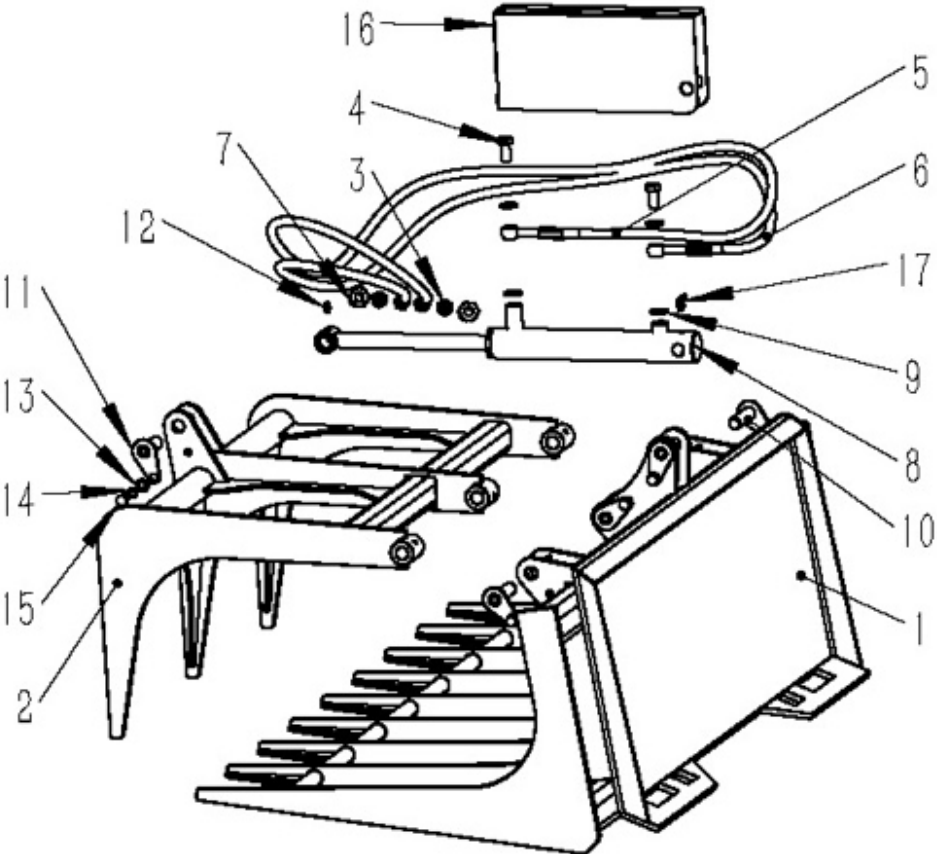
Model	SSGB2242	SSGB2254
Weight	235lbs/107kg	310lbs/141kg
Width	42" /1066mm	54" /1371mm
Opening Height	22" /559mm	



Model	SSGB60	SSGB72	SSGB84
Weight	650lbs/295kg	700lbs/318kg	800lbs /363kg
Width	60" /1524mm	72" /1829mm	84"/2134mm
Opening Height	34" /864mm	34" /864mm	34" /864mm
Teeth Length	24" /610mm		

# Parts Diagram/ Exploded View

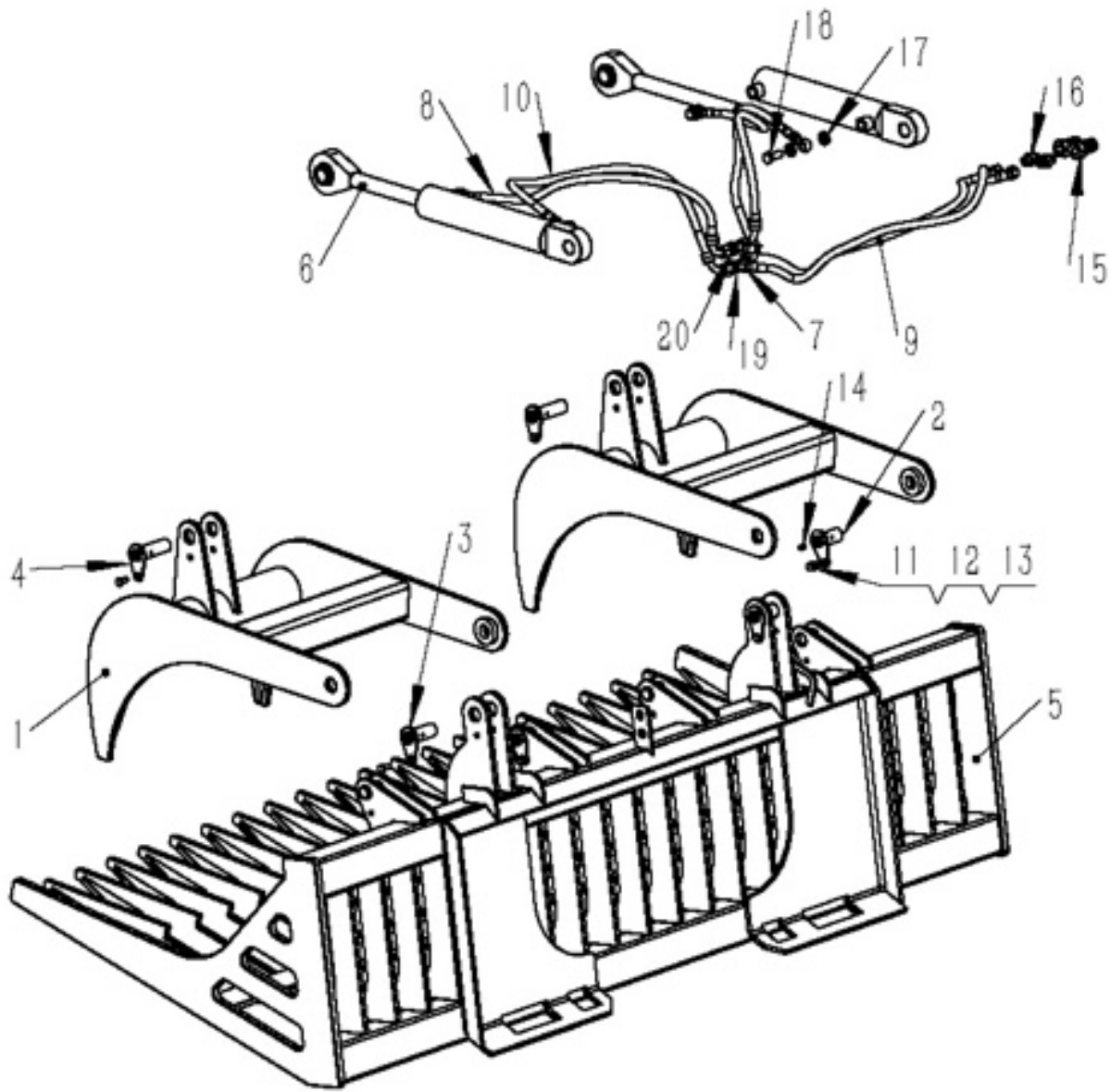
SSGB2242/SSGB2254



## SSGB2242/SSGB2254

ITEM	PART NUMBER	DESCRIPTION	QTY
1	SZT42.1	Grapple Main Frame	1
2	ZT42.2	Clamp Weldment	1
3	GE08LR1/2ED	Oil Connection	2
4	JB/T 978	Banjo Bolt M14*1.5*32	2
5	SZT42.3.1	Oil Hose 01	1
6	SZT42.3.2	Oil Hose 02	1
7	GB/T 5862	Hydraulic Quick Couplings G1/2 (Male)	2
8	SZT42.3.3	Hydraulic Cylinder	1
9	JB/T 982	Combined Gasket 14	4
10	ZT42.4	Pin 01	4
11	ZT42.5	Pin 02	1
12	JB/T 7940.1	Grease Fitting M8	4
13	GB/T 97.1	Washer $\phi$ 10	5
14	GB/T 93	Spring Washer $\phi$ 10	5
15	GB/T 5783	Bolt M10 $\times$ 20	5
16	ZT42.6	Cylinder Cover	1
17	JB/T 7940.2	Grease Fitting M8, 45°	4

SSGB60/SSGB72/SSGB84



## SSGB60/SSGB72/SSGB84

ITEM	PART NUMBER	DESCRIPTION	QTY
1	ZG72.1	Clamp Weldment	2
2	ZG72.2	Pin 01	4
3	ZG72.3	Pin 02	2
4	ZG72.4	Pin 03	2
5	ZG60.5	Grapple Main Frame	1
	ZG72.5		1
	ZG84.5		1
6	ZG72.6	Hydraulic Cylinder	2
7	ZG72.7	Tee Coupling	2
8	ZG72.8	Oil Hose 01	2
9	ZG72.9	Oil Hose 02	2
10	ZG72.10	Oil Hose 03	2
11	GB5783	Bolt M8*16	8
12	GB93.1	Spring Washer φ8	8
13	GB97.1	Washer φ8	8
14	JB/T 7940.1	Grease Fitting M8	8
15	GB/T 5862	Hydraulic Quick Couplings G1/2 (Male)	2
16	GE10SR1/2ED	Oil Connection M16*1.5-G1/2	2
17	JB982-2000	Combined Gasketφ18	8
18	GB3750.3-83	Banjo Bolt M18*1.5*35	4
19	GB97.1	Washer φ16	2
20	GB/T6173	Lock Nut M16*1.5	2