



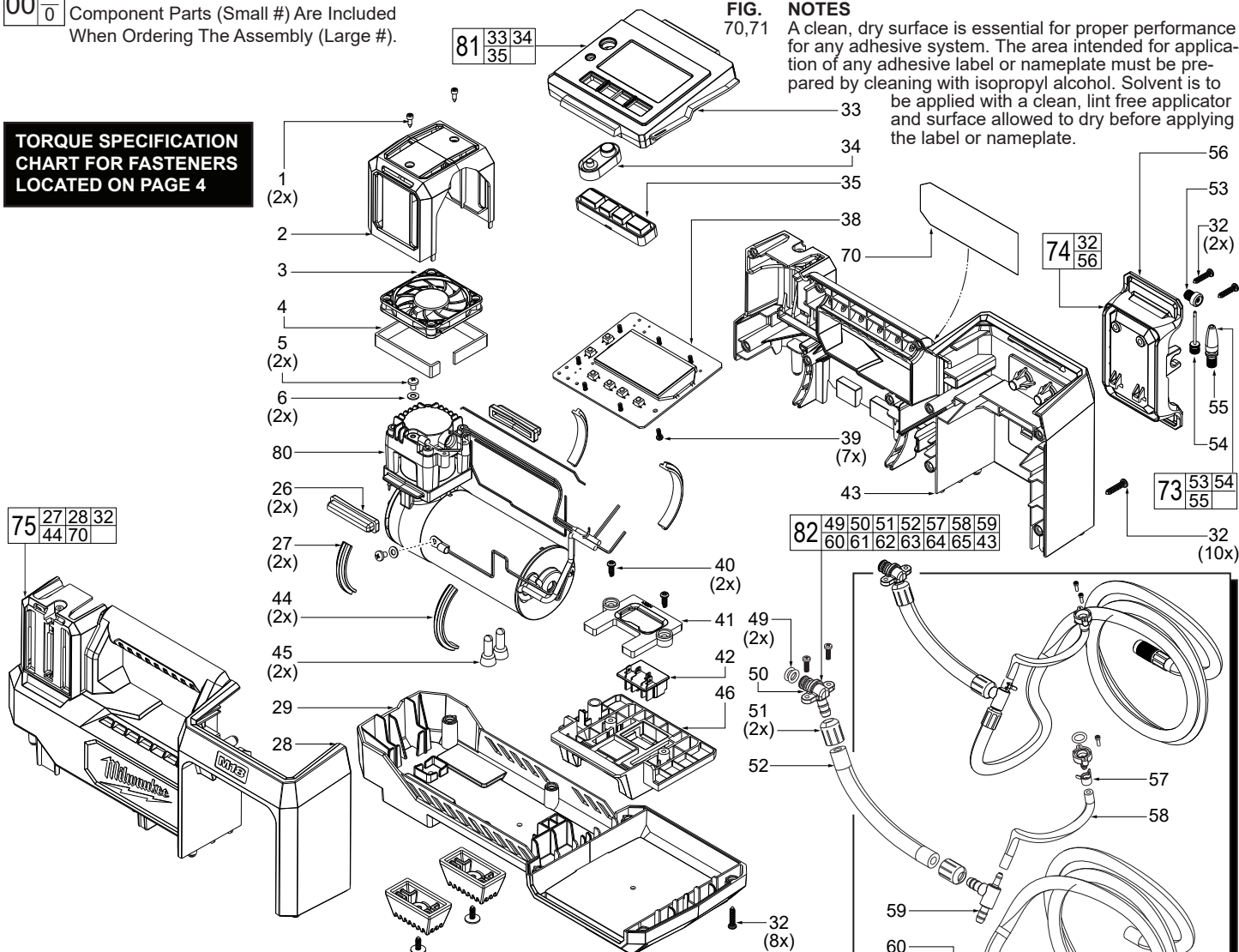
SERVICE PARTS LIST

BULLETIN NO.
54-05-2480

| | | | |
|--|----------------|--|-------------|
| SPECIFY CATALOG NO. AND SERIAL NO. WHEN ORDERING PARTS | | REVISED BULLETIN | DATE |
| M18™ INFLATOR | | | Mar. 2024 |
| CATALOG NO. | 2848-20 | STARTING SERIAL NO. | M26A |
| | | WIRING INSTRUCTION See pages 2 and 3 | |

EXAMPLE:
Component Parts (Small #) Are Included
When Ordering The Assembly (Large #).

**TORQUE SPECIFICATION
CHART FOR FASTENERS
LOCATED ON PAGE 4**



| FIG. | PART NO. | DESCRIPTION OF PART | NO. REQ. |
|------|------------|---------------------------------------|----------|
| 1 | 06-82-0269 | M3 x 10mm Pan Hd. T-10 Screw | (2) |
| 2 | 42-32-0027 | Pump Head | (1) |
| 3 | 22-84-0019 | Fan | (1) |
| 4 | 44-52-0082 | SBR Pad | (1) |
| 5 | 06-81-0220 | M4 x 6mm Pan Wash. Hd. Phillips Screw | (2) |
| 6 | 45-88-0313 | Flat Washer | (2) |
| 26 | 44-52-0098 | Support Pad | (2) |
| 27 | 44-52-0101 | Motor Pad (Small) | (2) |
| 28 | ----- | Front Housing | (1) |
| 29 | 42-92-0264 | Base | (1) |
| 30 | 44-52-0037 | Rubber Foot | (4) |
| 31 | 06-81-0221 | M4 x 12mm Pan Wash. Hd. T-20 Screw | (4) |
| 32 | 06-81-0222 | M4 x 18mm Pan Hd. T-20 Screw | (20) |
| 33 | ----- | Control Panel | (1) |
| 34 | ----- | Power Button | (1) |
| 35 | ----- | Button | (1) |
| 38 | 14-20-0431 | PCBA with LCD | (1) |
| 39 | 06-81-0223 | M3 x 10mm Pan Hd. Phillips Screw | (7) |
| 40 | 06-81-0224 | M4 x 10mm Pan Hd. Phillips Screw | (2) |
| 41 | 31-12-0057 | Terminal Cap | (1) |
| 42 | 23-74-0023 | Battery Terminal Block | (1) |
| 43 | ----- | Rear Housing | (1) |
| 44 | 44-52-0107 | Motor Pad (Large) | (2) |
| 45 | 22-56-0206 | Close End Wire Connectors | (2) |
| 46 | 44-81-0018 | Battery Rail | (1) |
| 49 | ----- | Seal Ring | (2) |
| 50 | ----- | Hose Connector | (1) |
| 51 | ----- | Hose Clamp | (2) |
| 52 | ----- | Hose | (1) |
| 53 | ----- | Nozzle Adaptor | (1) |
| 54 | ----- | Inflating Needle | (1) |
| 55 | ----- | Inflating Nozzle | (1) |
| 56 | ----- | Hose Wrap | (1) |

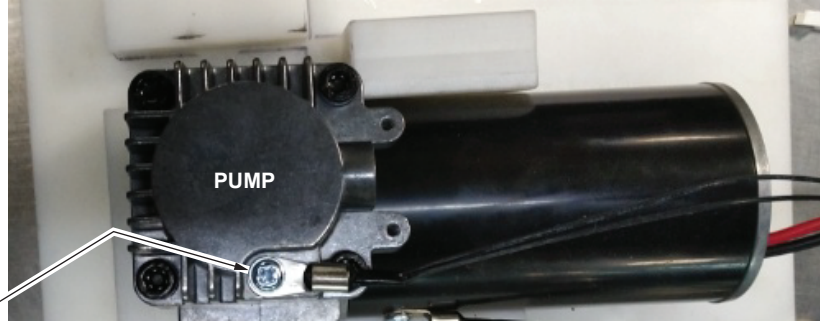
FIG. 70,71 NOTES
A clean, dry surface is essential for proper performance for any adhesive system. The area intended for application of any adhesive label or nameplate must be prepared by cleaning with isopropyl alcohol. Solvent is to be applied with a clean, lint free applicator and surface allowed to dry before applying the label or nameplate.

| FIG. | PART NO. | DESCRIPTION OF PART | NO. REQ. |
|------|------------|-------------------------------------|----------|
| 32 | (10x) | | |
| 32 | (2x) | | |
| 32 | (8x) | | |
| 30 | (4x) | | |
| 31 | (4x) | | |
| 57 | ----- | Hose Clip | (2) |
| 58 | ----- | Hose | (1) |
| 59 | ----- | 3-Way Connector | (1) |
| 60 | ----- | Hose Clamp | (1) |
| 61 | ----- | Hose | (1) |
| 62 | ----- | Hose Clamp | (1) |
| 63 | ----- | Connector | (1) |
| 64 | 43-44-0064 | Gasket | (1) |
| 65 | ----- | Air Tap | (1) |
| 70 | 12-20-0239 | Service Nameplate | (1) |
| 72 | 42-38-0148 | Foot/Screw Service Kit (Set of one) | (4) |
| 73 | 14-46-0331 | Inflating Attachment Kit | (1) |
| 74 | 14-46-0332 | Hose Wrap/Screw Service Kit | (1) |
| 75 | 14-34-0161 | Housing Service Kit | (1) |
| 80 | ----- | Motor/Pump Assembly | (1) |
| 81 | 14-46-0347 | Control Panel Service Kit | (1) |
| 82 | 14-37-0123 | Hose Assembly | (1) |

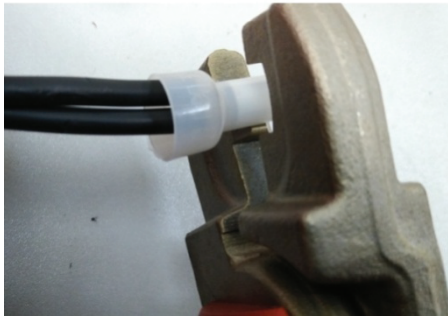
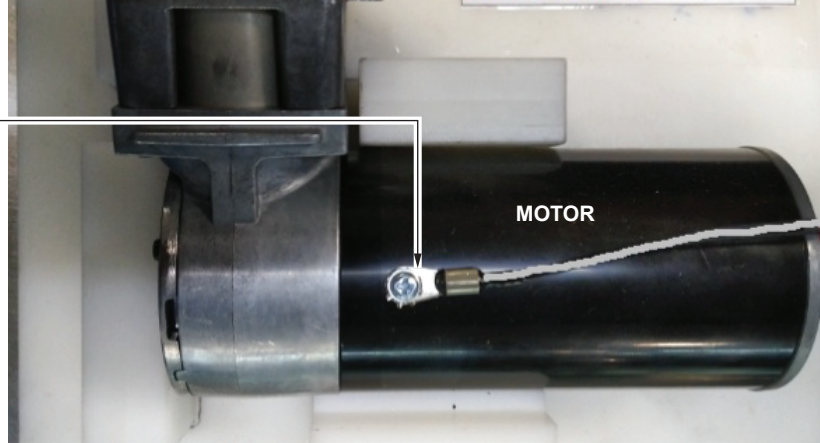
WIRING INSTRUCTIONS



Screw the NTC black wire to the pump.



Screw the NTC white wire to the motor.

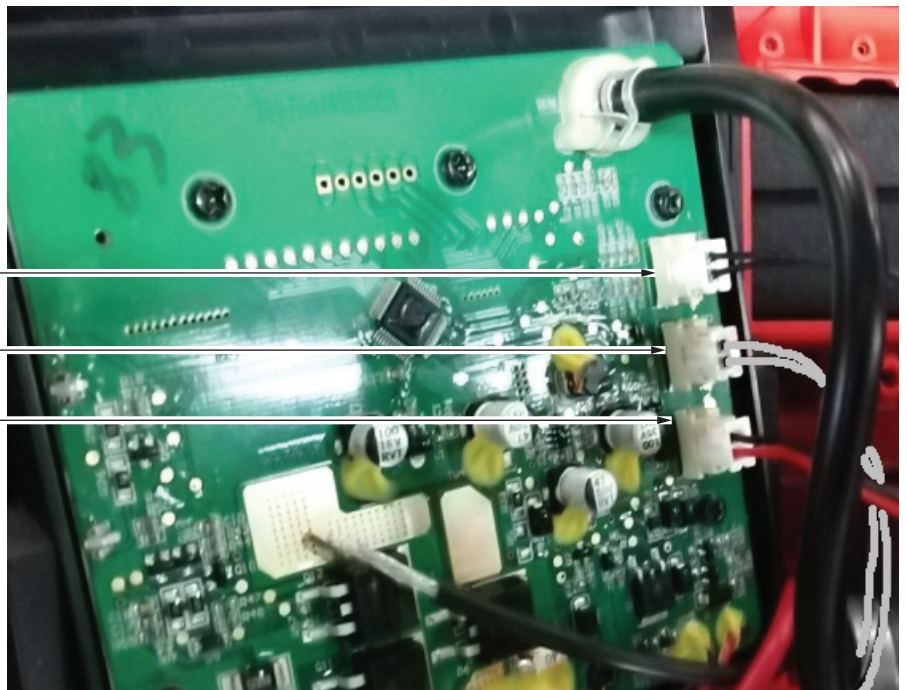


Crimp motor black wire and PCB black wire together using close end connector.
Crimp motor red wire and PCB red wire together using close end connector.

Insert the black NTC terminal into PCBA.

Insert the white NTC terminal into PCBA.

Insert the black and red fan terminal into the PCBA.



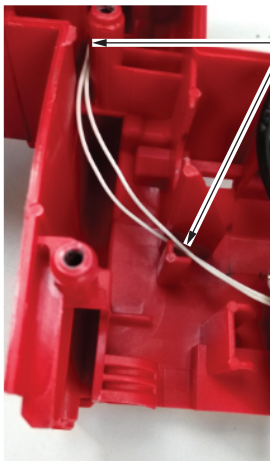
WIRING INSTRUCTIONS continued



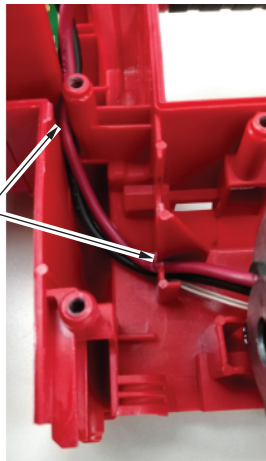
Place the black NTC wires into wire traps as shown.



Place the red and black fan wires into wire traps as shown.



Place the white NTC wires into wire traps as shown.



Place the red and black motor wires into wire traps as shown.

As an aid to reassembly, take notice of wire routings and position in wire guides and traps while dismantling tool.

Be sure that all components of electronics kit are seated firmly and squarely in housing recesses.

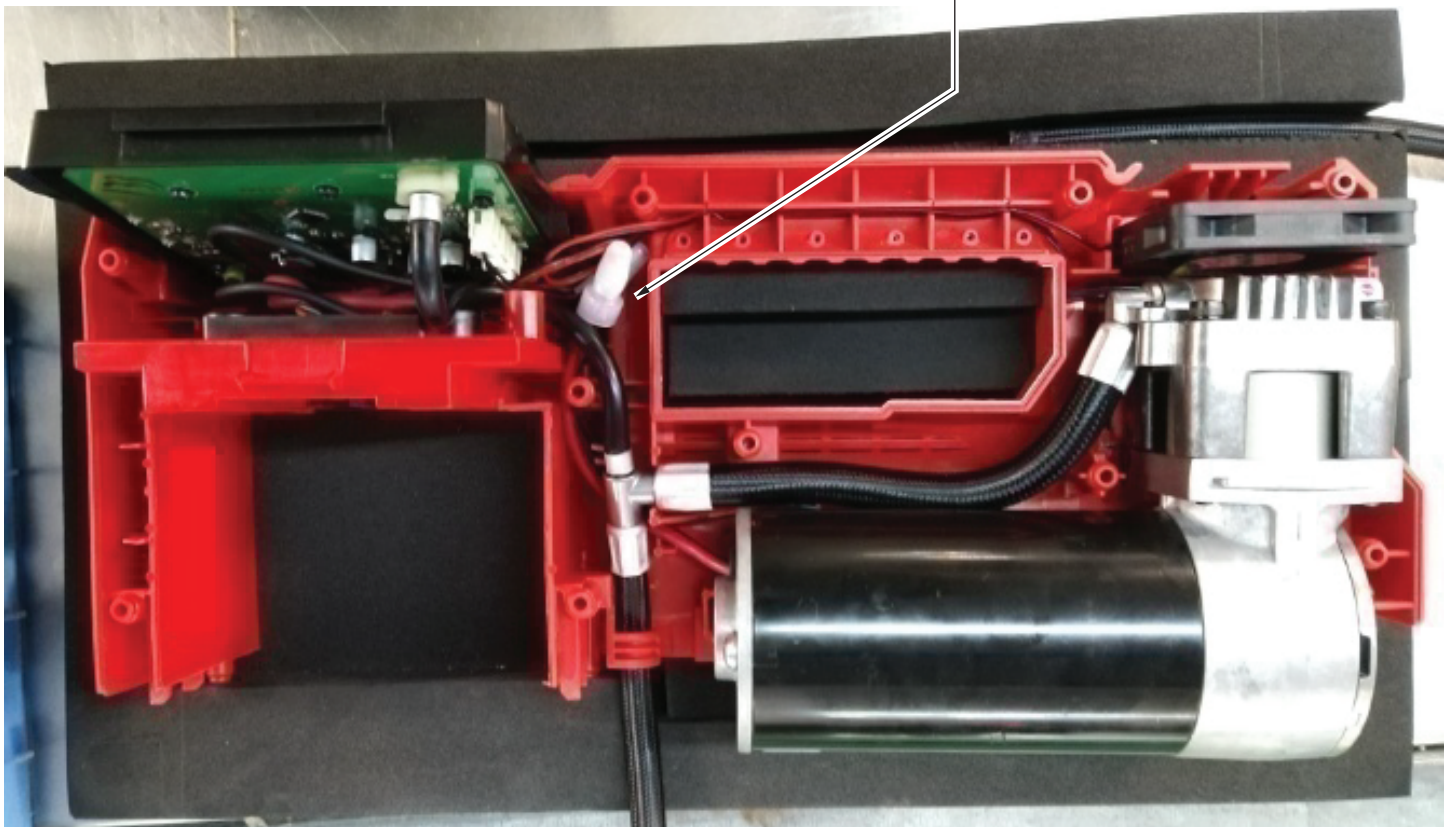
Avoid pinched wires, be sure that all wires and sleeves are pressed completely down in wire traps.

Prior to securing housing cover onto the housing support, be sure that there are no interferences.

Before installing the battery, check for proper functionality of shuttles and triggers.

Install battery and depress switch triggers to assure tool is operating properly.

Place close end connectors down into cavity area as shown.



SCREW TORQUE SPECIFICATIONS

| FIG. | PART NO. | DESCRIPTION OF FASTENER | WHERE USED | SEAT TORQUE | |
|------|------------|---------------------------------------|--|-------------|--------------|
| | | | | (N.m) | (IN/LBS) |
| 1 | 06-82-0269 | M3 x 10mm Pan Hd. T-10 Screw | Pump Head and Front Housing/Rear Housing | 0.35-0.55 | 3.097-4.867 |
| 5 | 06-81-0220 | M4 x 6mm Pan Wash. Hd. Phillips Screw | NTC and Cylinder Cap | 0.35-0.55 | 3.097-4.867 |
| 31 | 06-81-0221 | M4 x 12mm Pan Wash. Hd. T-20 Screw | Rubber Feet and Base | 0.1-0.3 | 0.885-2.655 |
| 32 | 06-81-0222 | M4 x 18mm Pan Hd. T-20 Screw | Base and Front Housing/Rear Housing | 0.5-0.8 | 4.425-7.080 |
| 32 | 06-81-0222 | M4 x 18mm Pan Hd. T-20 Screw | Front Housing and Rear Housing | 1.0-1.4 | 8.850-12.391 |
| 32 | 06-81-0222 | M4 x 18mm Pan Hd. T-20 Screw | Hose Wrap and Rear Housing | 0.75-0.95 | 6.637-8.407 |
| 39 | 06-81-0223 | M3 x 10mm Pan Hd. Phillips Screw | PCBA and Control Panel | 0.35-0.55 | 3.097-4.867 |
| 40 | 06-81-0224 | M4 x 10mm Pan Hd. Phillips Screw | Terminal Cap and Battery Rail | 0.75-0.95 | 6.637-8.407 |