



Lever oil pump

Owner's Manual



⚠ WARNING: Read carefully and understand all ASSEMBLY AND OPERATION INSTRUCTIONS before operating. Failure to follow the safety rules and other basic safety precautions may result in serious personal injury.

Item #108147

READ & SAVE THESE INSTRUCTIONS

Thank you very much for choosing an Ironton™ product!

For future reference, please complete the owner's record below:

Serial Number/Lot Date Code: _____

Purchase Date: _____

Save the receipt, warranty, and this manual. It is important that you read the entire manual to become familiar with this product before you begin using it.

This oil pump is designed for certain applications only. Northern Tool and Equipment is not responsible for issues arising from modification or improper use of this product such as an application for which it was not designed. We strongly recommend that this product not be modified and/or used for any application other than that for which it was designed.

For technical questions, please call **1-800-222-5381**.

Table of Contents

Intended Use.....4

Packaging Contents.....4

Technical Specifications4

Important Safety Information4

Specific Operation Warnings6

Main Parts of Pump.....6

Assembly Instructions.....6

Before Each Use.....7

Operating Instructions.....7

After Each Use.....7

Maintenance7

Troubleshooting.....8

Parts Diagram.....8

Parts List.....8

Replacement Parts9

Limited Warranty.....10

Intended Use

The Ironton Pump designed for transferring transmission, differentials & heavier oils.

Packaging Contents

- Hose with Adaptor, Clamp & Spout (1)
- Drum Cover (1)
- Pump tube assembly (1)
- User's Manual
- Lever Handle (1)

Technical Specifications

| Property | Specification |
|-------------------|---|
| Discharge Rate | Up to 60 ml (2.14 oz.) per stroke |
| Mechanism | Lever Action |
| Hose Length | 48" |
| Outlet Size | 1/4" NPT |
| Container Size | 25-50 lbs / 5 Gal / 20 Litres |
| Drum Cover Dia. | 12" (310 mm) |
| Pump Length | 18" (450 mm) |
| Wetted components | Steel, Aluminum, Zinc, Brass, NBR, PVC |
| Recommended use | Engine Oil, Transmission, differentials & heavier Oils |
| Do not use with | Chemicals, Acids, Water based fluids & other corrosive media etc. |

Important Safety Information

⚠WARNING

- Read and understand all instructions. Failure to follow all instructions may result in serious injury or property damage.
- The warnings, cautions, and instructions in this manual cannot cover all possible conditions or situations that could occur. Exercise common sense and caution when using this tool. Always be aware of the environment and ensure that the tool is used in a safe and responsible manner.
- Do not allow persons to operate or assemble the product until they have read this manual and have developed a thorough understanding of how it works.
- Do not modify this product in any way. Unauthorized modification may impair the function and/or safety and could affect the life of the product. There are specific applications for which the product was designed.
- Use the right tool for the job. DO NOT attempt to force small equipment to do the work of larger industrial equipment. There are certain applications for which this equipment was designed. This product will be safer and do a better job at the capacity for which it was intended. DO NOT use this equipment for a purpose for which it was not intended.
- Industrial or commercial applications must follow OSHA requirements.

⚠️WARNING

PROP 65

This product can expose you to chemicals including Lead, which is known to the State of California to cause cancer. For more information, go to www.P65Warnings.ca.gov.

⚠️WARNING

WORK AREA SAFETY

- Inspect the work area before each use. Keep work area clean, dry, free of clutter, and well-lit. Cluttered, wet, or dark work areas can result in injury. Using the product in confined work areas may put you dangerously close to cutting tools and rotating parts.
- Keep children and bystanders away from the work area while operating the tool. Do not allow children to handle the product.
- Be aware of all power lines, electrical circuits, water pipes, and other mechanical hazards in your work area. Some of these hazards may be hidden from your view and may cause personal injury and/or property damage if contacted.

⚠️WARNING

PERSONAL SAFETY

- Stay alert, watch what you are doing, and use common sense when operating the tool. Do not use the tool while you are tired or under the influence of drugs, alcohol, or medication. A moment of inattention while operating the tool may result in serious personal injury.
- Dress properly. Do not wear loose clothing, dangling objects, or jewelry. Keep your hair, clothing and gloves away from moving parts. Loose clothes, jewelry, or long hair can be caught in moving parts. Air vents on the tool often cover moving parts and should be avoided.
- Wear the proper personal protective equipment when necessary. Use ANSI Z87.1 compliant safety goggles (not safety glasses) with side shields, or when needed, a face shield. Use a dust mask in dusty work conditions. Also use non-skid safety shoes, hardhat, gloves, dust collection systems, and hearing protection when appropriate. This applies to all persons in the work area.
- Do not overreach. Keep proper footing and balance at all times.

⚠️CAUTION

PUMP USE AND CARE

- Do not force the pump. Products are safer and do a better job when used in the manner for which they are designed. Plan your work, and use the correct product for the job.
- Check for damaged parts before each use. Carefully check that the product will operate properly and perform its intended function. Replace damaged or worn parts immediately. Never operate the product with a damaged part.
- Store the product when it is not in use. Store it in a dry, secure place out of the reach of children.

Inspect the tool for good working condition prior to storage and before re-use.

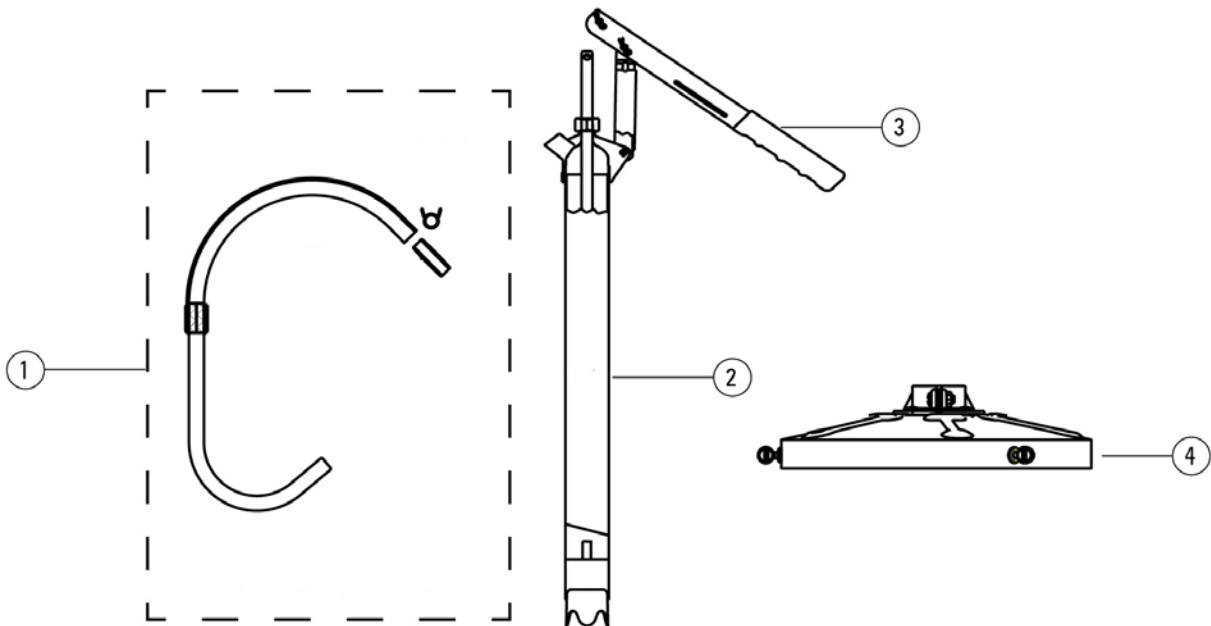
- If the pump is re-used after a long time, it may lose its prime & need re-priming.
- Use only accessories that are recommended by the manufacturer for use with your product. Accessories that may be suitable for one product may create a risk of injury when used with another tool. Never use an accessory that has a lower operating speed or operating pressure than the tool itself.

Specific Operation Warnings

⚠WARNING

- Do not use with Water based & other corrosive media.

Main Parts of Pump



Subassembly

1 Hose with Adaptor, Clamp & Steel Spout

2 Pump tube assembly

3 Lever Handle

4 Drum Cover

Assembly Instructions

1. Place the drum cover assembly over the container. Hand tighten the three thumb screws evenly onto the drum cover assembly to fix the drum cover firmly onto the container.
2. Pull the plunger rod of piston sub assembly up. Attach the lever handle to the piston rod using the pivot pin and retainer clip.

3. Push the pump tube assembly down through the die cast flange of the drum cover until the pump tube rests onto the base of the container. Ensure that the tube assembly touches the base of the container.
4. Tighten the machine screw and the hex nut in the flange assembly to hold the pump assembly firmly in place. Do not over tighten the screw and nut.
5. Screw the adapter onto the pump outlet. Do not over tighten. Use a thread sealant to prevent leakage.
6. Connect the hose assembly onto the outlet end of the adapter using clamp.
7. Pierce open a hole on the drum cover using a pin punch for holding the steel spout

Before Each Use

- Make sure that all connections are secure.

Operating Instructions

1. Take an empty container & place it below the steel spout. Start the pump by moving the lever handle. The pump will be primed in a few strokes. If there is any difficulty in Priming, put some oil in the pump outlet and keep operating the lever handle until the discharge begins.
2. The pump is now ready to use.
3. Once the pumping is completed, it is advised to place the hose assembly into the hole on the drum cover.

After Each Use

Keep the pump clean and in good working order for the best and safest performance.

Maintenance

⚠WARNING

- Drain the pump completely before changing accessories, cleaning, or servicing.

Maintain the Pump by adopting a program of conscientious repair and maintenance in accordance with the following recommended procedures. It is recommended that the general condition of any tool be examined before it is used. Keep your tool in good repair. Keep handles dry, clean, and free from oil and grease. The following chart is based on a normal operation schedule.

The pump is designed to require minimal maintenance.

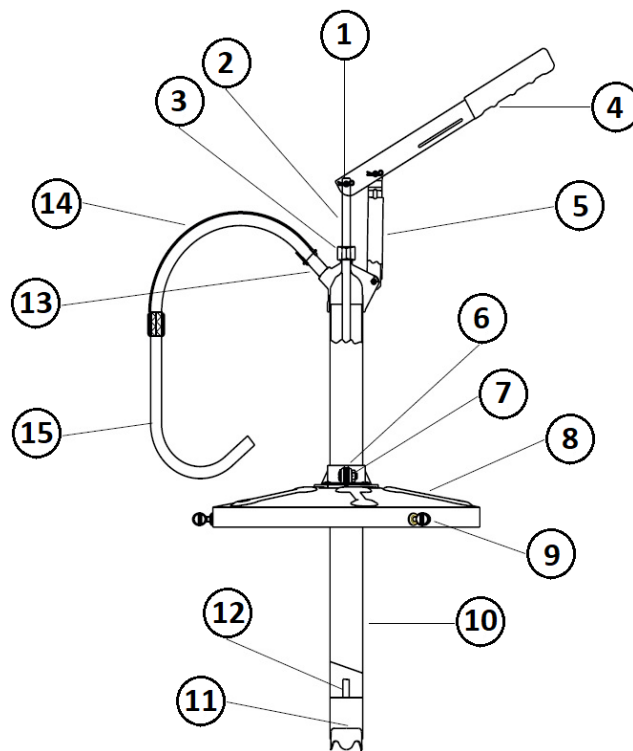
| Maintenance Interval | Maintenance Point |
|--|--|
| Daily before operating | Make sure that all connections are secure. |
| After the first 20 operating hours | |
| After the first 50 operating hours or every week | |

Troubleshooting

Use the table below to troubleshoot problems before contacting service personnel or your local dealer. If the problem continues after troubleshooting, call your local dealer for assistance.

| Failure | Possible Cause | Corrective Action |
|----------------------------------|------------------------------|--|
| Pump does not dispense the fluid | Pump fails to prime | Pour a few drops of the fluid being dispensed into the pump outlet. Start the pump by moving the lever with several quick strokes |
| | Blockage in the suction line | Remove the pump from the drum and ensure that suction tube & non-return valve is free of any blockage |

Parts Diagram



Parts List

| Part Number | Part Description | Quantity |
|-------------|-------------------------------|----------|
| 1 | Pivot Pin & Retainer Clip | 2 |
| 2 | Plunger Rod | 1 |
| 3 | Nut | 1 |
| 4 | Lever Handle with Rubber Grip | 1 |
| 5 | Connecting Lever | 1 |
| 6 | Flange | 1 |
| 7 | Machine Screw & Hex Nut | 1 |
| 8 | Drum Cover | 1 |
| 9 | Thumb Screw | 3 |
| 10 | Suction Tube | 1 |
| 11 | Non Return Valve | 1 |

| Part Number | Part Description | Quantity |
|--------------------|-------------------------|-----------------|
| 12 | Piston | 1 |
| 13 | Outlet Adapter | 1 |
| 14 | 48"/ 4' PVC Hose | 1 |
| 15 | Delivery Spout | 1 |

Replacement Parts

- For replacement parts and technical questions, please call Customer Service at **1-800-222-5381**.
- Not all product components are available for replacement. The illustrations provided are a convenient reference to the location and position of parts in the assembly sequence.
- When ordering parts, the following information will be required: item description, item model number, item serial number/item lot date code, and the replacement part reference number.
- The distributor reserves the rights to make design changes and improvements to product lines and manuals without notice.

Limited Warranty

Northern Tool and Equipment Company, Inc. ("We" or "Us") warrants to the original purchaser only ("You" or "Your") that the Ironton product purchased will be free from material defects in both materials and workmanship, normal wear and tear excepted, for a period of **90 days** from date of purchase. The foregoing warranty is valid only if the installation and use of the product is strictly in accordance with product instructions. There are no other warranties, express or implied, including the warranty of merchantability or fitness for a particular purpose. If the product does not comply with this limited warranty, Your sole and exclusive remedy is that We will, at our sole option and within a commercially reasonable time, either replace the product or product component without charge to You or refund the purchase price (less shipping). This limited warranty is not transferable.

Limitations on the Warranty

This limited warranty does not cover: (a) normal wear and tear; (b) damage through abuse, neglect, misuse, or as a result of any accident or in any other manner; (c) damage from misapplication, overloading, or improper installation; (d) improper maintenance and repair; and (e) product alteration in any manner by anyone other than Us, with the sole exception of alterations made pursuant to product instructions and in a workmanlike manner.

Obligations of Purchaser

You must retain Your product purchase receipt to verify date of purchase and that You are the original purchaser. To make a warranty claim, contact Us at 1-800-222-5381, identify the product by make and model number, and follow the claim instructions that will be provided. The product and the purchase receipt must be provided to Us in order to process Your warranty claim. Any returned product that is replaced or refunded by Us becomes our property. You will be responsible for return shipping costs or costs related to Your return visit to a retail store.

Remedy Limits

Product replacement or a refund of the purchase price is Your sole remedy under this limited warranty or any other warranty related to the product. We shall not be liable for: service or labor charges or damage to Your property incurred in removing or replacing the product; any damages, including, without limitation, damages to tangible personal property or personal injury, related to Your improper use, installation, or maintenance of the product or product component; or any indirect, incidental or consequential damages of any kind for any reason.

Assumption of Risk

You acknowledge and agree that any use of the product for any purpose other than the specified use(s) stated in the product instructions is at Your own risk.

Governing Law

This limited warranty gives You specific legal rights, and You also may have other rights which vary from state to state. Some states do not allow limitations or exclusions on implied warranties or incidental or consequential damages, so the above limitations may not apply to You. This limited warranty is governed by the laws of the State of Minnesota, without regard to rules pertaining to conflicts of law. The state courts located in Dakota County, Minnesota shall have exclusive jurisdiction for any disputes relating to this warranty.



Distributed by:
Northern Tool & Equipment Company, Inc.
Burnsville, Minnesota 55306
www.northerntool.com

Made in India