

Please read and save these instructions. Read carefully before attempting to assemble, install, operate or maintain the product described. Protect yourself and others by observing all safety information. Failure to comply with instructions could result in personal injury and/or property damage! Retain instructions for future reference.

Water Transfer Pumps

Description

These self-priming transfer pumps are designed to easily transfer water from one point to another.

Model 107791, 115 Volt Transfer Pump is great for household usage. Typical applications include removing water from waterbeds, clogged sinks, basements, etc.

Model 107794, 12 Volt Transfer Pump is convenient when normal power is not readily available. Typical applications include removing water from pool covers, clogged drains, stock tanks, water basins, boats, cisterns, etc. Note: Do NOT use 107791 in pool areas. The motors on both models 107791 and 107794 are non-submersible with overload protection.

Safety Guidelines

This manual contains information that is very important to know and understand. This information is provided for SAFETY and to PREVENT EQUIPMENT PROBLEMS. To help recognize this information, observe the following symbols.

⚠ DANGER *Danger indicates an imminently hazardous situation which, if not avoided, will result in death or serious injury.*

⚠ WARNING *Warning indicates a potentially hazardous situation which, if not avoided, could result in death or serious injury.*

⚠ CAUTION *Caution indicates a potentially hazardous situation which, if not avoided, may result in minor or moderate injury.*

⚠ NOTICE *Notice indicates important information, that if not followed, may cause damage to equipment.*

General Safety Information

⚠ DANGER *Do not submerge motor or allow motor to be exposed to water. Personal injury and/or death could result. Keep pump and power cords away from liquids. Model 107794 becomes very hot during operation.*

⚠ DANGER *Do not pump gasoline or other explosive liquids. Do not operate pump where flammable or explosive fumes or gases are present as a fire or explosion could result. Pump should only be used to pump clear water. Do not start pump or run pump dry.*

1. Read all instructions before operation.
2. Protect electrical cord from sharp objects, hot surfaces, oil and chemicals. Avoid kinking the cord and replace damaged cords immediately.

⚠ CAUTION *This pump has been evaluated for use with water only.*

Installation

Models 107791 and 107794 include a 6' suction hose, a water suction attachment, and a replacement parts kit which includes: impeller, gasket, shaft seal, and two motor brushes.

Models 107791 and 107794 can be used without the water suction attachment.

⚠ DANGER *Always Disconnect power source before attempting to install, service, or maintain the pump. Never handle a pump with wet hands or when standing on wet or damp surface or in water. Fatal electrical shock could occur.*

1. A ground fault circuit interrupter (GFCI) is required for Model 107791

⚠ WARNING

Risk of electrical shock! This



pump is supplied with a grounding conductor and grounding type attachment plug. A grounded receptacle in conformance with current NEC and local codes must be used (See Figure 1). Do not use model 107791, 115 V Transfer Pump in swimming pool areas.

2. Model 107791 operates on 115V only. Model 107794 operates on 12V DC only. Voltage of power supply must match the voltage of the pump. Model 107794 has color-coded battery clamps for 12V operation.
3. Use an extension cord only if necessary. Follow the Extension Cord Length Table at the bottom of the page for proper gage of 3-wire, grounding type extension cord.

⚠ WARNING

Risk of fatal electrical



shock. Never cut off the round grounding prong. Cutting the cord or plug will void the warranty and make the pump inoperable.

4. Use a strainer when pumping from a creek, pond, or source where foreign objects may be sucked into the pump. The strainer should prevent solids from entering the inlet line.
5. A regular garden hose may be used as a discharge line.
6. Pump operation will be seriously hindered or prevented if the inlet hose is over 15 feet long or if the vertical pumping distance exceeds 10 feet.

Installation (continued)

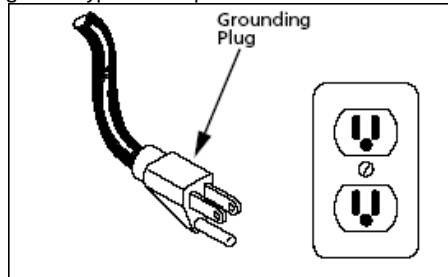
- At times, an overload due to over heating, low voltage, jammed impeller, etc. may shut the pump off. Unplug or turn off the pump and wait at least ten minutes. The pump will cool and automatically reset. (Model 107791 only)
- Motor should never be operated for more than 2 hours continuously. Critical heating can occur and might severely damage the pump and void warranty.

Operation

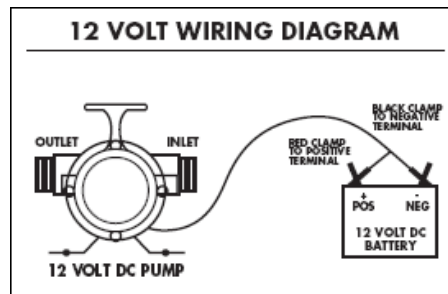
- Add 1 tablespoon of vegetable oil to both inlet and outlet to prime.
- Attach included 6' suction hose to inlet of pump. Attach garden hose to outlet of pump. There must be a gasket in place to insure that these connections are airtight, otherwise the pump will not prime. Connect water suction attachment to the open end of inlet hose and place below water surface. (Water suction attachment is optional for both 107791 and 107794 models.) The water suction attachment is designed to fit the male end of a garden hose. Place the water suction attachment as near as possible to the middle of the water that is to be pumped.
- Examine the inlet and outlet hoses to insure there are no blockages, kinks or bends. The inlet hose should be no longer than 15 feet and the vertical pumping distance should not be any higher than 10 feet.
- Connect pump to power source, with pump in a dry location. Model 107794: Motor must be connected to a fully charged automotive tractor or marine type battery to operate.

CAUTION Place switch in "OFF" position whenever connecting or disconnecting battery terminal clamps.

Connect the red clamp to the positive (+) type battery terminal.
Connect the black clamp to the negative (-) type battery terminal.
See 12V wiring diagram below (Figure 2).
Model 107791: Plug into a 3-prong ground-type AC receptacle.



(Figure 1)



(Figure 2)

Maintenance

DANGER Always disconnect power source before attempting to install, service, or maintain the pump.

IMPELLER REPLACEMENT

These parts are designed to handle most clear, nonflammable liquids with slight amounts of abrasives. When impeller vanes become worn from use, or damaged due to pumping abrasive liquids or trash, pump performance will be reduced or prevented altogether.

- Remove the four cover plate screws holding motor housing and pump housing together. Cover plate is now free and can be removed.

- Inspect gasket and impeller for wear and damage. If there is any evidence of wear or damage, replace the part(s).
- Lubricate new impeller with white grease or lightweight oil and reinstall by aligning flat on impeller hub with flat on motor shaft.
- Reassemble gasket, cover plate, and cover plate screws.

SHAFT SEAL REPLACEMENT

Motor shafts are sealed with factory pre-lubricated lip-type seals which are good for the life of the pump. If the seal leaks, it is usually because the pump has handled abrasive liquids. If the motor shaft is scored (deep grooves), the complete pump must be replaced.

- Remove and inspect impeller parts as specified in the impeller replacement instructions. Replace worn parts.
- Remove two pump body mounting screws and slide pump body from motor. Pry out seal retaining ring and push worn shaft seal from inside of pump body.
- Lubricate new seal with lightweight oil, push it into pump body with lip facing away from motor, and push in seal retaining ring.
- Reassemble pump body onto motor with mounting screws. Follow steps 3 and 4 in Impeller Replacement.

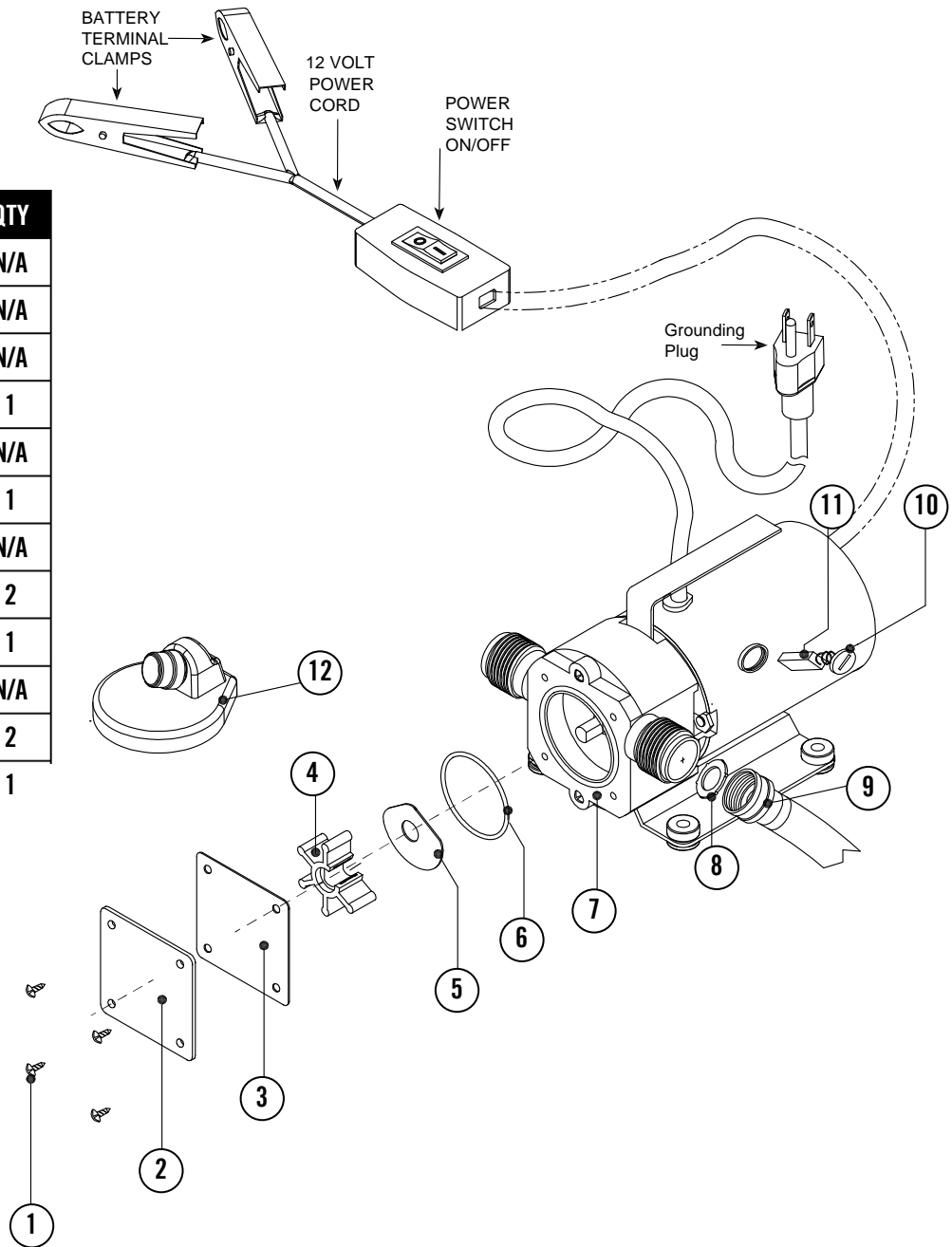
MOTOR BRUSH REPLACEMENT

NOTICE Brushes for this pump should be inspected after 75 hours of operation and replace if worn. They must be replaced every 150 hours of operation. Service one brush at a time.

- Disconnect pump from power supply.
- Remove brush caps with screwdriver.
- Remove old brush assembly.
- Insert new brush assembly.
- Replace brush caps.

Replacement Parts

NO	DESCRIPTION	QTY
1	SCREWS	N/A
2	IMPELLER COVER	N/A
3	GAP SPACER	N/A
4	IMPELLER	1
5	WASHER	N/A
6	O-RING	1
7	MOTOR SHAFT	N/A
8	WASHER	2
9	6 ft. Suction Hose	1
10	BRUSH CAP	N/A
11	BRUSH	2
12	Suction Scoop	1



Item #4 – Impeller (Qty. 2)

If no water is being pumped, but your pump is running, and you are using it properly, your impeller may possibly be worn or damaged. This can happen from running the pump dry or not using the suction strainer (debris enters pump and damages impeller).

- To replace, using a Phillips head screwdriver, remove the 4 screws (#1), remove the impeller cover (#2) and then remove the Gap Spacer (#3). Remove the damaged impeller (#4), and push the replacement onto the motor shaft (#7). Reattach the O-ring, impeller cover, and 4 screws.

Item #6 – O-ring (Qty. 1)

If you are noticing water leaking from the front of the pump, the O-ring may be worn.

- To replace, using a Phillips head screwdriver, remove the 4 screws (#1), and then remove the impeller cover (#2) and the Gap Spacer (#3). Remove the old O-ring (#5), and put in replacement. Reattach the impeller cover (#2) and the Gap Spacer (#3) and the 4 screws.

Item #11 – Brushes (Qty. 2)

Brushes help your motor to work properly. However, after extended usage, it is normal for brushes to need replacement (after approximately 150 hours of usage). If you don't replace the brushes when they become worn or dirty, your pump may not function to its fullest capability, and the life of the pump will be shortened.

- There are 2 brushes (#11), one on each side of the motor. Using a flathead screwdriver, remove the brush caps (#10), then pull out the brushes (#11). Either clean the brushes, or replace with the new brushes. Thread the brush caps back on and hand tighten.

Item #8 – Washer (Qty. 1)

If you are noticing water leaking from the clear hose connection at the pump inlet, check to make sure the washer (#8) is in place correctly. An airtight seal is needed at the inlet in order for the pump to work.

- If you are going to replace the washer, remove the old washer (#8) from the clear hose (#9), and replace it with the replacement washer. Always make sure to make a tight connection on the inlet.

Troubleshooting Chart

Symptom	Possible Cause(s)	Corrective Action
Pump will not start or run	<ol style="list-style-type: none"> 1. Blown fuse 2. Low line voltage 3. Worn brushes 4. Impeller blocked 5. Motor has overheated (Model 107791 only) 	<ol style="list-style-type: none"> 1. If blown, replace with proper sized fuse or reset breaker 2. Voltage of power supply must match the voltage of the pump 3. Replace brushes 4. Remove blockage 5. Disconnect from power supply and allow to cool (Min. 10 minutes)
Pump will not prime or retain prime after operating	<ol style="list-style-type: none"> 1. Air leak in suction line 2. Impeller blocked 3. Worn seal 4. Suction lift too high 5. Hose kinked or looped 6. Fittings not tight 7. Suction hose out of water 8. Clogged inlet 	<ol style="list-style-type: none"> 1. Repair suction line by tightening inlet connection or replace 2. Remove blockage 3. Replace seal 4. Lower pump 5. Straighten hose 6. Tighten fittings 7. Submerge suction hose end 8. Clean inlet
Flow rate is too low	<ol style="list-style-type: none"> 1. Inlet hose plugged or kinked 2. Low line voltage 	<ol style="list-style-type: none"> 1. Clean or replace 2. Voltage of power supply must match the voltage of the pump
Shaft seal leaks	<ol style="list-style-type: none"> 1. Worn seal 2. Shaft grooved 3. Pump head loose on motor 	<ol style="list-style-type: none"> 1. Replace seal 2. Replace pump 3. Insure proper assembly and no obstruction, tighten bolts

Limited Warranty

For one year from the date of purchase, IRONTON will repair or replace, at its option, for the original purchaser any part or parts of its Sump Pumps or Water Pumps ("Product") found upon examination by IRONTON to be defective in materials or workmanship. Please call IRONTON for instructions or see your dealer. Be prepared to provide the model number when exercising this warranty. All transportation charges on Products or parts submitted for repair or replacement must be paid by purchaser.

This Limited Warranty does not cover Products which have been damaged as a result of accident, abuse, misuse, neglect, improper installation, improper maintenance, or failure to operate in accordance with IRONTON's written instructions.

THERE IS NO OTHER EXPRESS WARRANTY. IMPLIED WARRANTIES, INCLUDING THOSE OF MERCHANTABILITY AND FITNESS FOR A PARTICULAR PURPOSE, ARE LIMITED TO ONE YEAR FROM THE DATE OF PURCHASE. THIS IS THE EXCLUSIVE REMEDY AND ANY LIABILITY FOR ANY AND ALL INDIRECT OR CONSEQUENTIAL DAMAGES OR EXPENSES WHATSOEVER IS EXCLUDED.

Some states do not allow limitations on how long an implied warranty lasts, or do not allow the exclusions or limitations of incidental or consequential damages, so the above limitations might not apply to you. This limited warranty gives you specific legal rights, and you may also have other legal rights which vary from state to state.

In no event, whether as a result of breach of contract warranty, tort (including negligence) or otherwise, shall IRONTON or its suppliers be liable for any special, consequential, incidental or penal damages including, but not limited to loss of profit or revenues, loss of use of the products or any associated equipment, damage to associated equipment, cost of capital, cost of substitute products, facilities, services or replacement power, downtime costs, or claims of buyer's customers for such damages.

You **MUST** retain your purchase receipt along with this form. In the event you need to exercise a warranty claim, you **MUST** send a **copy** of the purchase receipt along with the material or correspondence. Please call IRONTON for return authorization and instructions.