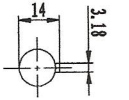
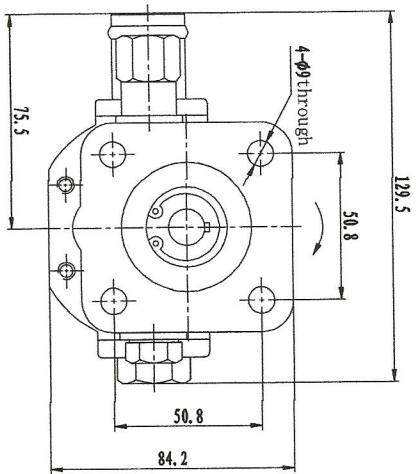
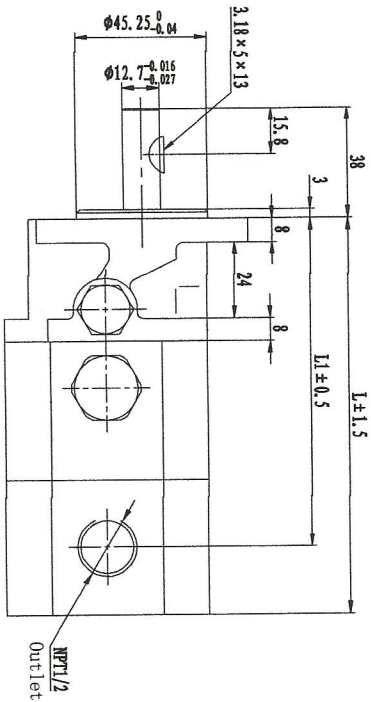
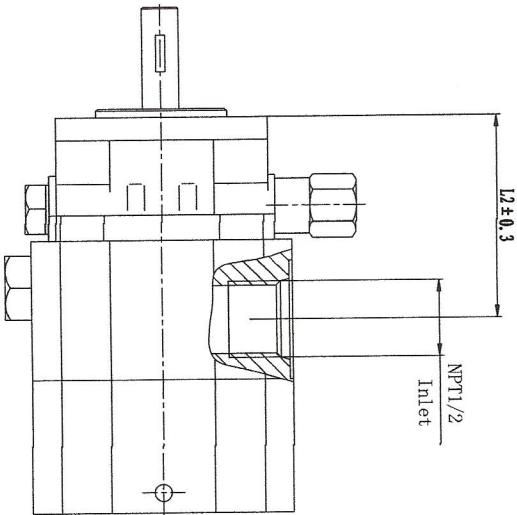


017-*/*-E-CB2

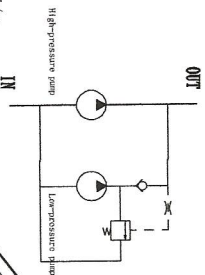
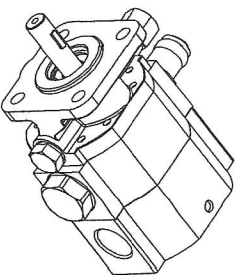


A-direction
NPT1/2
Inlet

2CB-E13/4.2-129	13	4.2	128	84.5	151.5
2CB-E13/2.1-129	13	2.1	120.5	84.5	144
2CB-E13/1.8-129	13	1.8	119.5	84.5	143
2CB-E10.9/4.2-129	10.9	4.2	121	71.5	144.5
2CB-E10.9/3.6-129	10.9	3.6	119	71.5	142.5
2CB-E10.9/2.1-129	10.9	2.1	117	71.5	140.5
2CB-E9.7/2.1-129	9.7	2.1	109.5	71.5	133
2CB-E8.8/4.2-129	8.8	4.2	113.5	70	137
2CB-E8.8/3.6-129	8.8	3.6	111.5	70	135
2CB-E8.8/3.0-129	8.8	3.0	109.5	70	133
2CB-E8.8/2.1-129	8.8	2.1	106	70	129.5
2CB-E8.8/1.8-129	8.8	1.8	105	68.5	131.5
2CB-E8.8/1.6-129	8.8	1.6	102.5	61	124
2CB-E6.3/3.6-129	6.3	3.6	102.5	61	124
2CB-E6.3/3.0-129	6.3	3.0	100.5	61	120.5
2CB-E6.3/2.1-129	6.3	2.1	97	61	119.5
2CB-E6.3/1.8-129	6.3	1.6	96	61	119.5
2CB-E4.2/2.1-129	4.2	2.1	89.5	58.3	113
2CB-E4.2/1.8-129	4.2	1.6	88.5	58.3	112



- Specification
1. Rate displacement: Front pump: *ml/r; Rear pump: *ml/r;
 2. Pressure: Rated pressure of front pump: 2.5MPa; Front pump load pressure: 2-3.5MPa;
 3. Speed: 3600r/min;
 4. Rotation: CW;
 5. Material: Front and rear cover: cast iron, pump body and transitional cover material: cast iron, seals: NBR;
 6. Test medium: 32# hydraulic oil;
 7. All port are blocking by plug.



* 107689

底图总号	2CB-E8.8/3.0-129	8.5	3.0	108	68.5	131.5
图幅	2CB-E6.3/3.0-129	6.3	3.0	100.5	61	124
日期	2CB-E6.3/2.1-129	6.3	2.1	97	61	120.5
图号	2CB-E6.3/1.8-129	6.3	1.6	96	61	119.5
型号	2CB-E4.2/2.1-129	4.2	2.1	89.5	58.3	113
	2CB-E4.2/1.8-129	4.2	1.6	88.5	58.3	112

标记	次数	分区	更改文件号	签名	日期
设计	周凡		标准化		
审核	裴海君				
工艺			批准	陈国超	2021.06.14

Outline

Log splitter pumps

2CB-E*/*-L10

版本号 V01

共 1 页 第 1 页