

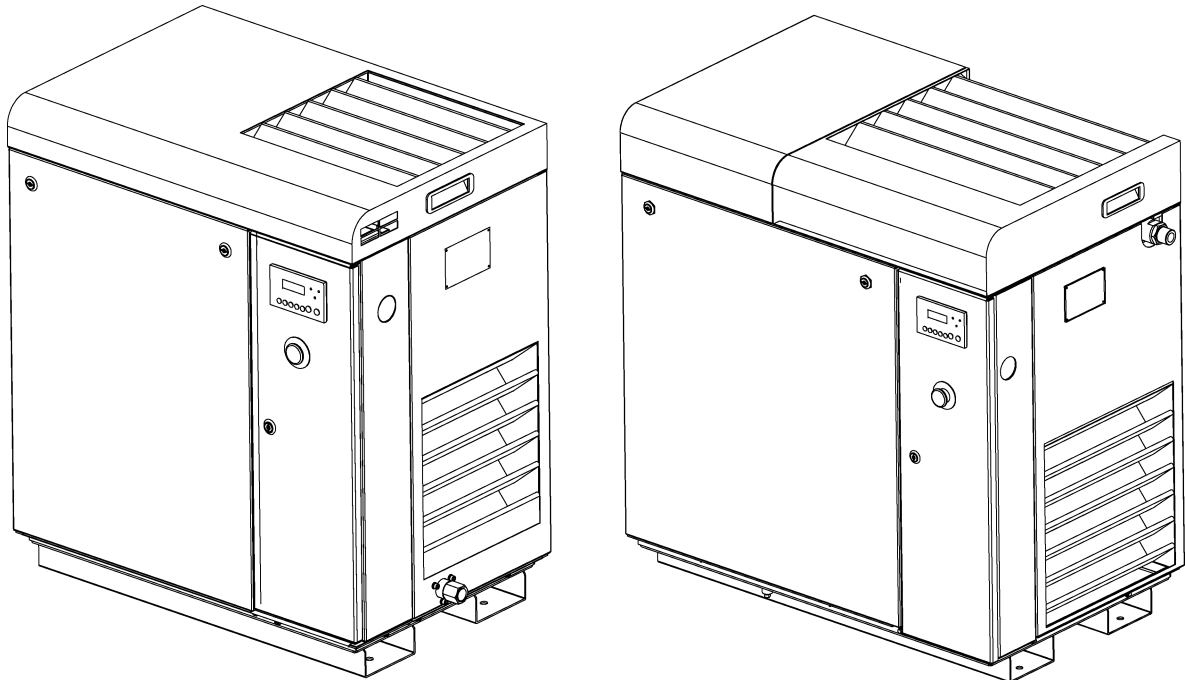


## PARTS LIST MANUAL

# ShopTek™

## ST4, ST5, ST7, ST11, ST15

4 – 15 kW (5 – 20 hp)  
Three-phase 60 Hz



### ⚠ SAFETY WARNING

Users are required to read the entire User Manual before handling or using the product. Keep the User Manual in a safe place for future reference.

### WARRANTY NOTICE

Failure to follow the instructions and procedures in this manual, or misuse of this equipment, will void its warranty.

PART NUMBER:  
**88290218-237 R01**

The information in this manual is current as of its publication date and applies to compressor models indicated on this cover with **serial number:**

**37218080148**

and all subsequent serial numbers until next revision of this manual or release of a replacement manual.

Publication date: 01/25/2019

Copyright © 2019 Sullair, LLC. All rights reserved.



## **Service Training Courses**

Sullair training courses provide hands-on and classroom instruction for the proper operation, maintenance, and servicing of Sullair products. Individual courses on Stationary compressors, variable speed drives, compressor electrical systems, and dryers are offered at regular intervals throughout the year at Sullair's training facility located in Michigan City, Indiana.

Instruction includes training on the function and installation of Sullair service parts, troubleshooting common faults and malfunctions, and actual equipment operation. These courses are recommended for distributor service personnel. There is also a basic Stationary compressor course available for end-users.

For details on course offerings, outlines, schedules, and cost information contact:

### **Sullair Training Department**

1-888-SULLAIR or  
219-879-5451 (ext. 5623)  
training@sullair.com  
www.SullairTraining.com

- Or Write -

**Sullair**  
1 Sullair Way  
Michigan City, IN 46360  
Attn: Training Department



# Table of Contents

1.1	Procedure for ordering parts .....	5	1.15	Enclosure—ST4, ST5, ST7 .....	40
1.2	Recommended spare parts list .....	6	1.16	Enclosure—ST11, ST15 .....	42
1.3	Motor, compressor, frame and drive—ST4, ST5, ST7 .....	8	1.17	Control assembly—ST4, ST5, ST7 .....	44
1.4	Motor, compressor, frame and drive—ST11, ST15 .....	12	1.18	Control assembly—ST11, ST15.....	48
1.5	Air inlet system—ST4, ST5, ST7 .....	16	1.19	Starter assembly—ST4, ST5, ST7, ST11, ST15 (208V/ 230V/460V) .....	50
1.6	Air inlet system—ST11, ST15.....	18	1.20	Starter assembly—ST4, ST5, ST7, ST11, ST15 (575V) .	54
1.7	Discharge system—ST4, ST5, ST7 .....	20	1.21	Tank mount package without dryer—ST4, ST5, ST7 .....	56
1.8	Discharge system—ST11, ST15.....	22	1.22	Tank mount package without dryer—ST11, ST15 .....	58
1.9	Fluid piping—ST4, ST5, ST7 .....	24	1.23	Tank mount package with dryer—ST4, ST5, ST7 .....	60
1.10	Fluid piping—ST11, ST15.....	26	1.24	Tank mount package with dryer—ST11, ST15 .....	62
1.11	Cooling system—ST4, ST5, ST7 .....	28	1.25	Dryer option (SRHT20/30/40)—ST4, ST5, ST7 .....	64
1.12	Cooling system—ST11, ST15.....	30	1.26	Dryer option (FX65F/SRT60/80)—ST11, ST15 .....	66
1.13	Separator tube and piping—ST4, ST5, ST7 .....	32	1.27	Decal location, base machine—ST4, ST5, ST7 .....	68
1.14	Separator tank and tube—ST11, ST15.....	36	1.28	Decal location, base machine—ST11, ST15 .....	70

**Notes:**



## 1.2 Recommended spare parts list

Part number	Qty	Description	Notes
88290014-484	1	element, fluid filter	
88290014-485	1	element, air filter	ST11, ST15
88290014-486	1	element, air filter	ST4, ST5, ST7
88290015-567	1	element, separator	ST11, ST15
88290015-049	1	element, separator	ST4, ST5, ST7
02250050-612	1	kit, repair for minimum pressure/check valve	
02250144-327	1	kit, repair for thermal valve (195°F) 02250092-081	
02250144-326	1	kit, repair for thermal valve (185°F) 02250078-204	
88290015-219	1	solenoid valve	
88290015-890	1	Filter, scavenge line	
88290015-902	3	belt, 1120mm	ST11, ST1512
88290017-056	3	belt, 1212mm	ST1508, ST1509, ST1513
88290015-901	2	belt, 1180mm	ST7
88290016-410	2	belt, 1087mm	ST4, ST5
02250176-967	1	Kit, inlet valve repair	ST4, ST5, ST7
02250176-856	1	Kit, inlet valve repair	ST11, ST15
02250181-735	1	Kit, hose replacement	ST4, ST5, ST7
02250181-736	1	Kit, hose replacement	ST11, ST15
02250176-968	1	Kit, Inlet valve rebuild	ST4, ST5, ST7
02250180-402	1	Kit, Inlet valve rebuild	ST11, ST15
02250179-875	1	Kit, Shaft seal replacement	ST4, ST5, ST7
02250069-073	1	Kit, Shaft seal replacement	ST11, ST15
02250181-451	1	Kit, wear sleeve replacement	ST4, ST5, ST7
02250181-410	1	Kit, tool, inlet valve removal/replacement	ST4, ST5, ST7
02250181-413	1	Kit, tool, wear sleeve removal	ST4, ST5, ST7
02250181-415	1	Kit, tool, wear sleeve installation	ST4, ST5, ST7

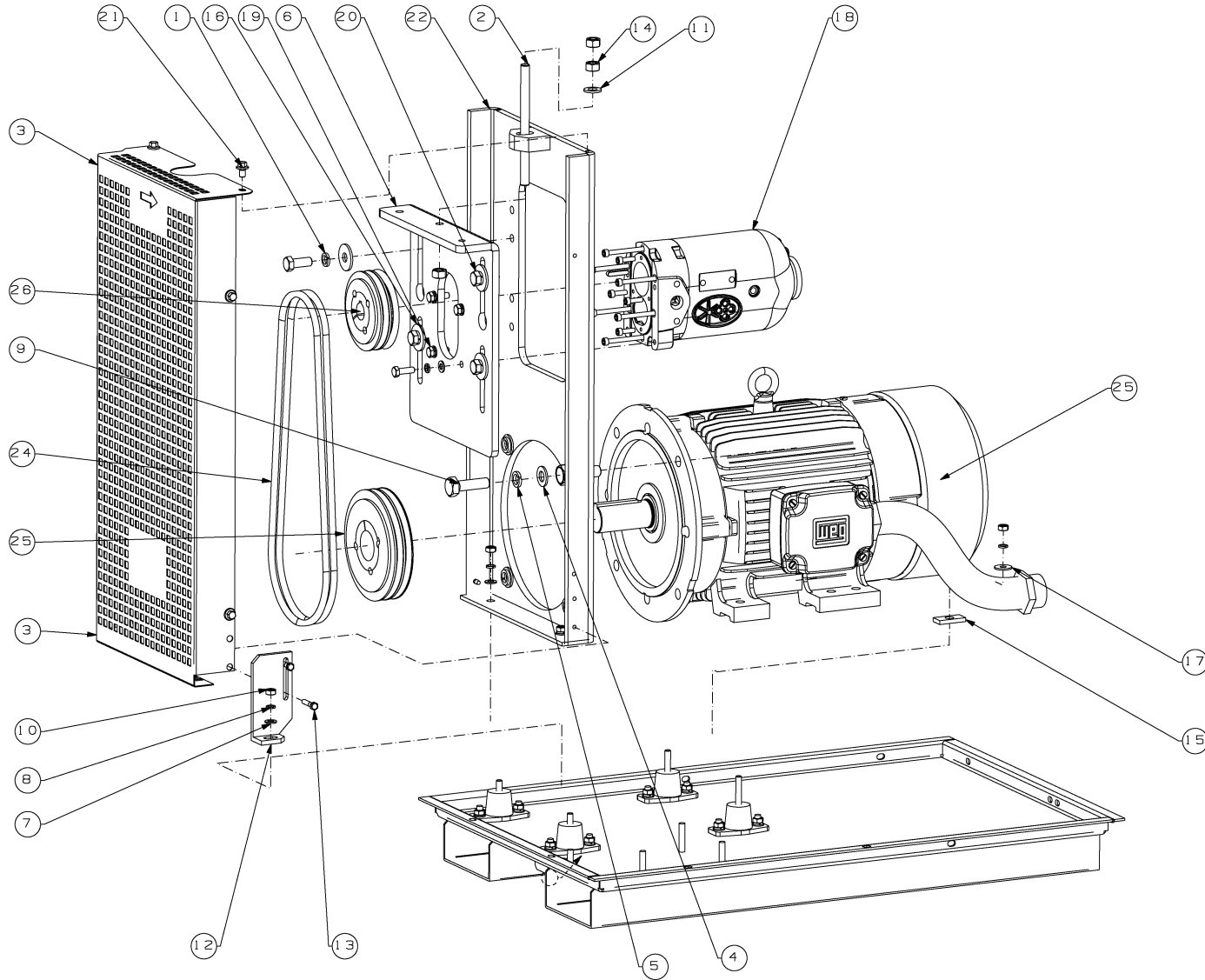
(I) For proper amount of fluid fill, please consult Lubrication Guide in User's Manual Section 3, Specifications.

## 1.2 Recommended spare parts list

Part number	Qty	Description	Notes
02250181-416	1	Kit, tool, shaft seal replacement	ST4, ST5, ST7
02250069-072	1	Kit, tool, shaft seal replacement	ST11, ST15
02250175-739	1	Kit, maintenance	ST4, ST5
02250175-740	1	Kit, maintenance	ST7
02250175-741	1	Kit, maintenance	ST11, ST1512
02250175-743	1	Kit, maintenance	ST1508, ST1509, ST1513
88292017-757	1	Kit, conv 230V to 460V	
88292017-723	1	Kit, conv ST709 to ST712	ST709
88292017-725	1	Kit, conv ST1109 to ST1112	ST1109
88292017-726	1	Kit, conv ST1509 to ST1512	ST1509
88290018-640	1	Kit, controller replacement	
02250184-776	1	Key, enclosure	
02250180-260	1	Fluid, Sullube® (5 liters)	(I)
250022-669	1	Fluid, Sullube® (5 gallons)	(I)
250022-670	1	Fluid, Sullube® (55 gallons)	(I)

(I) For proper amount of fluid fill, please consult Lubrication Guide in User's Manual Section 3, Specifications.

1.3 Motor, compressor, frame and drive—ST4, ST5, ST7



88292030-784 R00



88292018-237 R01  
Subject to EAR, ECCN EAR99 and related export control restrictions.

**1.3 Motor, compressor, frame and drive—ST4, ST5, ST7**

Key	Part number	Qty	Description	Notes
1	88832112-031	4	WASHER,SPRG 12 GB93-87 GAVSSAI	12
2	88290014-446	1	SCRW,M12X170 4.8 GRADE	
3	88290015-786	1	GD,AIREND/MOTOR WS4/5/7	
4	88831114-025	4	WASHER,14 GB97.1-85 GAV SSAI	14
5	88832114-036	4	WASHER,SPRG 14 GB93-87 GAVSSAI	14
6	88290016-246	1	PLT,COMPR MOUNTING VIPER6	
7	88831108-016	7	WASHER,8 GB97.1-85 GAV SSAI	8
8	88832108-021	9	WASHER,SPRG 8 GB93-87 GAV SSAI	8
9	88812114-050	4	SCREW M14X50 GB5783 GAV SSAI	M14X50
10	88821108-068	5	NUT,M8 GB6170-86 GAV SSAI	M8
11	88831112-025	1	WASHER,12 GB97.1-85 GAV SSAI	12
12	88290016-209	1	SUPT,BRKT WS4/5/7	
13	88811106-030	2	SCREW,M6X30 GB5782-86GAV SSAI	
14	88821112-108	3	NUT,M12 GB6170-86 GAV SSAI	
15	88290017-099	2	WSHR,PLAIN 40X23X5.5	
16	88833112-033	4	WSHR,BIG12 GB96-85 SSAI	
17	88833108-022	2	WSHR,BIG8 GB96-85 SSAI	
18	02250171-669	1	COMPR&PART,DXX063140A10ME50AB	
19	88812108-025	4	SCREW,M8X25 GB5783 GAV SSAI	
20	88812112-030	4	SCREW,M12X30 GB5783 GAV SSAI	
21	88813108-012	4	SCREW,M8X12 GB5787-86 SSAI	
22	88290016-256	1	PLT,AIREND/MTR MTG WS4	
	88290016-210	1	PLT,AIREND/MTR MTG WS5/7	
23	88292031-309	1	FRM BSE,WS04-07 4KW ASME	ST4
	88292031-310	1	FRM BSE,WS04-07 5KW/7KW ASME	ST5/7

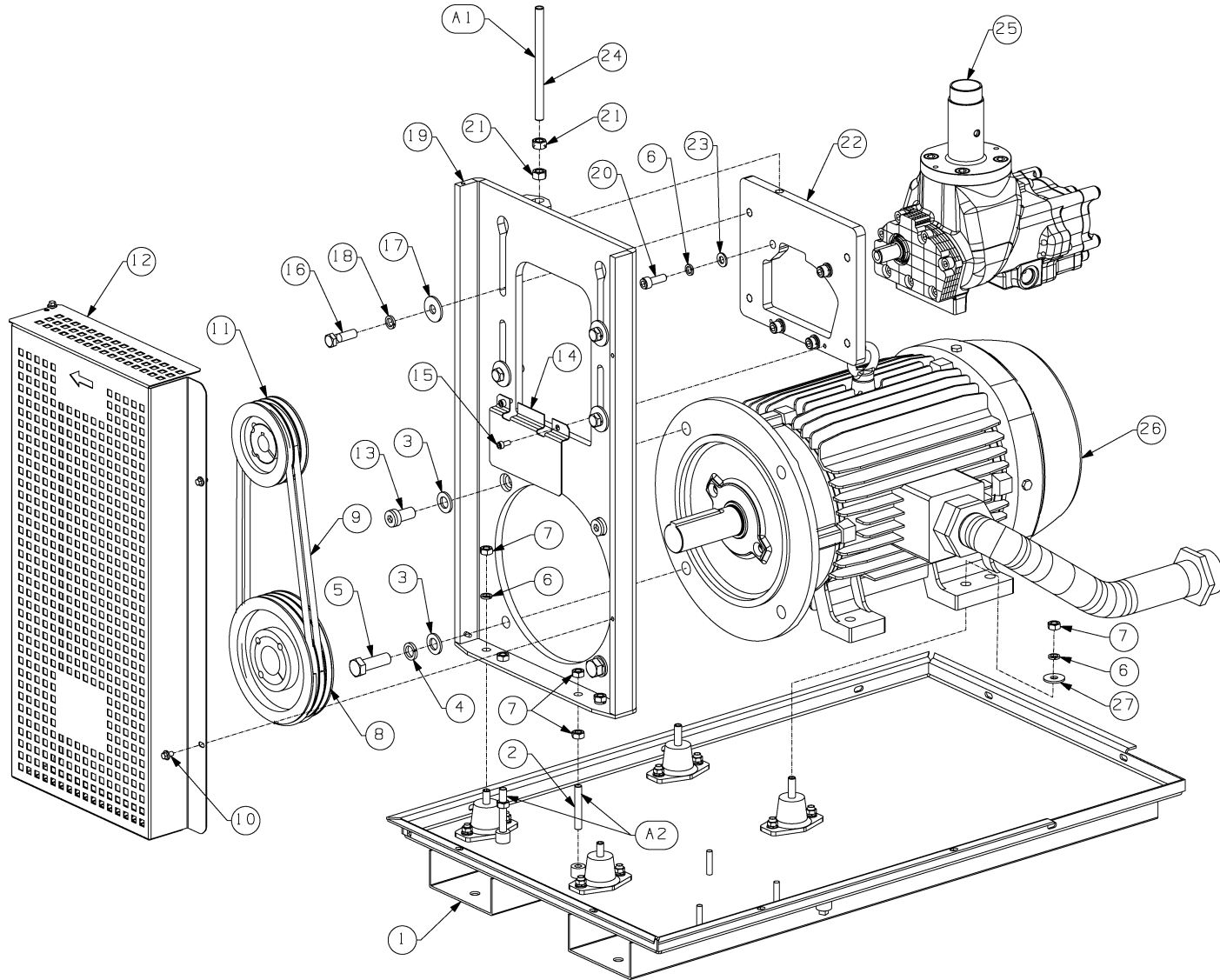
**1.3 Motor, compressor, frame and drive—ST4, ST5, ST7**

Key	Part number	Qty	Description	Notes
24	88290016-410	2	BELT,1087 XPZ OBTL X-POWER+	ST4/5
	88290015-901	2	BELT,XPZ1180 OBLT X-POWER+	ST7
25	View Table 1	1	PUL,SPZ 224X2 W/T BSHG BD 38+	
26	View Table 1	1	PUL,SPZ 80X2 W/T BSHG BD 22+	
27	View Table 2	1	MTR,5-10HP	

MODEL		TT MINI	OPTILINK			
		INITIAL	REFASTEN	INITIAL	REFASTEN	
		HZ	HZ	N	N	
WS0408	50HZ	86	75.4	234	180	
WS0410	50HZ	82	71.9	232	178	
WS0413	50HZ	79.6	69.8	234	180	
WS0508	50HZ	93	81.5	229	176	
WS0510	50HZ	84.2	73.8	215	165	
WS0513	50HZ	88.5	77.6	236	181	
WS0708	50HZ	89.8	78.7	237	182	
WS0710	50HZ	85.4	74.9	230	177	
WS0713	50HZ	85.4	79.3	230	191	
WS0710	60HZ	89	78.1	258	198	
WS0510	60HZ	77.9	68.4	214	165	
WS0709	60HZ	86.8	76.1	250	192	
WS0509	60HZ	91	79.8	241	185	
WS0512	60HZ	76.6	67.2	215	165	
WS0412	60HZ	81.6	71.6	240	184	
WS0410	60HZ	79.5	69.7	232	180	
WS0712	60HZ	81.1	71.1	242	186	

**Notes:**

1.4 Motor, compressor, frame and drive—ST11, ST15



88292004-721 R02



88292018-237 R01  
Subject to EAR, ECCN EAR99 and related export control restrictions.

**1.4 Motor, compressor, frame and drive—ST11, ST15**

Key	Part number	Qty	Description	Notes
1	88292020-834	1	Base	
2	88290017-959	2	Screw	
3	88831116-030	4	Flat Washer	
4	88832116-041	2	Spring Gasket	
5	88812116-050	2	Bolt	
6	88832110-026	7	Spring Gasket	
7	88821110-084	7	Nut	
8	88290017-082	1	Motor Pulley Assembly	60Hz ST11 9bar
	88290017-080	1		60Hz ST11 10bar
	88290017-077	1		60Hz ST11 12bar
	88290017-090	1		60Hz ST15 9/10bar
	88290017-087	1		60Hz ST15 12bar
9	88290015-902	3	Belt	60Hz ST11 9/10/12bar / ST15 12bar
	88290017-056	3		60Hz ST15 9/10bar
10	88813106-010	3	Flange Bolt	
11	88290017-070	1	Air End Pulley Assembly	60Hz ST11 9bar
	88290017-073	1		60Hz ST11 10/12bar / ST15 10bar
	88290017-072	1		60Hz ST15 9bar
	88290017-075	1		60Hz ST15 12bar
12	88290014-269	1	Guard	
13	88290016-975	2	Socket head cap screw	
14	88290016-323	1	Cover Plate of Air End	
15	88818206-014	2	Socket head cap screw	
16	88811112-040	4	Bolt	
17	88833112-033	4	Large Flat Washer	
18	88832112-031	4	Spring Gasket	
19	88290014-212	1	Air End Installation Plate	

**1.4 Motor, compressor, frame and drive—ST11, ST15**

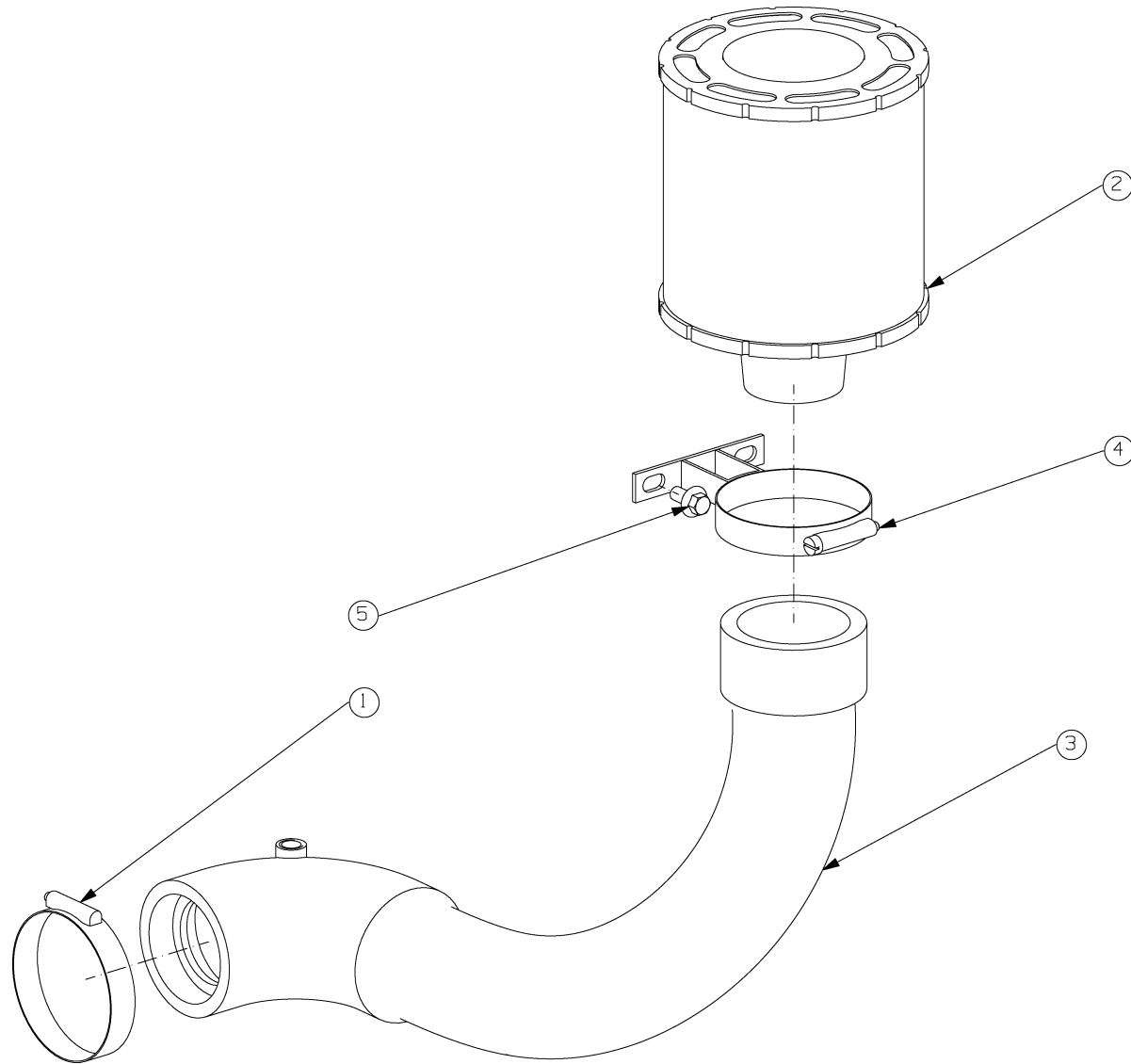
Key	Part number	Qty	Description	Notes
20	88818210-030	4	Socket head cap screw	
21	88821112-108	2	Nut	
22	88290014-211	1	Cover Plate of Air End	
23	88831110-020	4	Flat Washer	
24	88290014-446	1	Screw	
25	88290015-893	1	Air End	
26	88292015-451	1	Motor	60Hz ST11 208-230/460V
	88292015-452	1		60Hz ST15 208-230/460V
27	88833110-027	1	Large Flat Washer	

**Drawing notes**

A1	APPLY LOCTITE 242
A2	FOR SHIPMENT ONLY

**Notes:**

### 1.5 Air inlet system—ST4, ST5, ST7

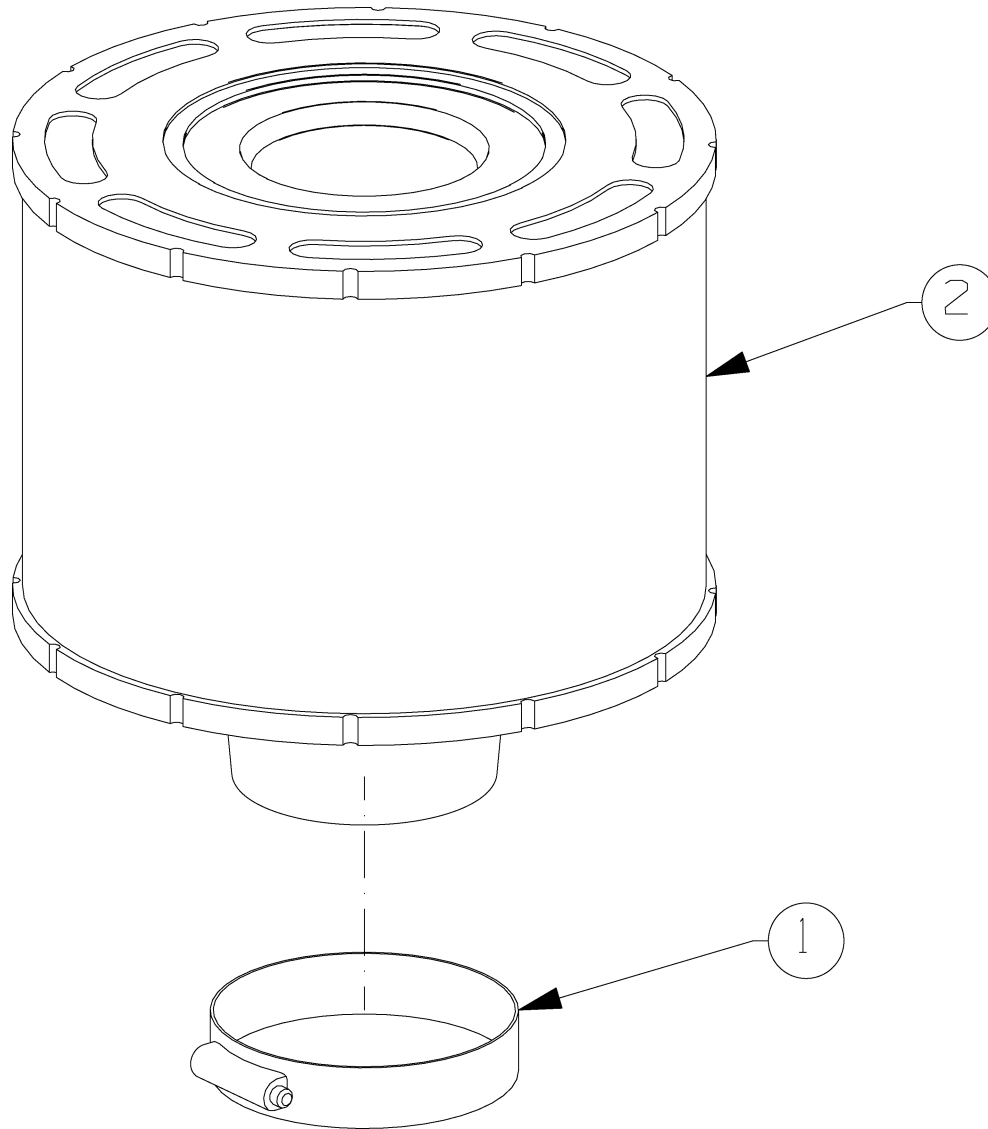


88291004-368 R00

**1.5 Air inlet system—ST4, ST5, ST7**

Key	Part number	Qty	Description	Notes
1	88290004-734	1	Clamp	
2	88290014-486	1	Air Filter	
3	88290015-909	1	Hose	
4	88290016-918	1	Clamp	
5	88813106-012	2	Flange Bolt	

## 1.6 Air inlet system—ST11, ST15

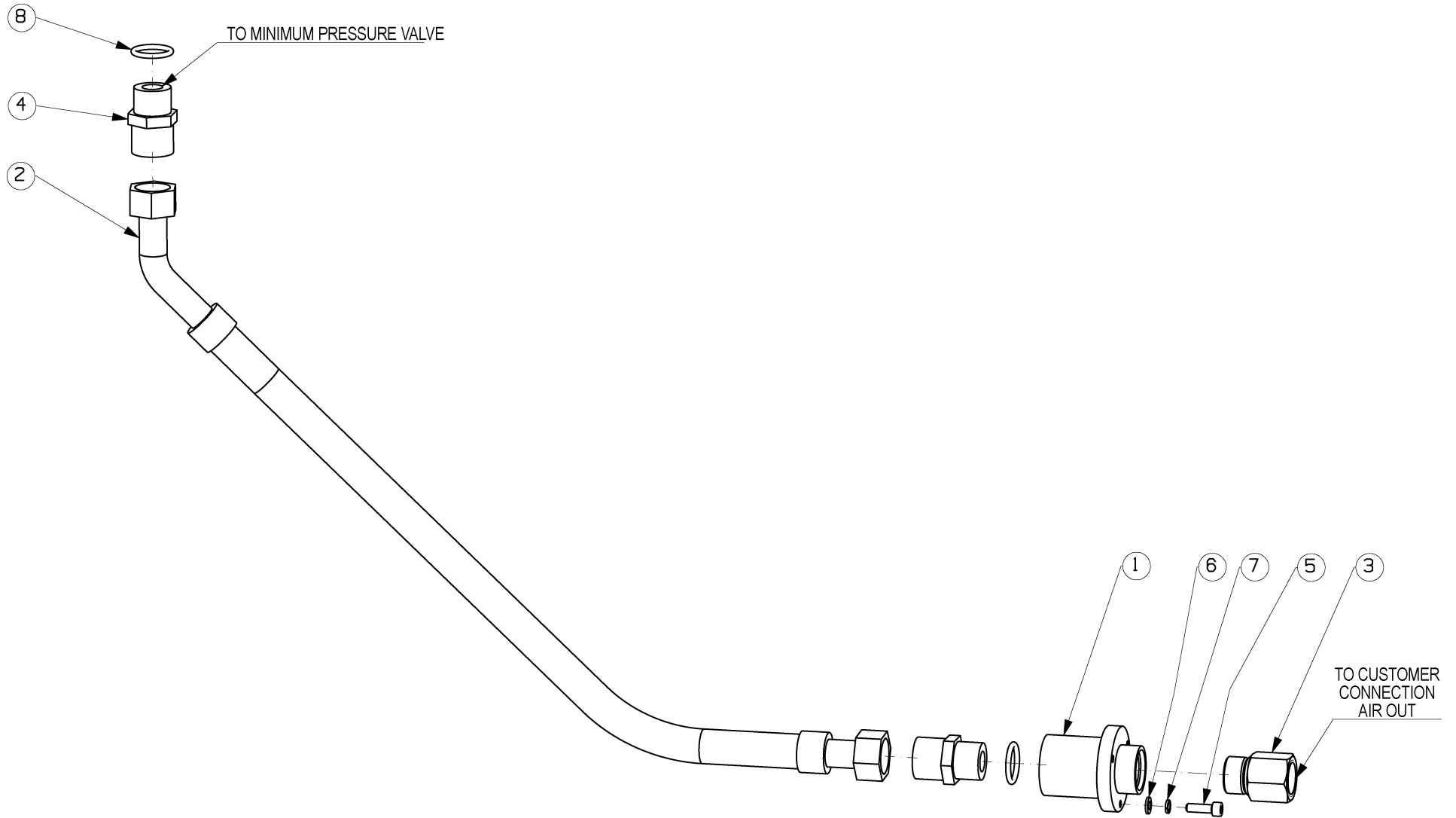


88291004-332 R00

**1.6 Air inlet system—ST11, ST15**

Key	Part number	Qty	Description	Notes
1	88290004-733	1	Clamp	
2	88290014-485	1	Air Filter	

### 1.7 Discharge system—ST4, ST5, ST7

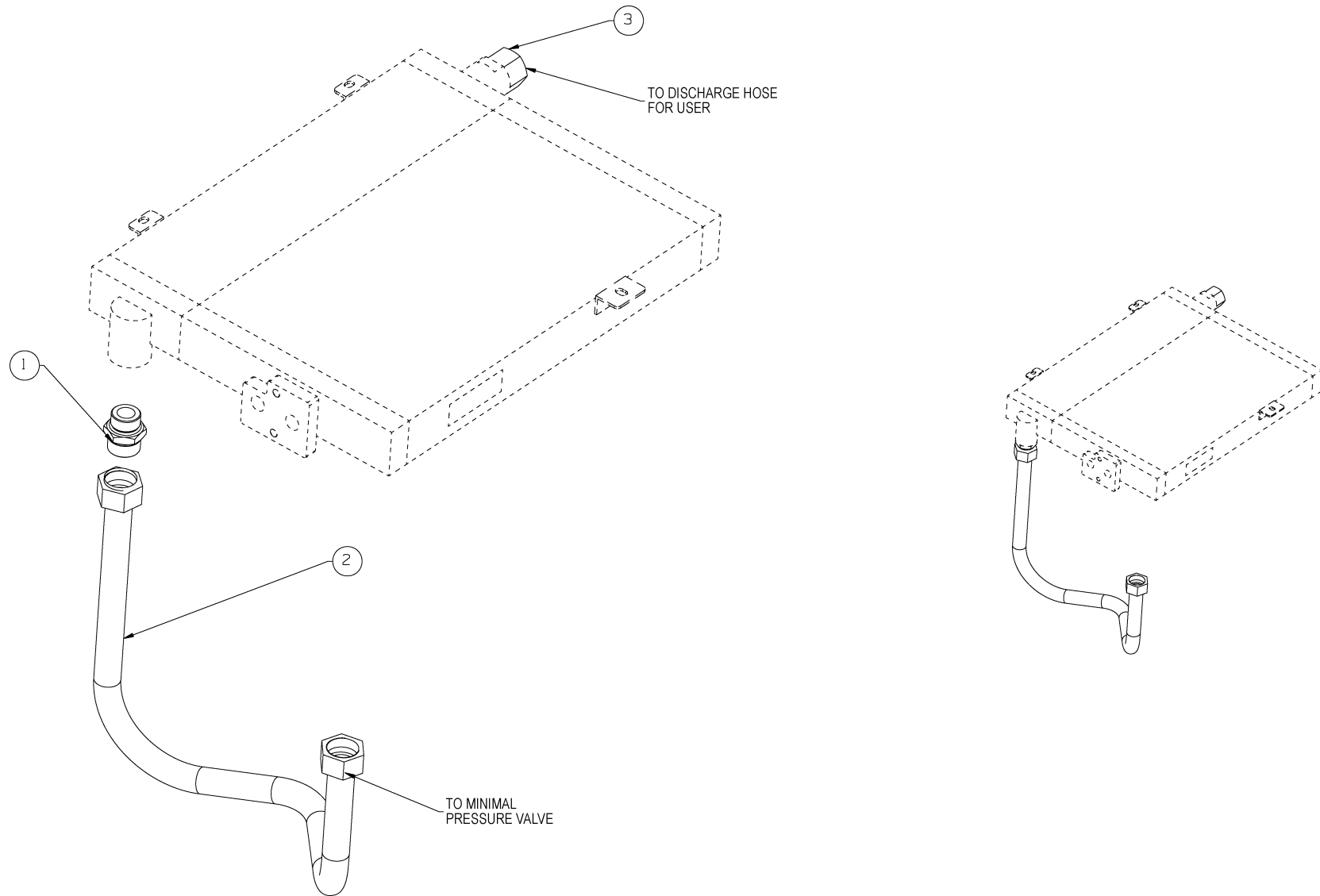


88291004-369 R00

**1.7 Discharge system—ST4, ST5, ST7**

Key	Part number	Qty	Description	Notes
1	88290015-789	1	Joint	
2	88290015-807	1	Discharge Pipe	
3	88290017-269	1	Joint	used for non-American model without sump tank system
	88290017-268	1	Joint	used for American model without sump tank system
4	883527-012	2	Joint	
5	88818206-016	3	Bolt	
6	88831106-016	3	Washer	
7	88832106-016	3	Spring Washer	
8	88842035-023	2	O-ring	

### 1.8 Discharge system—ST11, ST15



88290014-513 R02

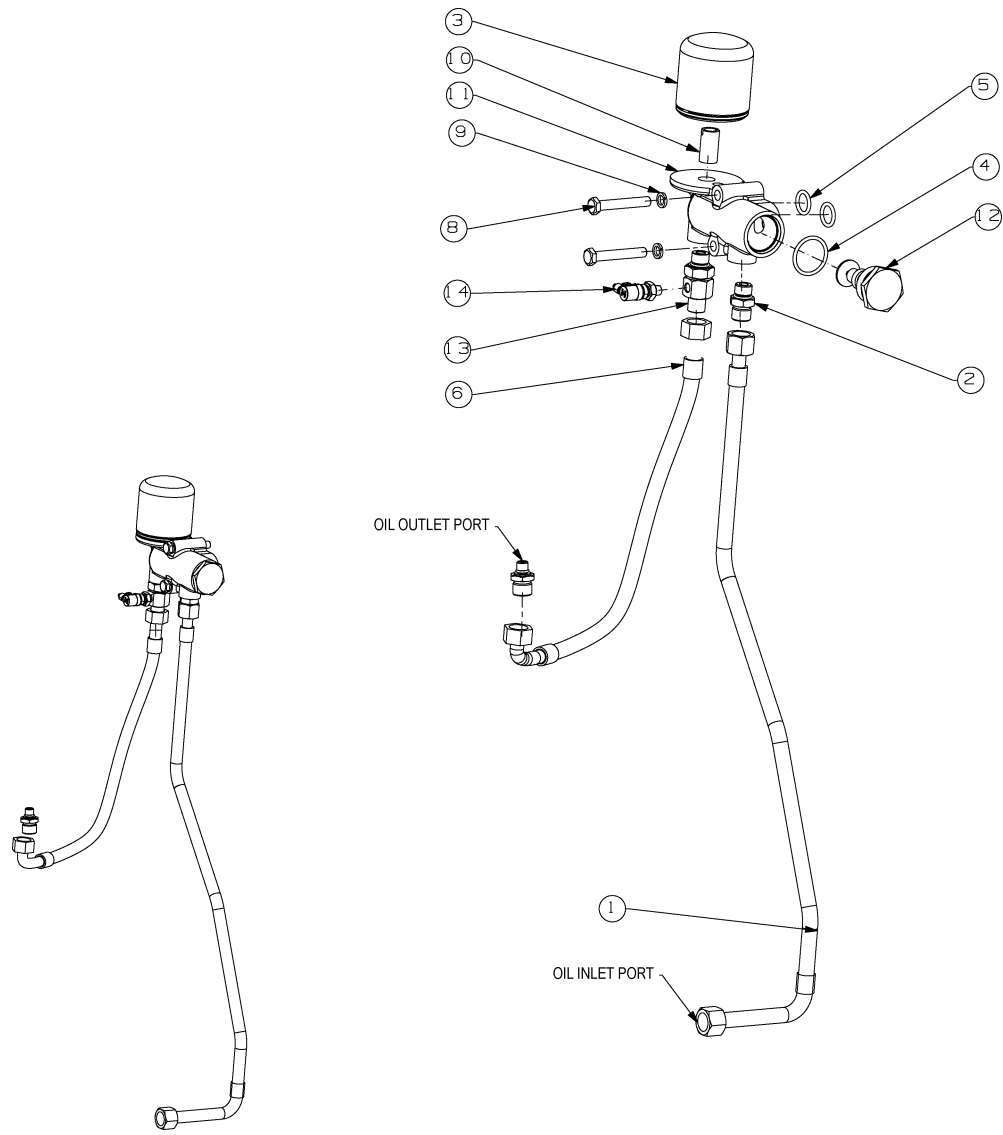
## 1.8 Discharge system—ST11, ST15

Key	Part number	Qty	Description	Notes
1	88290015-620	1	Fitting	
2	88290015-622	1	Hose	
3	88290017-188	1	Fitting	

### Drawing notes

A1	CUSTOMER AIR OUT CONNECTION
A2	TO MINIMUM PRESSURE VALVE

### 1.9 Fluid piping—ST4, ST5, ST7

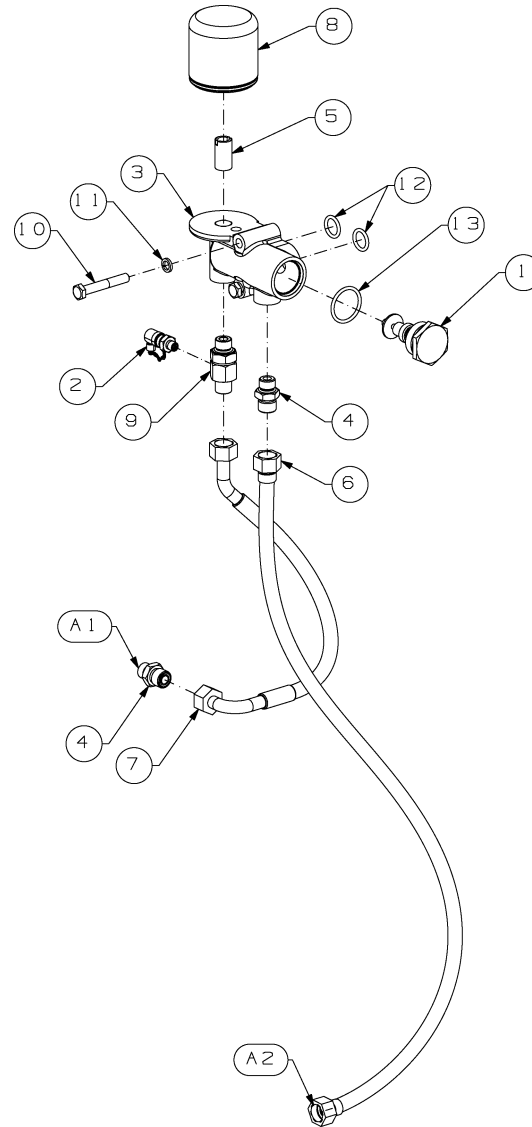


88292015-410 R00

**1.9 Fluid piping—ST4, ST5, ST7**

Key	Part number	Qty	Description	Notes
1	88290016-248	1	Fluid Bleeding Pipe	
2	88290014-319	2	Joint	
3	88290014-484	1	Fluid Filter	
4	88842035-035	1	O-ring	
5	88842035-019	2	O-ring	
6	88290015-764	1	Return Line	
7	88290015-673	1	Joint	
8	88811110-065	2	Bolt	
9	88832110-026	2	Spring Gasket	
10	88290014-321	1	Stud	
11	88290014-210	1	Fluid Filter Housing	
12	02250092-081	1	Thermal Valve Element	rated discharge pressure<12bar
	02250148-796	1	Thermal Valve Element	rated discharge pressure≥12bar
13	88292016-286	1	Adapter,end adjust	
14	02250196-306	1	Valve,KP18NV	
15	87250009-396	1.1US Gal	Lubricant, Sullube 2G 1gal	

### 1.10 Fluid piping—ST11, ST15



88292016-328 R00

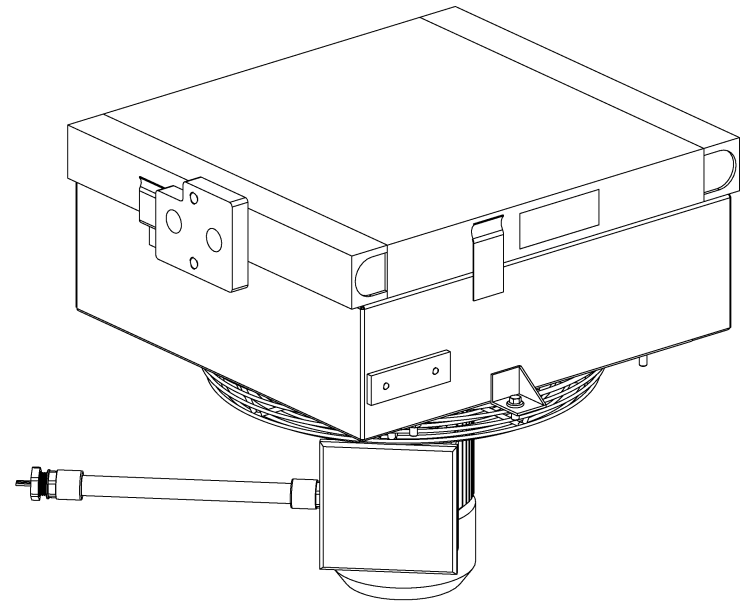
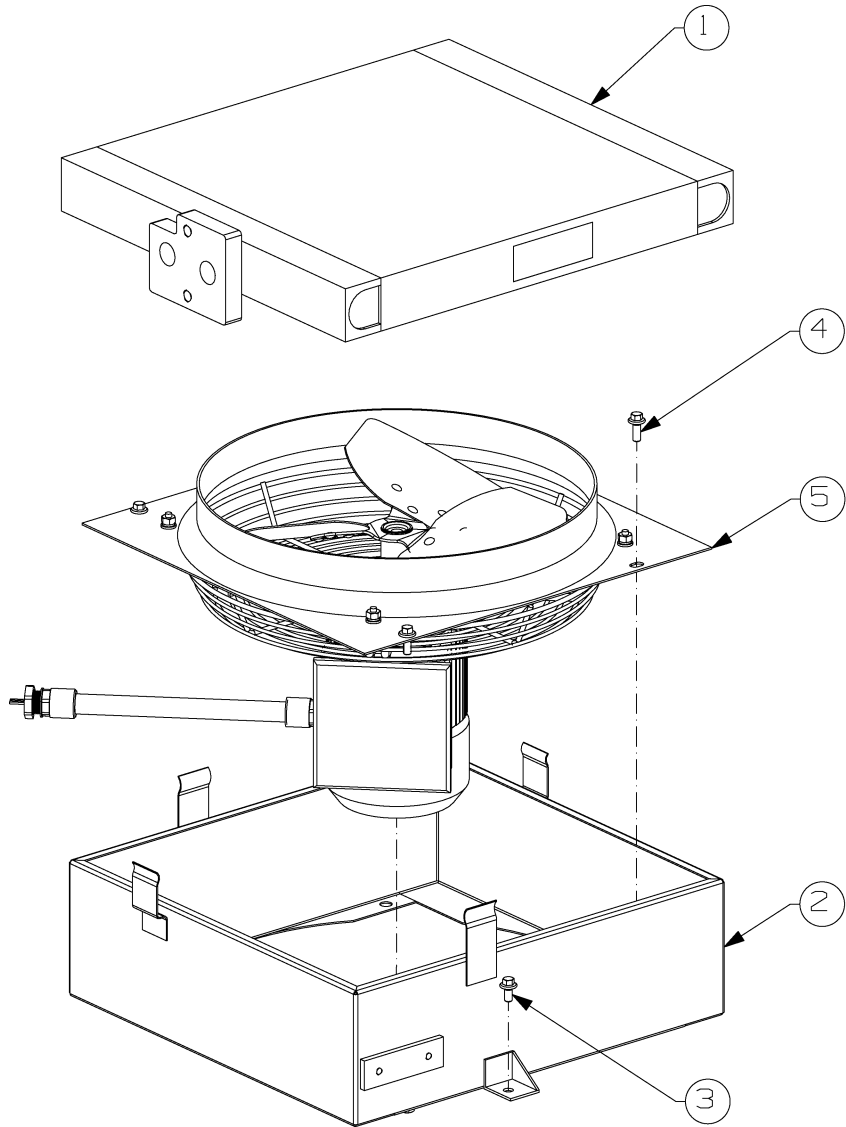
**1.10 Fluid piping—ST11, ST15**

Key	Part number	Qty	Description	Notes
1	02250092-081	1	Thermal Valve Element	Used for rated discharge pressure<12bar
	02250148-796	1	Thermal Valve Element	Used for rated discharge pressure≥12bar
2	02250196-306	1	Oil Sample Valve	
3	88290014-210	1	Fluid Filter Housing	
4	88290014-319	2	Joint	
5	88290014-321	1	Stud	
6	88290014-433	1	Fluid Pipe	
7	88290014-434	1	Fluid Pipe	
8	88290014-484	1	Fluid Filter	
9	88292016-286	1	Joint	
10	88811110-065	2	Bolt	
11	88832110-026	2	Spring Gasket	
12	88842035-019	2	O-ring	
13	88842035-035	1	O-ring	
14	87250009-396	1.4 US Gal	Sullube 2G	

**Drawing notes**

A1	TO AIREND
A2	TO SEPARATOR TUBE

### 1.11 Cooling system—ST4, ST5, ST7

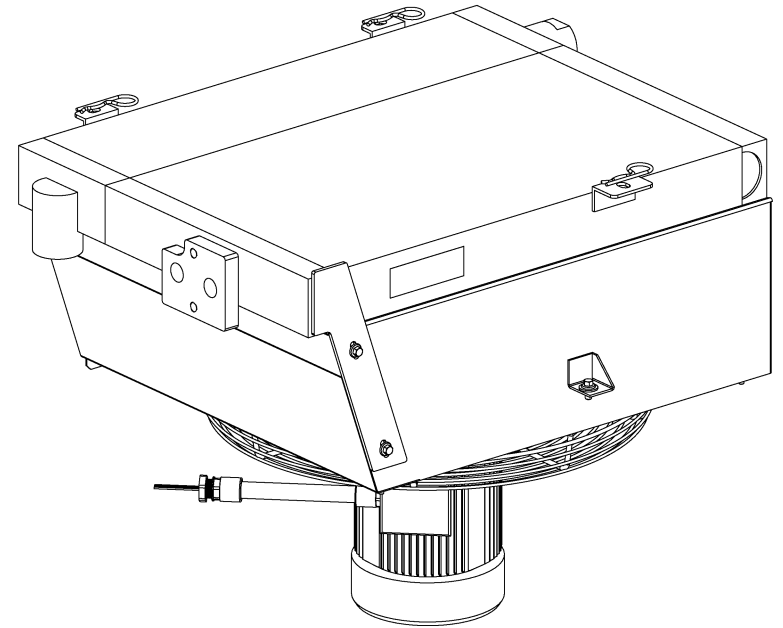
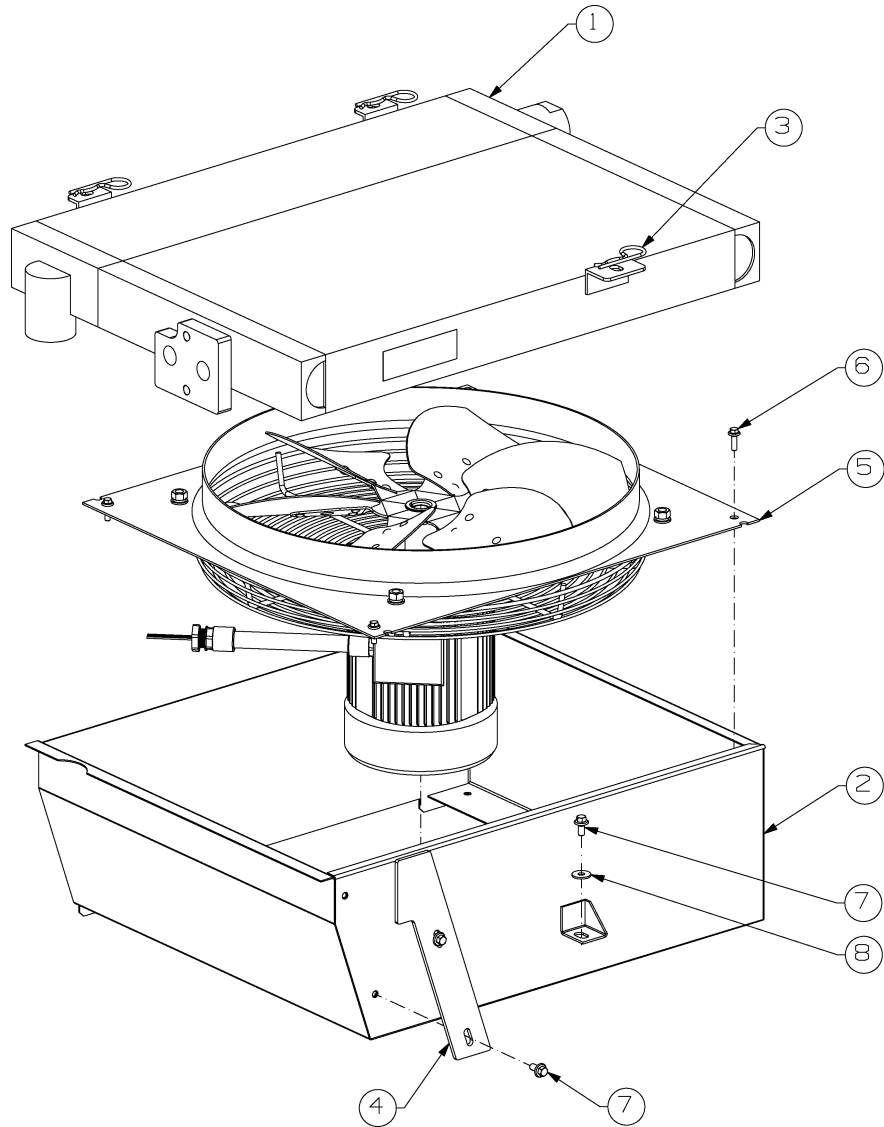


88292016-532 R00

**1.11 Cooling system—ST4, ST5, ST7**

Key	Part number	Qty	Description	Notes
1	88290015-765	1	Fluid Cooler	
2	88290015-766	1	Heat Dissipation Guard	
3	88813106-012	1	Flange Bolt	
4	88813106-016	4	Flange Bolt	
5	88292015-692	1	Industrial Axial Flow Fan	208-230/460V 60Hz UL&CSA

### 1.12 Cooling system—ST11, ST15

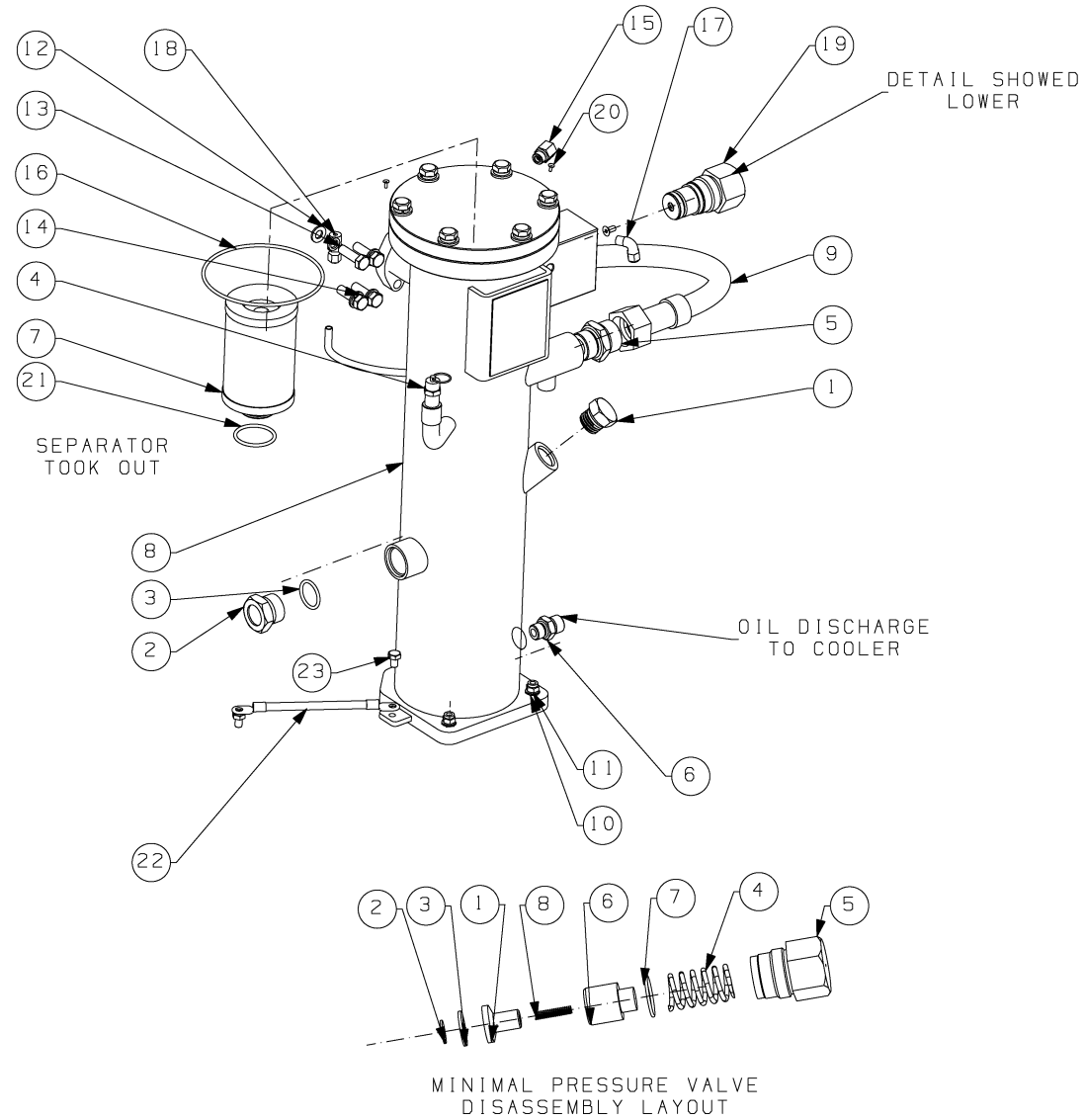


88292016-329 R00

**1.12 Cooling system—ST11, ST15**

Key	Part number	Qty	Description	Notes
1	88290014-225	1	After Cooler/Fluid Cooler	
2	88290014-282	1	Air Guide Sleeve	
3	88290014-557	3	R-shape Pin	
4	88290020-082	1	Support	
5	88292015-708	1	Industrial Axial Flow Fan	208-230/460V 60Hz UL&CSA
6	88813105-016	4	Flange Bolt	
7	88813106-012	3	Flange Bolt	
8	88833106-018	1	Large Flat Washer	

1.13 Separator tube and piping—ST4, ST5, ST7



88292030-666 R00



88292018-237 R01  
 Subject to EAR, ECCN EAR99 and related export control restrictions.

**1.13 Separator tube and piping—ST4, ST5, ST7**

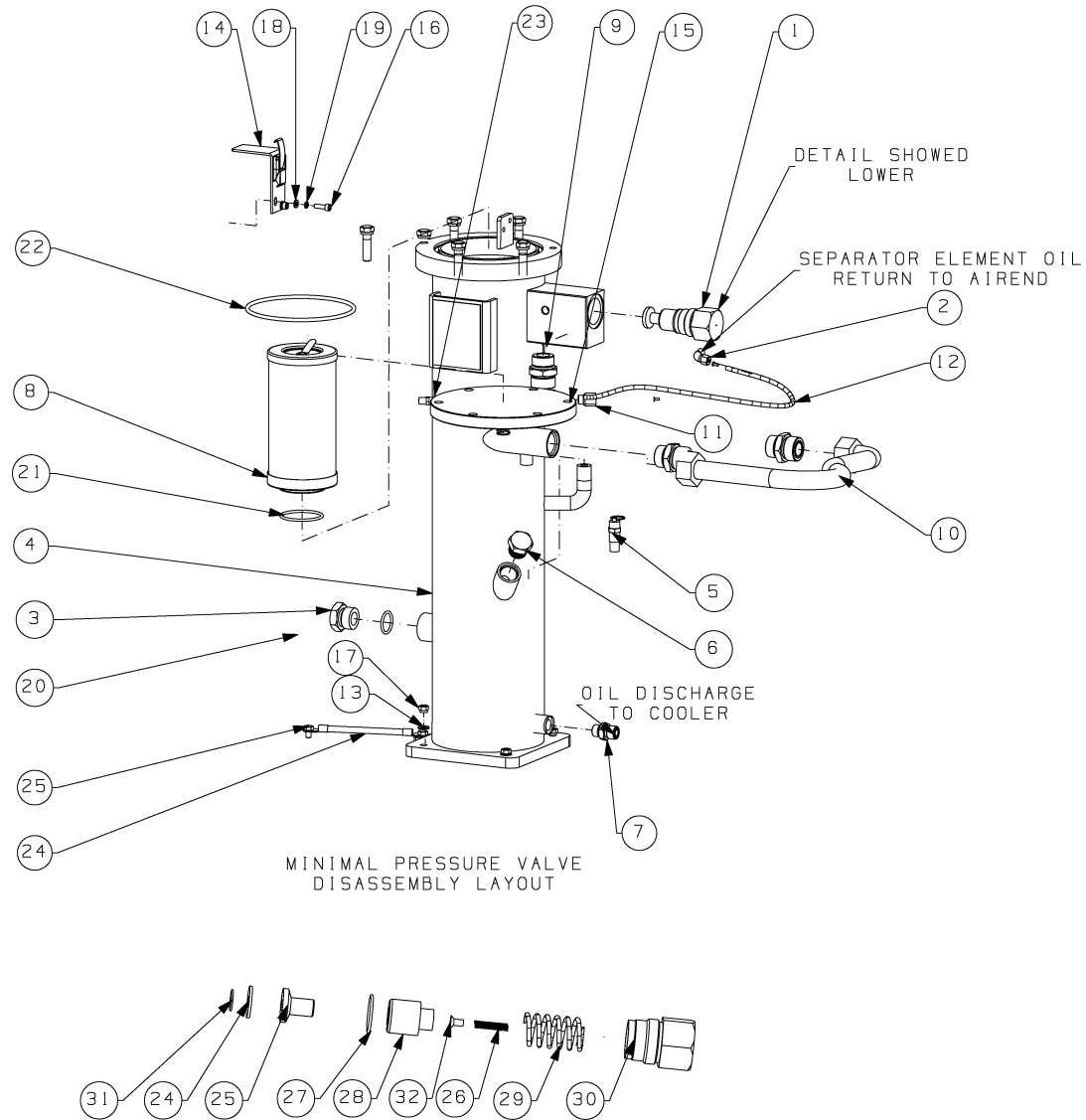
Key	Part number	Qty	Description	Notes
1	88290014-294	1	PLUG,TANK ADD OIL WS11/WS15	
2	88290014-222	1	OIL RETURN SIGHT GLASS	
3	88842035-028	1	O-RING,VITON 28X3.55 GB3452.1	GB/T3452.1
4	88290016-055	1	VLV,RLF ASME R1/4 1.5MPA+	AUSTRALIA AND AMERICA MODEL
5	88290015-620	1	FTG,M33X2 TO 1-7/16UN	
6	88290014-319	1	FTG,METR STR THD/ORFC M18X1.5+	
7	88290015-049	1	ELEM,AIR/OIL SEP WS708	
8	88292019-650	1	TNK,TANK ST4-7	CRN TANK
9	88290016-253	1	HOSE,AIR WS4/5/7	
10	88290015-923	3	WSHR,16.6X8.2	QUANTITY IS 3 FOR ASME TANK
11	88823008-095	3	NUT,M8 LOCK GB889-86 SSAI	QUANTITY IS 3 FOR ASME TANK
12	88831110-020	3	WASHER,10 GB97.1-85 GAV SSAI	GB/T97
13	88812110-035	3	SCREW M10X35 GB5783 GAV SSAI	
14	88832110-026	3	WASHER,SPRG 10 GB93-87 GAVSSAI	
15	88290015-890	1	FILTER -RETURN OIL	
16	88842035-140	1	O-RING,VITON 140X3.55 GB3452.1	FOR ASME TANK
17	250018-429	1	ELBOW, 1/4" TUBE X 1/8" NPT	
18	250018-428	1	CONN, 1/4" TUBE X 1/4" NPT	
19	02250046-338	1	VLV,MIN PRESS GROUP E08E	
20	88290022-779	2	INSR,NYL TBG 1/4 OD X 0.062W	
21	88842035-041	1	O-RING,VITON 41.2X3.55GB3452.1	GB/T3452.1
22	88292011-696	1	TERM,SC16-8+16SQMM	
23	88812108-012	2	SCREW,M8X12 GBT5783 GAV SSAI	GB/T5783
<b>Minimal Pressure Valve Disassembly Layout</b>				
1	02250047-163	1	STEM, MINIMUM PRESS VALVE-8E	

**1.13 Separator tube and piping—ST4, ST5, ST7**

Key	Part number	Qty	Description	Notes
2	02250077-193	1	WASHER,FLAT ZINC PLATD TAB	
3	02250047-162	1	SEAT,MIN. PRESS. VALVE-8E	
4	02250047-161	1	SPG,MINIMUM PRESS -8E	
5	250035-587	1	CAP, MINIMUM PRESS VALVE-8E	
6	02250048-908	1	PSTN,MIN.PRESS.VALVE-8E	
7	826502-124	1	O-RING, VITON 1 1/4 X 3/32"	
8	02250047-296	1	SPG,MIN PRESSCOMPRESSION-8E	

**Notes:**

1.14 Separator tank and tube—ST11, ST15



88292031-134 R00

**1.14 Separator tank and tube—ST11, ST15**

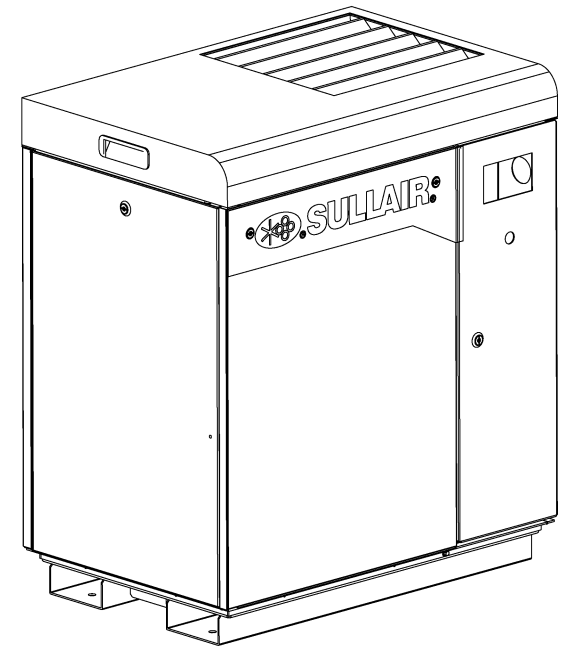
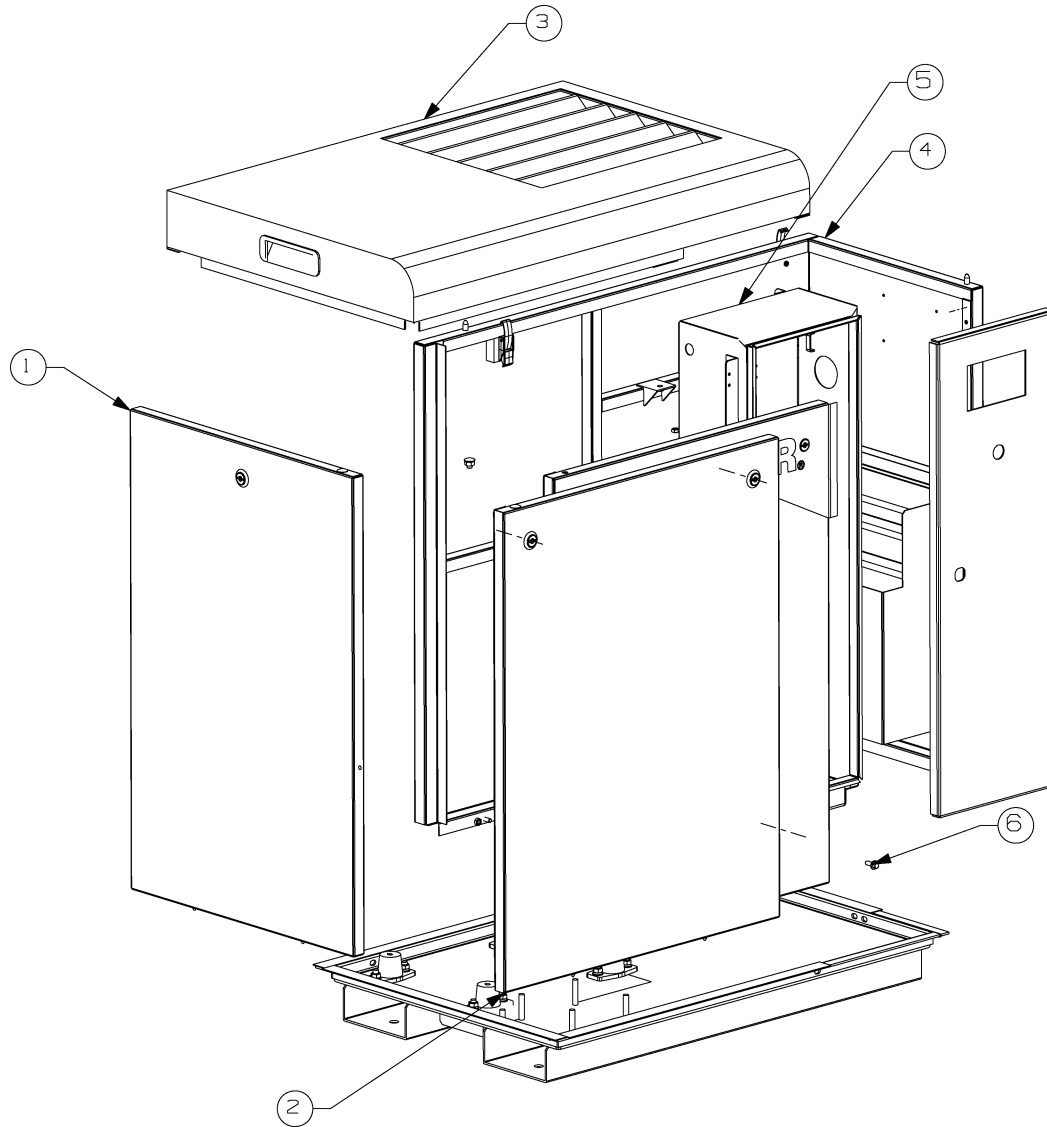
Key	Part number	Qty	Description	Notes
1	02250046-338	1	VLV,MIN PRESS GROUP E08E	
2	250018-429	1	ELBOW, 1/4" TUBE X 1/8" NPT	
3	88290014-222	1	GL,SIGHT M33	
4	88292019-651	1	TNK,TANK CRN ST11-15	GB TANK
5	88290016-055	1	VLV,RLF ASME R1/4 1.5MPA	AUSTRALIA AND AMERICA MODEL
6	88290014-294	1	PLUG,TANK ADD OIL WS11/WS15	
7	88290014-319	1	FTG,METR STR THD/ORFC M18X1.5+	
8	88290015-567	1	ELEM,AIR/OIL SEP	
9	88290015-620	3	FTG,M33X2 TO 1-7/16UN	
10	88290015-621	1	HOSE,AIR15-20HP DN25	
11	88290015-890	1	FLTR,V-TYPE 200PSI X 1/8	
12	88290015-891	1	TUBE,1/4 TRANSPARENT PER METER	
13	88290015-923	3	WSHR,16.6X8.2	
14	88290016-479	1	SUPT,ROOF AIRFLTR IN WS11/15	
15	88290022-779	2	INSR,NYL TBG 1/4 OD X 0.062W	
16	88818206-020	2	SCREW.SOCKET M6X20 GB/T70.1	M6X20
17	88823008-095	3	NUT,M8 LOCK GB889-86 SSAI	M8
18	88831106-016	2	WASHER,6 GB97.1-85 GAV SSAI	6
19	88832106-016	2	WASHER,SPRG 6 GB93-87 GAV SSAI	6
20	88842035-028	1	O-RING,VITON 28X3.55 GB3452.1	
21	88842035-058	1	O-RING,VITON 58X3.55 GB3452.1	
22	88842053-155	1	O-RING,VITON 155X5.3 GB3452.1	FOR GB TANK
23	250018-427	1	CONN, 1/4" TUBE X 1/8" NPT	
24	88292011-696	1	TERM,SC16-8+16SQMM	
25	88812108-012	2	SCREW,M8X12 GBT5783 GAV SSAI	
<b>Minimal Pressure Valve Disassembly Layout</b>				
24	02250047-162	1	SEAT,MIN. PRESS. VALVE-8E	

**1.14 Separator tank and tube—ST11, ST15**

Key	Part number	Qty	Description	Notes
25	02250047-163	1	STEM, MINIMUM PRESS VALVE-8E	
26	02250047-296	1	SPG,MIN PRESSCOMPRESSION-8E	
27	826502-124	1	O-RING, VITON 1 1/4 X 3/32"	
28	02250048-908	1	PSTN,MIN.PRESS.VALVE-8E	
29	02250047-161	1	SPG,MINIMUM PRESS -8E	
30	250035-587	1	CAP, MINIMUM PRESS VALVE-8E	
31	02250077-193	1	WASHER,FLAT ZINC PLATD TAB	
32	865006-012	1	SCRW,FLT HD M6 X 12	

**Notes:**

### 1.15 Enclosure—ST4, ST5, ST7

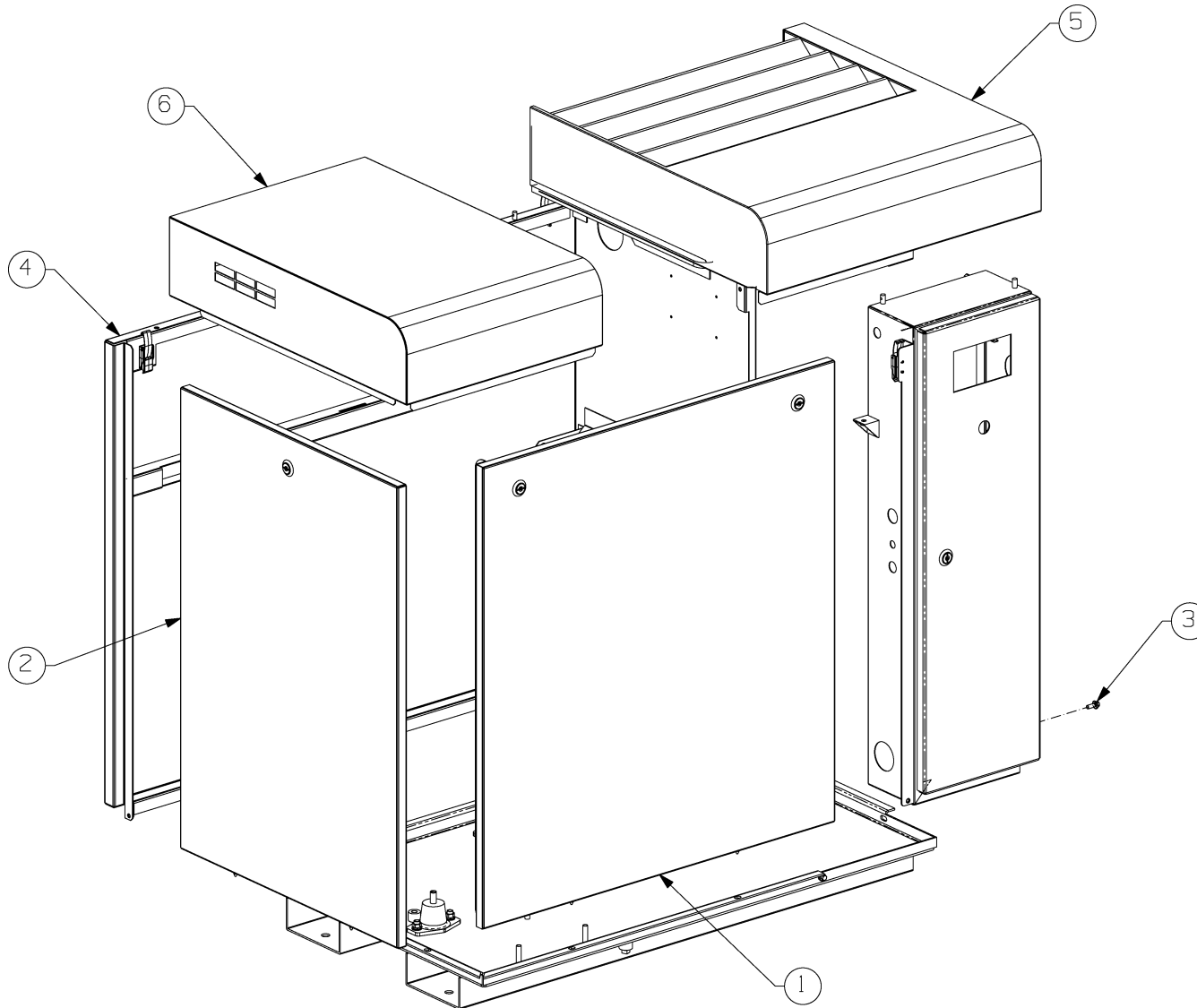


88290015-744 R04

**1.15 Enclosure—ST4, ST5, ST7**

Key	Part number	Qty	Description	Notes
1	88290015-760	1	Side Door	
2	88290015-762	1	Front Door	
3	88290015-761	1	Top Cover	
4	88290015-719	1	Side Plate	
5	88290017-093	0.13m <sup>2</sup>	Sound Absorbing Sponge	
6	88813106-016	8	Flange Bolt	

### 1.16 Enclosure—ST11, ST15

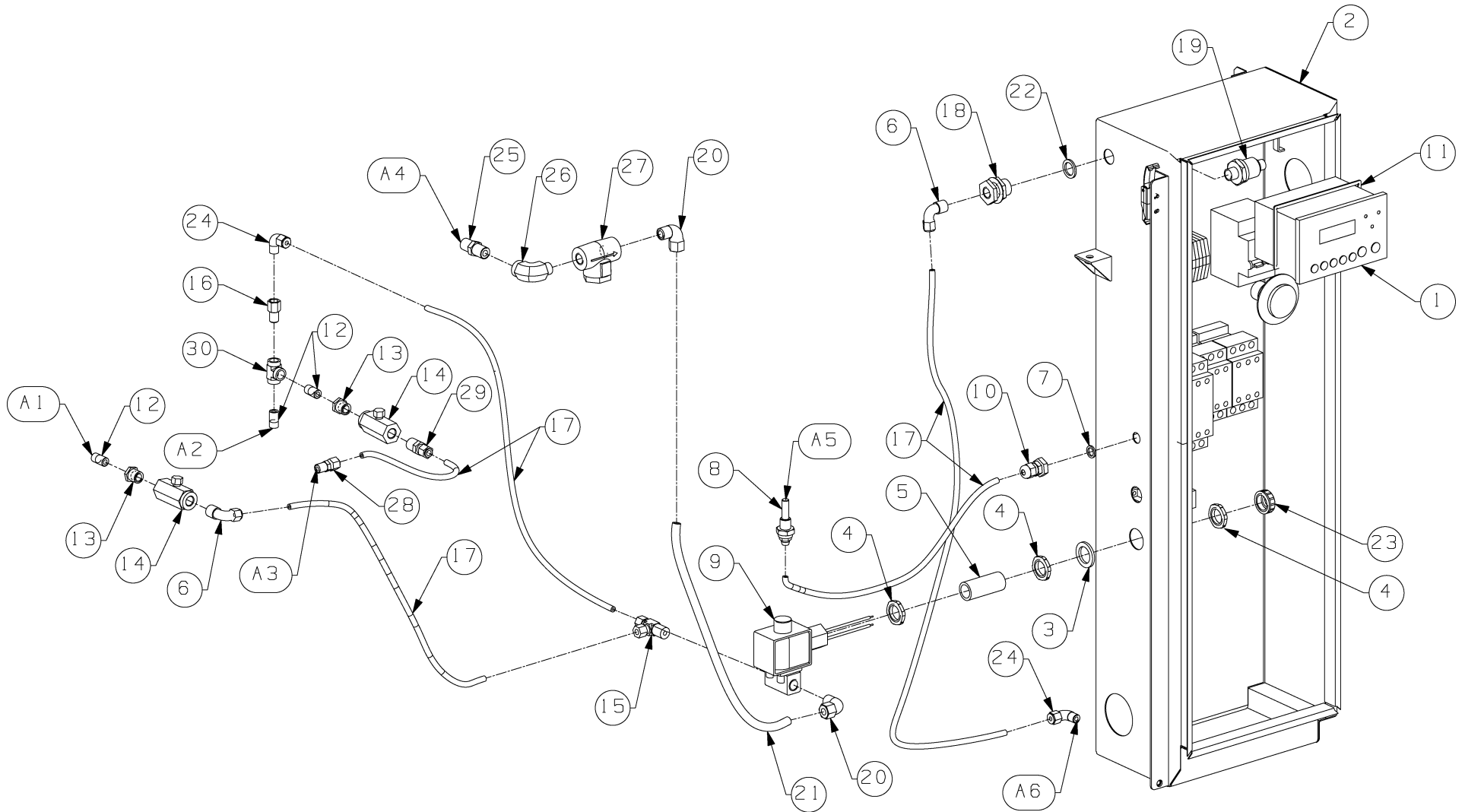


88290014-520 R06

**1.16 Enclosure—ST11, ST15**

Key	Part number	Qty	Description	Notes
1	88290014-281	1	Front Door	
2	88290014-280	1	Side Door	
3	88813106-016	8	Flange Bolt	
4	88290015-876	1	Side Plate	
5	88290016-476	1	Air Discharge Top Plate	
6	88290016-477	1	Air Filter Inlet Top Plate	

1.17 Control assembly—ST4, ST5, ST7



88290015-748 R13

**1.17 Control assembly—ST4, ST5, ST7**

Key	Part number	Qty	Description	Notes
1	88290018-640	1	Computer Control Panel	
2	88292015-406	1	Electric Cabinet Assembly	ST4 208-230/460V
	88292015-407	1		ST5/07 208-230/460V
	88292015-321	1		ST4-7 575V
3	88290015-924	1	Rubber Washer	
4	847200-050	3	Locknut	
5	250007-170	1	Connection Pipe	
6	250018-430	2	Elbow	
7	88290015-926	1	Rubber Washer	
8	88290014-534	1	Temperature Probe	
9	88290015-219	1	Solenoid Valve	
10	250023-496	1	Wire Locknut	
11	88290015-928	1	Rubber Spacer	
12	823202-000	3	Joint	
13	807600-005	2	Reducer	
14	02250110-557	2	Check Valve	
15	250038-059	1	Three-Way Joint	
16	026367	1	Orifice	
17	88290015-891	7ft	Nylon Tube	
18	841500-004	1	Combined Joint	
19	88290014-514	1	Pressure Transducer	
20	02250099-626	2	Elbow	
21	88290017-053	2ft	Nylon Tube	
22	88290015-925	1	Rubber Washer	
23	848815-050	1	Protective Cap	
24	250018-429	2	Elbow	
25	868504-025	1	Joint	

**1.17 Control assembly—ST4, ST5, ST7**

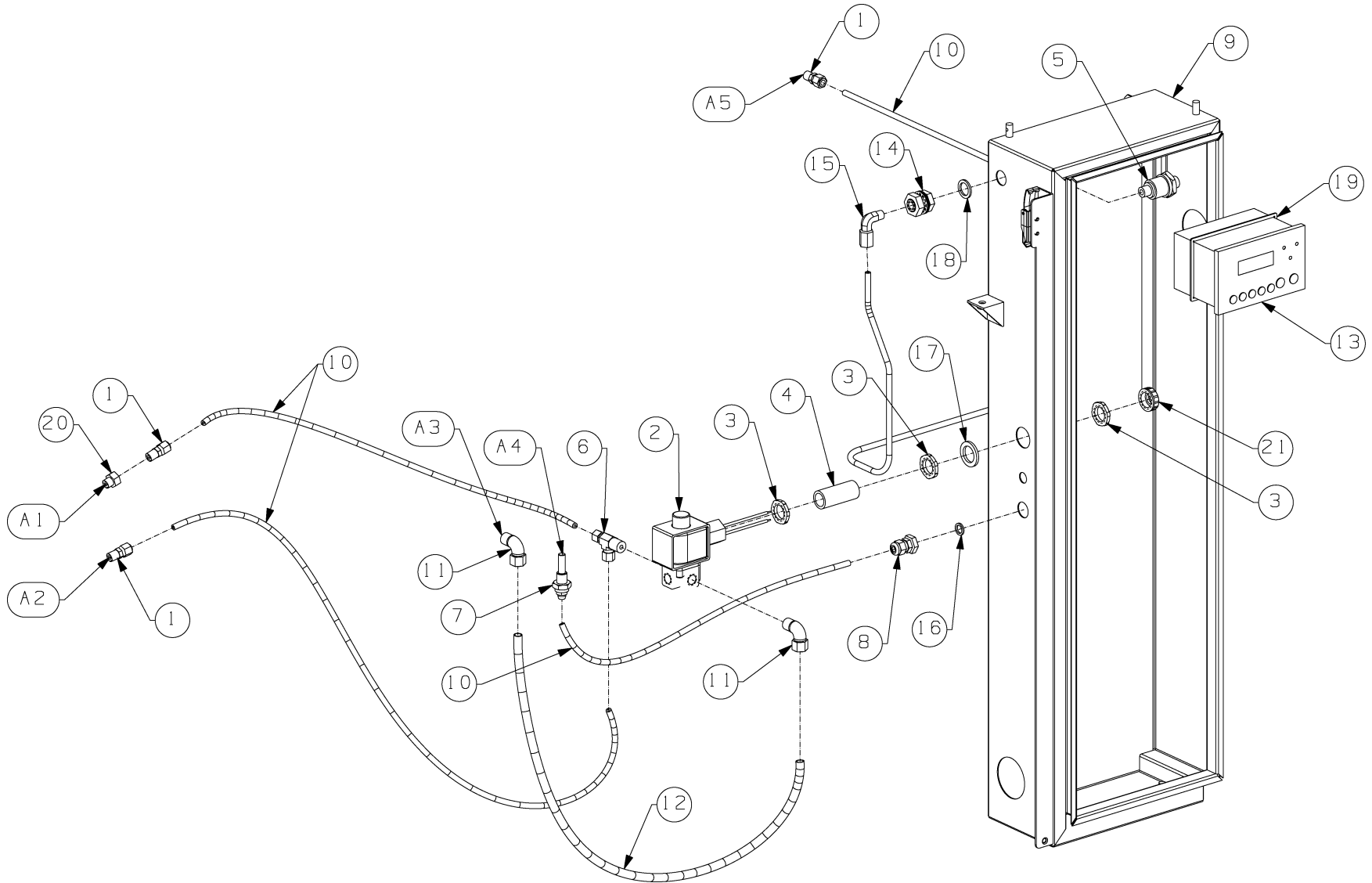
Key	Part number	Qty	Description	Notes
26	860704-025	1	Elbow	
27	241771	1	Filtering Screen	
28	250018-427	1	Straight Joint	
29	250018-428	1	Straight Joint	
30	878212-012	1	Tee	

**Drawing notes**

A1	TO AIREND
A2	TO AIR INLET
A3	TO INLET VALVE
A4	TO MINIMUM PRESSURE VALVE
A5	TO SEPARATOR TUBE
A6	TO CUSTOMER AIR OUT CONNECTION

**Notes:**

1.18 Control assembly—ST11, ST15



88290015-163 R16

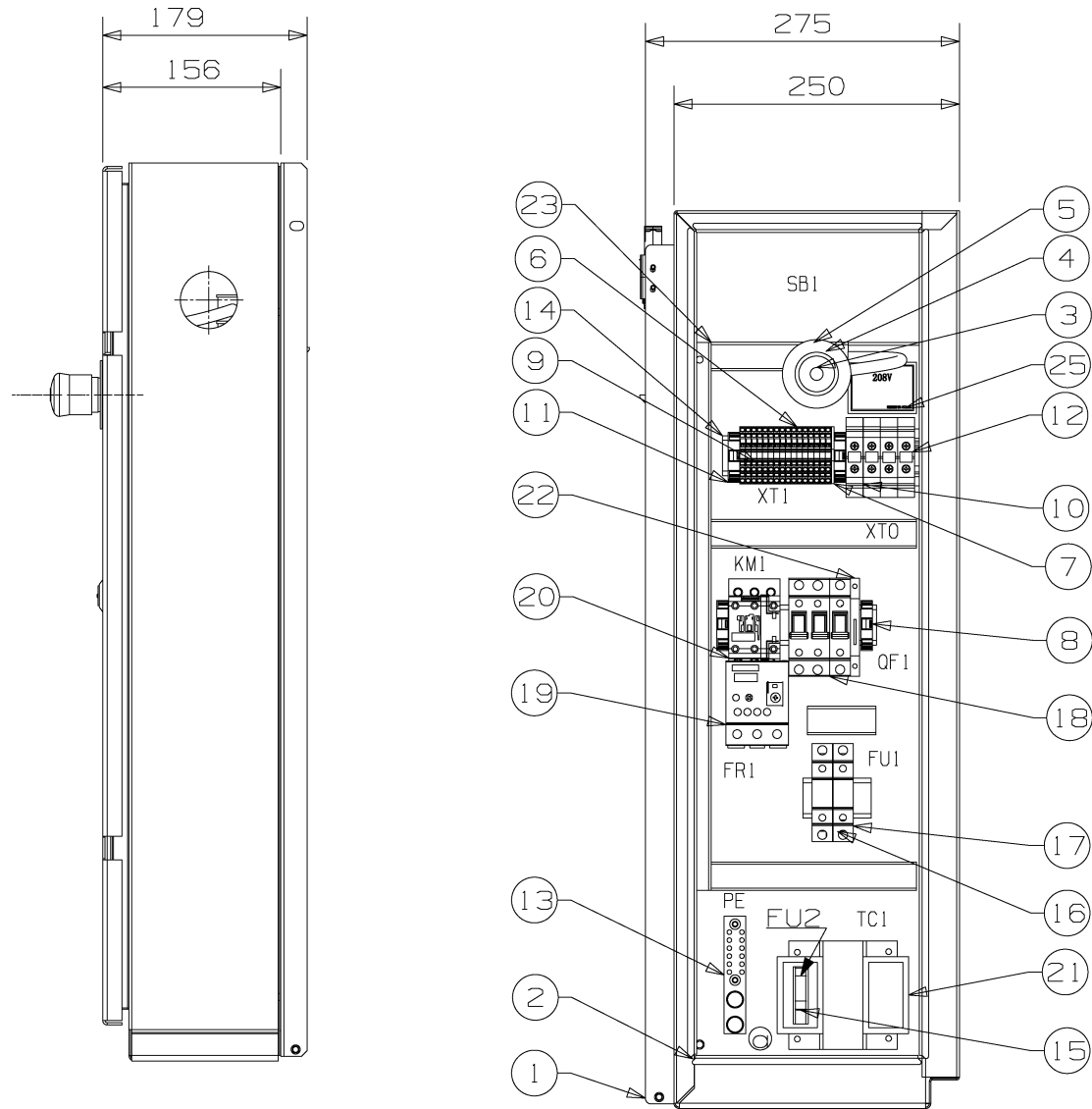
**1.18 Control assembly—ST11, ST15**

Key	Part number	Qty	Description	Notes
1	250018-427	3	Straight Joint	
2	88290015-219	1	Solenoid Valve	
3	847200-050	3	Locknut	
4	250007-170	1	Connection Pipe	
5	88290014-514	1	Pressure Transducer	
6	250038-059	1	Tee	
7	88290014-534	1	Temperature Probe	
8	250023-496	1	Wire Locknut	
9	88292015-408	1	Electric Cabinet Assembly	ST11/15 575V
	88292015-409	1	Electric Cabinet Assembly	ST11/15 208-230/460V
10	88290015-891	8.5ft	Nylon Tube	
11	02250099-626	2	Elbow	
12	88290017-053	2.5ft	Nylon Tube	
13	88290018-640	1	Computer Control Panel	
14	88290021-801	1	Combined Joint	
15	810504-012	1	Joint	
16	88290015-926	1	Rubber Washer	
17	88290015-924	1	Rubber Washer	
18	88290015-925	1	Rubber Washer	
19	88290015-928	1	Rubber Spacer	
20	040127	1	Orifice	
21	848815-050	1	Plastic Cover	

**Drawing notes**

A1	TO AIR INLET
A2	TO INLET VALVE
A3	TO MINIMUM PRESSURE VALVE
A4	TO SEPARATOR TUBE
A5	TO CUSTOMER AIR OUT CONNECTION

**1.19 Starter assembly—ST4, ST5, ST7, ST11, ST15 (208V/230V/460V)**



88292015-360 R01

**1.19 Starter assembly—ST4, ST5, ST7, ST11, ST15 (208V/230V/460V)**

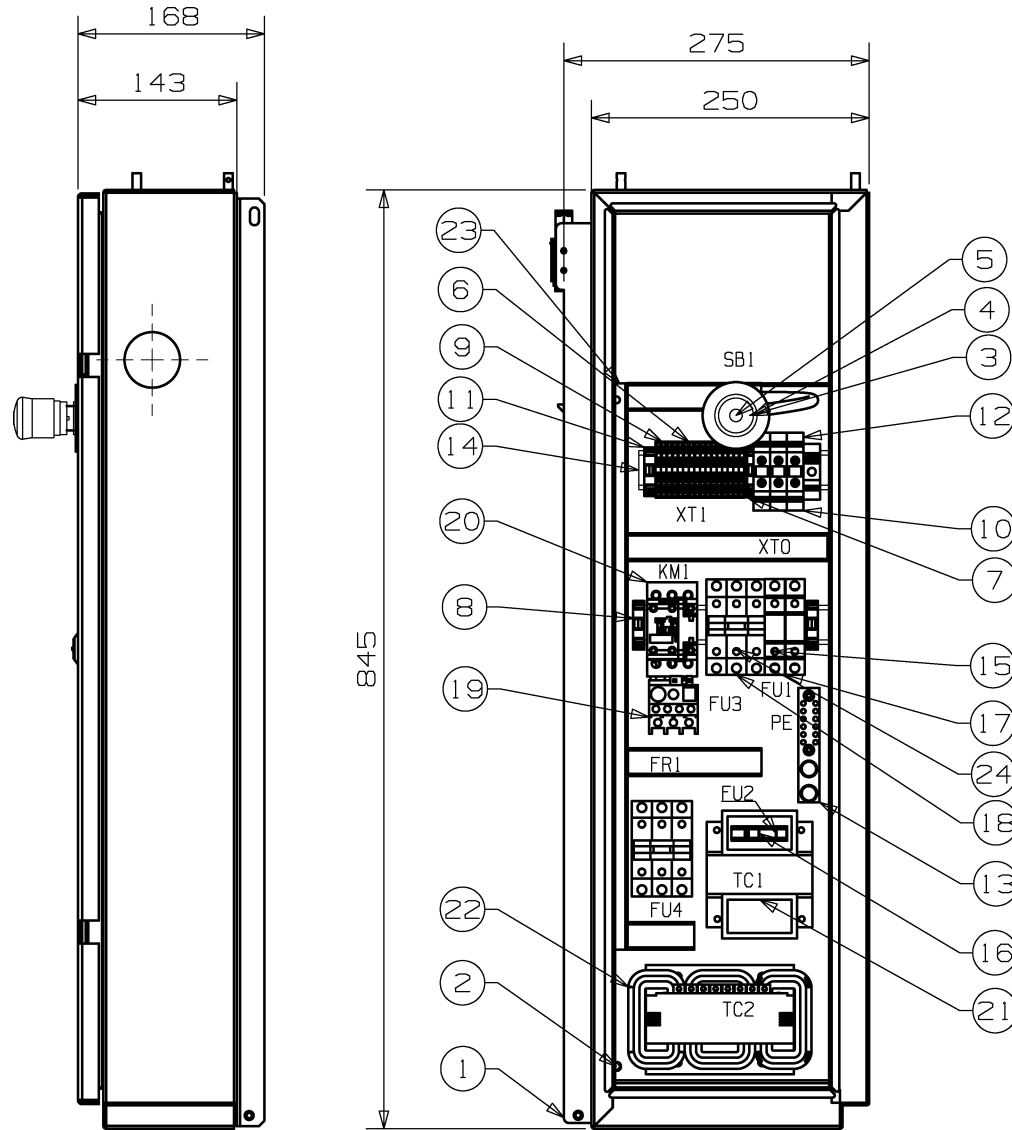
Key	Part number	Qty	Description	Note
1	88290018-290	1	PANEL BOX	ST4-17_Tri Voltage
	88290018-287	1	PANEL BOX	ST11/15_Tri Voltage
2	88292015-198	1	MOUNTING BOARD	
3	88290018-650	1	E-STOP BUTTON	
4	88290018-651	1	E-STOP CONTACT	
5	88290018-648	1	E-STOP WARNING CYCLE	
6	88290016-045	14	TERMINAL	
7	88290016-046	1	TERMINAL END PLATE	
8	88290016-047	4	TERMINAL END BLOCK	
9	88290017-859	2	TERMINAL(PE)	
10	88290016-049	2	TERMINAL	
11	88290016-048	1	END BLOCK	
12	88290018-652	1	TERMINAL(PE,BIG)	
13	88291011-460	1	PE BAR	
14	88290006-263	2	RAIL	
15	88290016-051	2	FUSE	
16	88290016-050	1	FUSE	
17	88290018-144	1	FUSE HOLDER	
18	88292015-318	1	BREAKER	ST4-07_Tri Voltage
	88292015-320		BREAKER	ST11/15_Tri Voltage
19	88292015-310	1	OVERLOAD RELAY	ST4_Tri Voltage
	88291013-035		OVERLOAD RELAY	ST5-07_Tri Voltage
	88291012-902		OVERLOAD RELAY	ST11/15_Tri Voltage
20	88292015-293	1	CONTACTOR	ST4_Tri Voltage
	88291012-881		CONTACTOR	ST5-07_Tri Voltage
	88292015-542		CONTACTOR	ST11/15_Tri Voltage
21	88290019-590	1	TRANSFORMER	

**1.19 Starter assembly—ST4, ST5, ST7, ST11, ST15 (208V/230V/460V)**

Key	Part number	Qty	Description	Note
22	88292015-282	1	AUX.CONTACT	
23	88292015-203	4	WIRE DUCT	
24	88292015-361	2	FUSE	
25	88292015-417	1	VOLTAGE DECAL	

**Notes:**

1.20 Starter assembly—ST4, ST5, ST7, ST11, ST15 (575V)

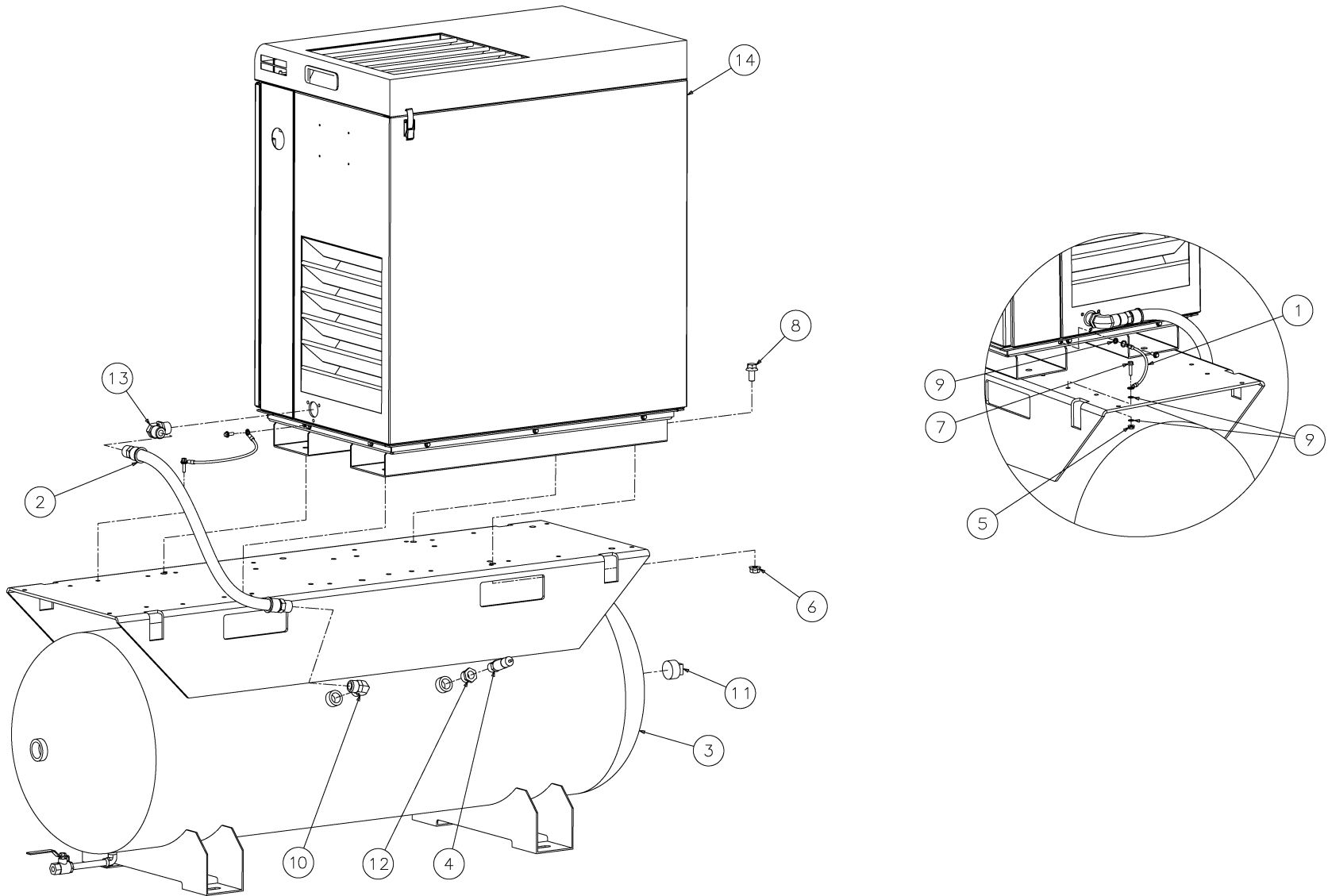


88292015-408 R00

**1.20 Starter assembly—ST4, ST5, ST7, ST11, ST15 (575V)**

Key	Part number	Qty	Description	Note
1	88290018-290	1	PANEL BOX	FOR ST4-07,575V
	88290018-287	1	PANEL BOX	FOR ST11/15,575V
2	88292015-198	1	MOUNTING BOARD	
3	88290018-650	1	E-STOP BUTTON	
4	88290018-651	1	E-STOP CONTACT	
5	88290018-648	1	E-STOP WARNING CYCLE	
6	88290016-045	14	TERMINAL	
7	88290016-046	1	TERMINAL END PLATE	
8	88290016-047	4	TERMINAL END BLOCK	
9	88290017-859	2	TERMINAL(PE)	
10	88290016-049	2	TERMINAL	
11	88290016-048	1	END BLOCK	
12	88290018-652	1	TERMINAL(PE,BIG)	
13	88291011-460	1	PE BAR	
14	88290006-263	2	RAIL	
15	88290016-051	2	FUSE	FOR ST11/15,575V
		8	FUSE	FOR ST4-17,575V
16	88290016-050	1	FUSE	
17	88290018-144	1	FUSE HOLDER	
18	88292008-359	1	FUSE HOLDER	
19	88292015-310	1	OVERLOAD RELAY	
20	88291012-881	1	CONTACTOR	
21	88290019-591	1	TRANSFORMER	
22	88290017-397	1	TRANSFORMER(3P)	
23	88292015-203	5	WIRE DUCT	
24	88291012-905	6	FUSE	FOR ST11/15,575V

1.21 Tank mount package without dryer—ST4, ST5, ST7

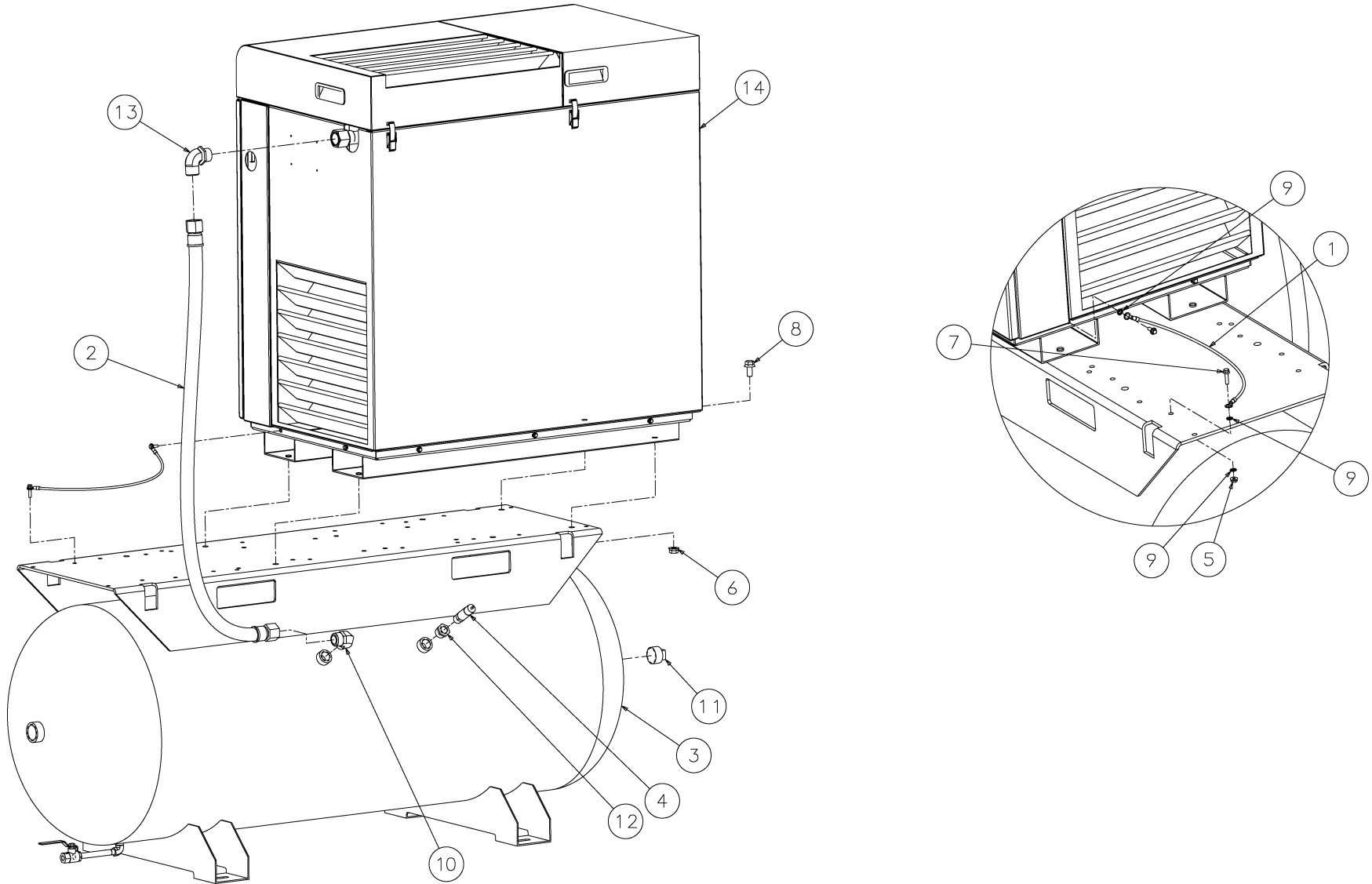


02250231-948 R00

**1.21 Tank mount package without dryer—ST4, ST5, ST7**

Key	Part number	Qty	Description	Notes
1	02250157-279	1	WIRE,GROUND BOND 12" 10 GA	
2	02250171-083	1	HOSE,3/4 UNIT/TNK OPEN ES6 W/D	
3	02250231-860	1	TANK,ASSY ES6 80 GAL	
4	250006-938	1	VALVE,RELIEF 1/2" 200#	
5	825304-236	1	NUT, HEX FLGD PLTD 1/4-20	
6	825308-458	4	NUT, HEX FLGD PLTD 1/2-13	
7	829704-100	1	SCREW, HX SER WASH 1/4" X 1"	
8	829708-100	4	SCREW, HX SER WASH 1/2 X 1"	
9	838404-028	3	WASHER, LOCK EXT TOOTH 1/4"	
10	860212-075	1	ELBOW, 37FL 90M 3/4 X 3/4"	
11	866900-050	1	PLUG,PIPE 1 1/4" 3000# STL PLT	
12	867103-020	1	BUSHING,RED 3/4 X 1/2" STL PLT	
13	888827-012	1	ELBOW,MET ST THD M27 X 1 1/16	
14	VARIOUS	1	INSTALLATION Design Item (dwg), ST 400/500/700	

### 1.22 Tank mount package without dryer—ST11, ST15

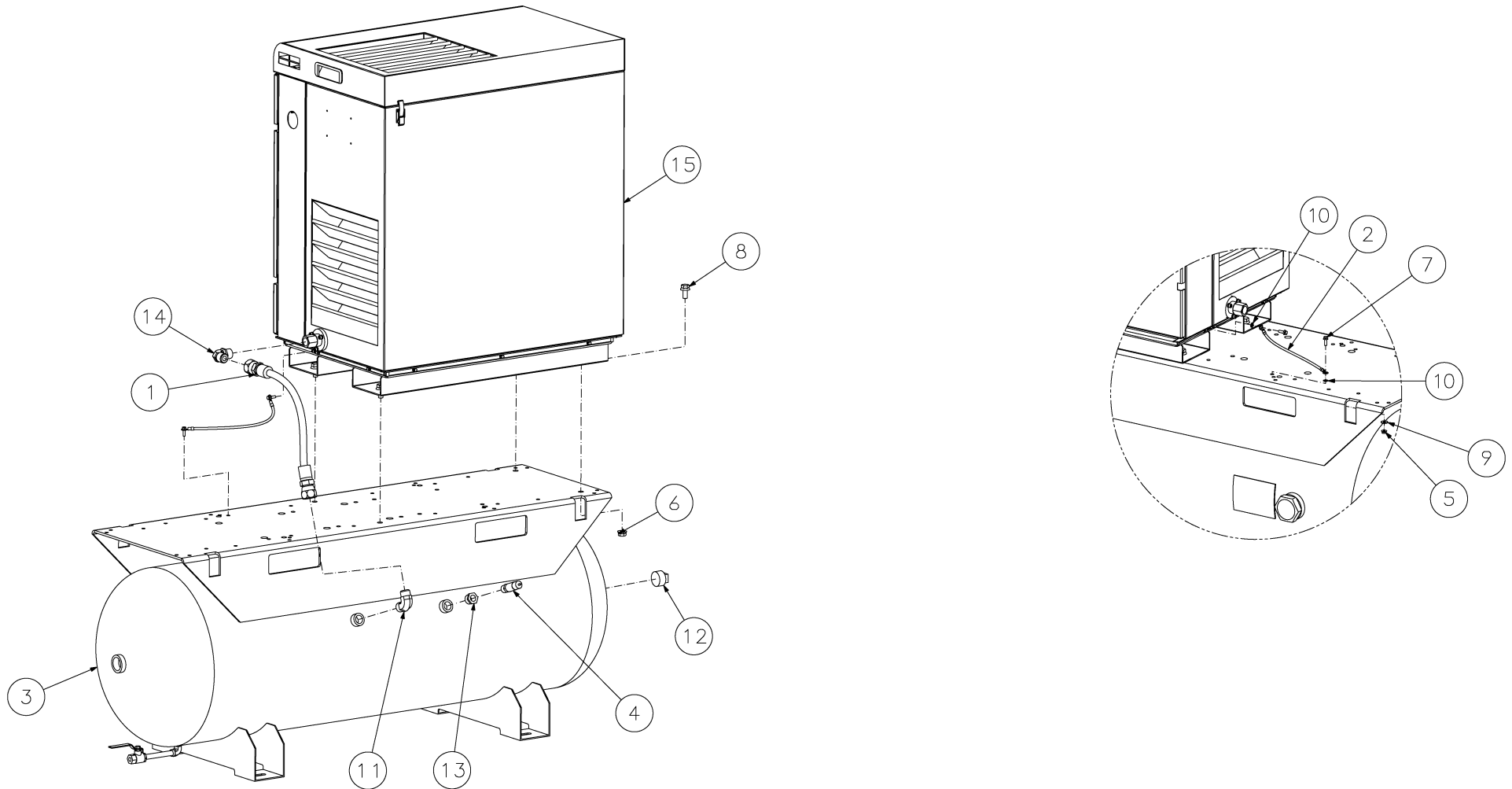


02250231-994 R00

**1.22 Tank mount package without dryer—ST11, ST15**

Key	Part number	Qty	Description	Notes
1	02250157-279	1	WIRE,GROUND BOND 12" 10 GA	
2	02250184-397	1	HOSE,HYD PARKRIMP 1" X 51	
3	02250231-861	1	TANK,ASSY ES6 120 GAL	
4	250006-938	1	VALVE,RELIEF 1/2" 200#	
5	825304-236	1	NUT, HEX FLGD PLTD 1/4-20	
6	825308-458	4	NUT, HEX FLGD PLTD 1/2-13	
7	829704-100	1	SCREW, HX SER WASH 1/4" X 1"	
8	829708-100	4	SCREW, HX SER WASH 1/2 X 1"	
9	838404-028	3	WASHER, LOCK EXT TOOTH 1/4"	
10	860212-075	1	ELBOW, 37FL 90M 3/4" X 3/4"	
11	866900-050	1	PLUG,PIPE 1 1/4" 3000# STL PLT	
12	867103-020	1	BUSHING,RED 3/4 X 1/2" STL PLT	
13	888833-016	1	ELBOW, MET ST THD M33 X 1 5/16	
14	VARIOUS	1	INSTALLATION Design Item (dwg), ST 1100/1500	

1.23 Tank mount package with dryer—ST4, ST5, ST7

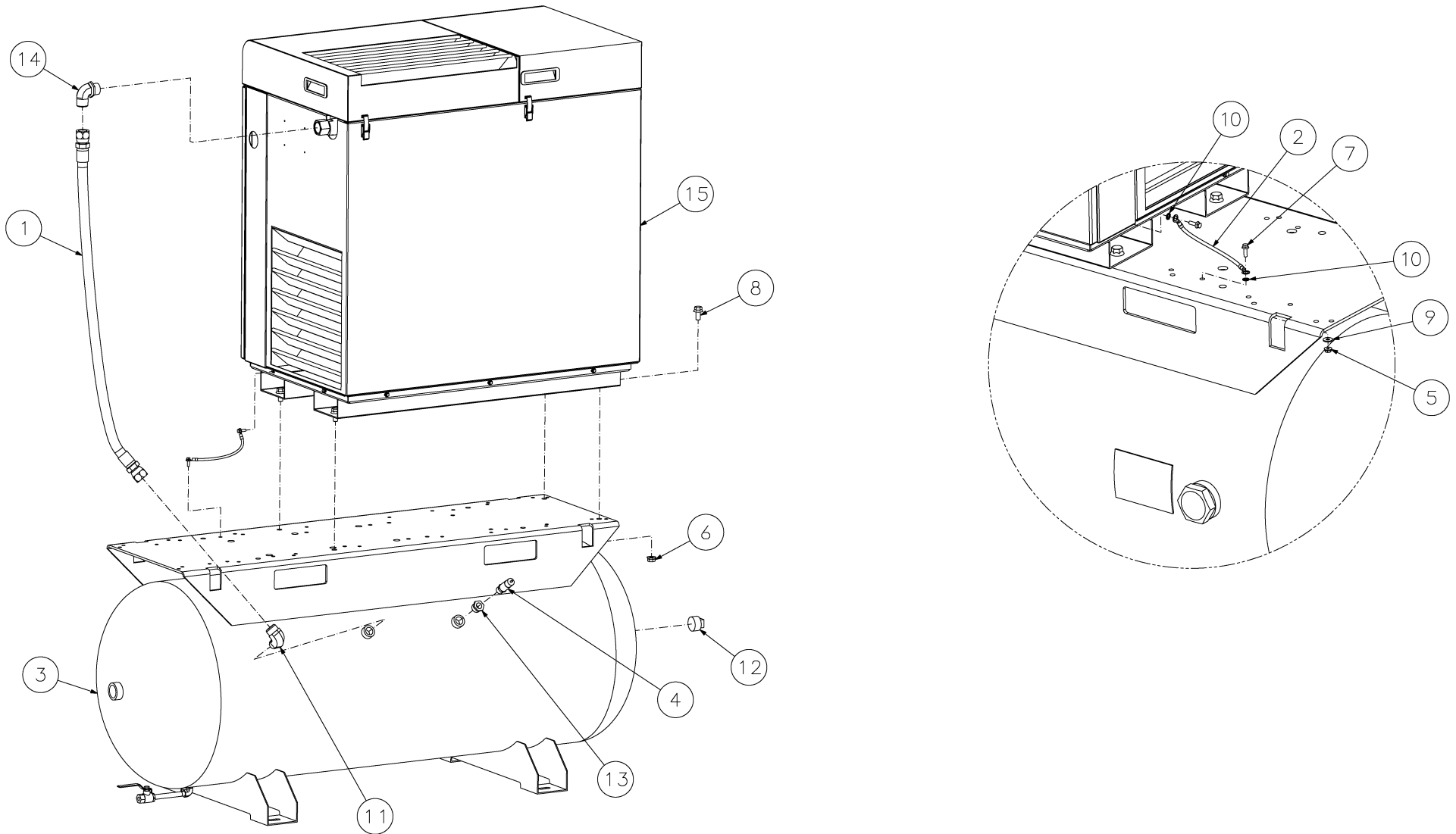


02250243-770 R00

**1.23 Tank mount package with dryer—ST4, ST5, ST7**

Key	Part number	Qty	Description	Notes
1	02250139-775	1	HOSE,HYD PARKRIMP 3/4 X 21	
2	02250157-279	1	WIRE,10 GAGE GROUND BOND 12"	
3	02250231-860	1	TANK,ASSY ES6 80 GAL	
4	250006-938	1	VALVE,RELIEF 1/2" 200#	
5	825304-236	1	NUT, HEX FLGD PLTD 1/4-20	
6	825308-458	4	NUT, HEX FLGD PLTD 1/2-13	
7	829704-100	1	SCREW, HX SER WASH 1/4 X 1"	
8	829708-100	4	SCREW, HX SER WASH 1/2 X 1"	
9	838204-071	1	WASHER, PL-B REG PLTD 1/4"	
10	838404-028	2	WASHER, LOCK EXT TOOTH 1/4"	
11	860212-075	1	ELBOW, 37FL 90M 3/4 X 3/4"	
12	866900-050	1	PLUG,PIPE 1 1/4" 3000# STL PLT	
13	867103-020	1	BUSHING,RED 3/4 X 1/2" STL PLT	
14	888827-012	1	ELBOW,MET ST THD M27 X 1 1/16	
15	VARIOUS	1	SHOPTEK 400/500/700	

### 1.24 Tank mount package with dryer—ST11, ST15

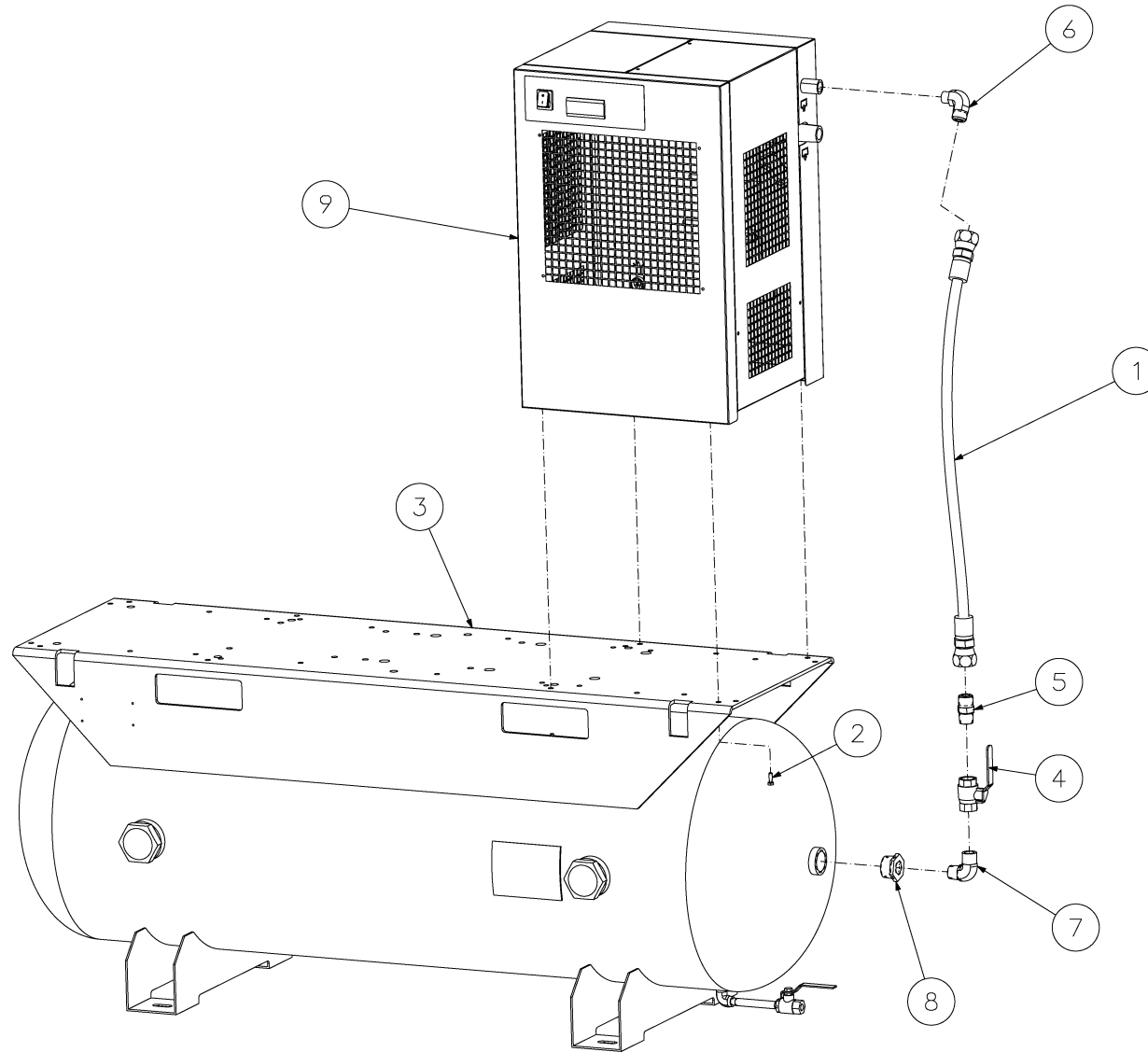


02250243-771 R00

**1.24 Tank mount package with dryer—ST11, ST15**

Key	Part number	Qty	Description	Notes
1	02250143-277	1	HOSE,HYD PARKRIMP 1" X 44"	
2	02250157-279	1	WIRE,10 GAGE GROUND BOND 12"	
3	02250231-861	1	TANK,ASSY ES6 120 GAL	
4	250006-938	1	VALVE,RELIEF 1/2" 200#	
5	825304-236	1	NUT, HEX FLGD PLTD 1/4-20	
6	825308-458	4	NUT, HEX FLGD PLTD 1/2-13	
7	829704-100	1	SCREW, HX SER WASH 1/4 X 1"	
8	829708-100	4	SCREW, HX SER WASH 1/2 X 1"	
9	838204-071	1	WASHER, PL-B REG PLTD 1/4"	
10	838404-028	2	WASHER, LOCK EXT TOOTH 1/4"	
11	860216-075	1	ELBOW, 37FL 90M 1 X 3/4"	
12	866900-050	2	PLUG,PIPE 1 1/4" 3000# STL PLT	
13	867103-020	1	BUSHING,RED 3/4 X 1/2" STL PLT	
14	888833-016	1	ELBOW, MET ST THD M33 X 1 5/16	
15	VARIOUS	1	SHOPTEK 1100/1500	

### 1.25 Dryer option (SRHT20/30/40)—ST4, ST5, ST7

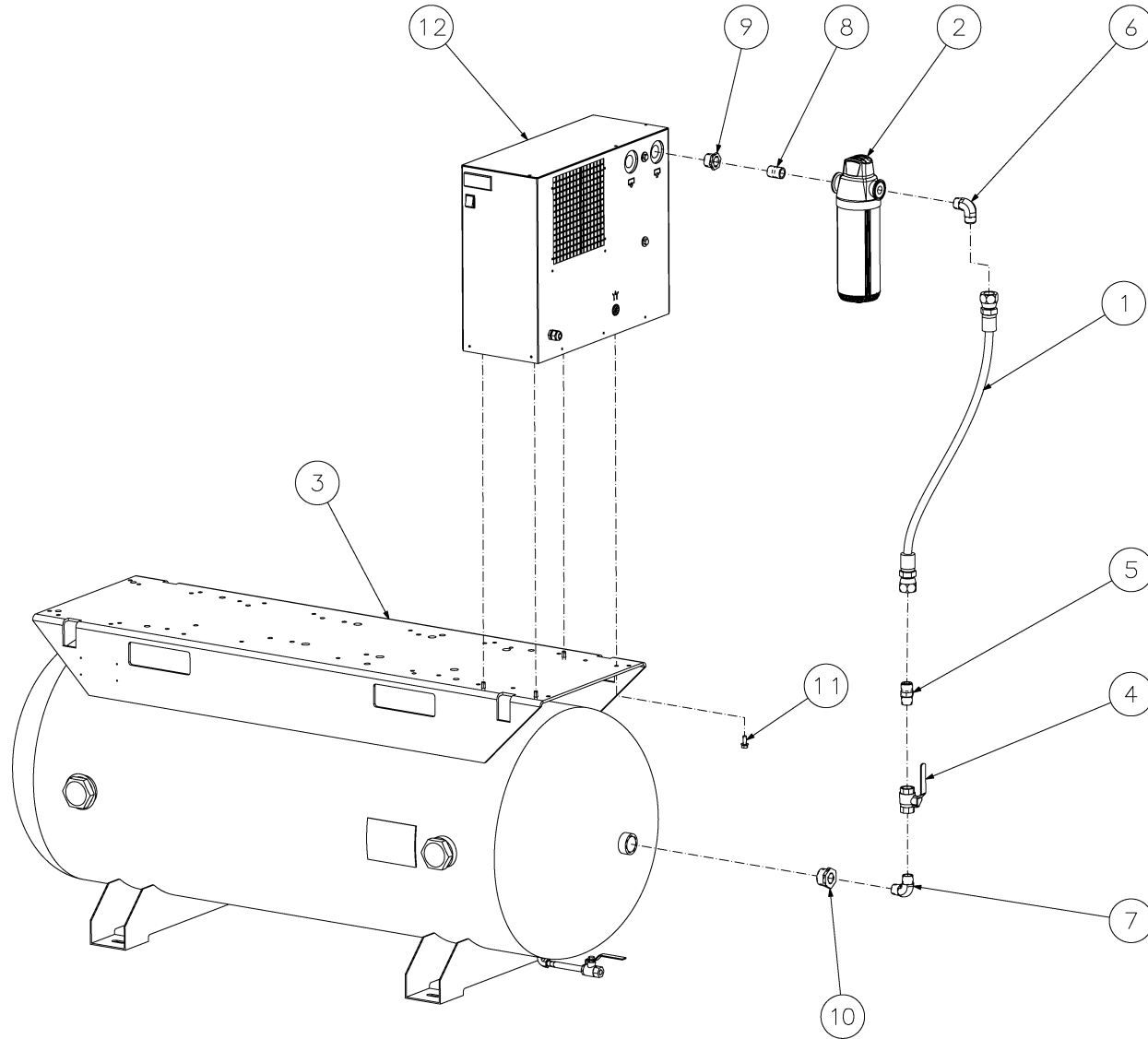


02250232-918 R00

**1.25 Dryer option (SRHT20/30/40)—ST4, ST5, ST7**

Key	Part number	Qty	Description	Notes
1	02250139-776	1	HOSE, HYD PARKRIMP 3/4 X 32	
2	02250212-838	4	CAPSCREW, HEX 8.8 M6 X 18MM PLT	
3	02250231-860	1	TANK, ASSY ES6 80 GAL	
4	047118	1	VALVE, BALL 3/4 NPT	
5	860112-075	1	CONNECTOR, 37FL/MPT 3/4 X 3/4"	
6	860212-050	1	ELBOW, 37FL 90M 3/4 X 1/2"	
7	860512-075	1	ELBOW, PIPE 90M 3/4 X 3/4"	
8	867105-030	1	BUSHING, RED 1 1/4 X 3/4" STL PLT	
9	02250242-243	1	DRYER, SRHT20 AC115VT	
9	02250242-245	1	DRYER, SRHT30 AC115VT	
9	02250242-246	1	DRYER, SRHT40 AC115VT	

1.26 Dryer option (FX65F/SRT60/80)—ST11, ST15

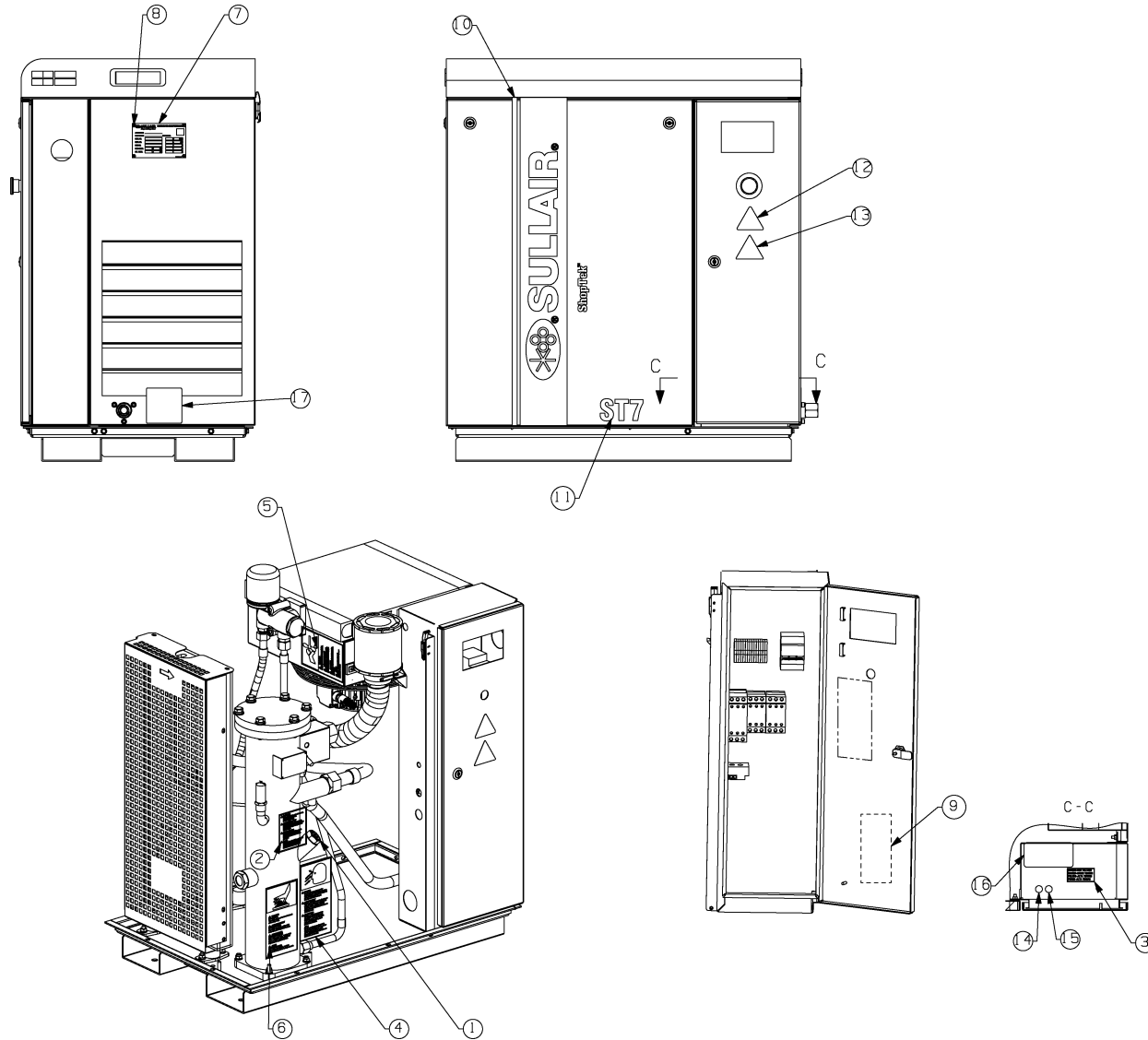


02250232-919 R01

**1.26 Dryer option (FX65F/SRT60/80)—ST11, ST15**

Key	Part number	Qty	Description	Notes
1	02250139-776	1	HOSE,ASSY 3/4 X 32	
2	02250193-416	1	FILTER,FXF-65 3/4" NPT	
3	02250231-861	1	TANK,ASSY ES6 120 GAL	
4	047118	1	VALVE,BALL 3/4 NPT	
5	860112-075	1	CONNECTOR, 37FL/MPT 3/4 X 3/4"	
6	860212-075	1	ELBOW, 37FL 90M 3/4 X 3/4"	
7	860512-075	1	ELBOW, PIPE 90M 3/4 X 3/4"	
8	866412-000	1	NIPPLE,PIPE XS 3/4 X CLOSE PLT	
9	867104-030	1	BUSHING,RED 1 X 3/4" STL PLT	
10	867105-030	1	BUSHING,RED 1 1/4 X 3/4" STL PLT	
11	882608-020	4	SCREW, HEX SER WASHER M8 X 20	
12	02250242-241	1	DRYER,SRT60 AC115VT	
12	02250242-242	1	DRYER,SRT80 AC115VT	

1.27 Decal location, base machine—ST4, ST5, ST7

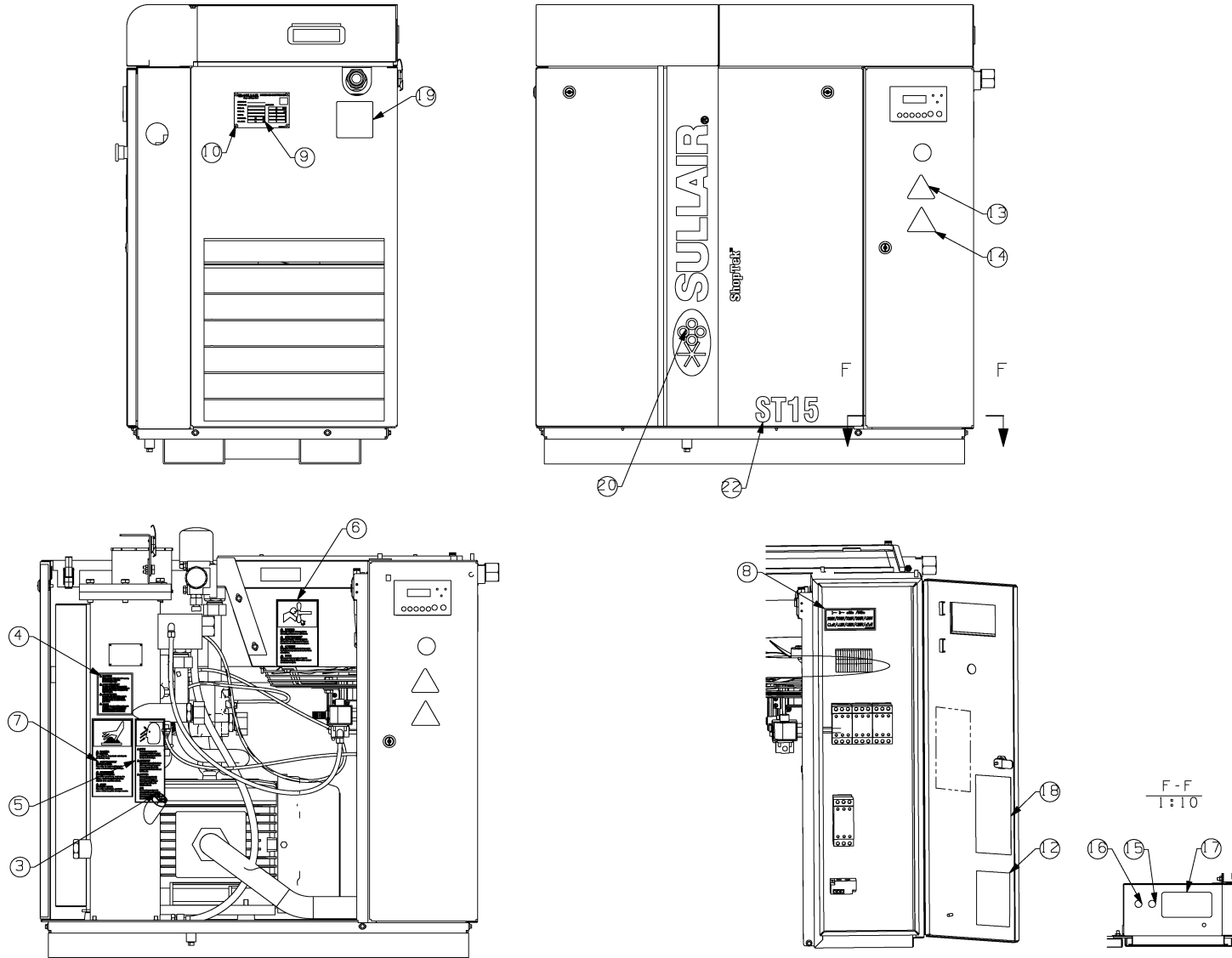


88292019-446 R00

**1.27 Decal location, base machine—ST4, ST5, ST7**

Key	Part number	Qty	Description	Notes
1	88290018-248	1	DECAL,FLUID SULLUBE	
2	02250176-433	1	DECAL,WRN MIXING FLUID UNIV	
3	02250176-435	1	DECAL,DANGER HI-VOLTAGE UNIV	
4	02250176-436	1	DECAL,WRN COMP OIL FLR CAP UNI	
5	02250176-438	1	DECAL,WRN SEVERE FAN UNIV	
6	02250176-441	1	DECAL,WRN HOT SURFACE UNIV	
7	88290020-517	1	NAMEPLATE,CSA ST4-ST15 SERIES	
	88292016-647	1	NAMEPLATE,CSA ST4-ST15 SERIES	
	88290013-683	1	NAMEPLATE,FOR EXPORT MODEL	
8	88290013-723	4	RIVET,BUSTERPOP DIA3.2 L=8	
9	02250180-370	1	TAG STARTUP ST400-1500 UNIV	
10	88292019-213	1	DECAL,SULLAIR ST4-7	
11	88292019-434	1	DECAL,SULLAIR ST7	
	88292019-503	1	DECAL,SULLAIR ST5	
	88292019-504	1	DECAL,SULLAIR ST4	
12	02250229-398	1	DECAL,WRNG REMOTELY CONTROLLED	
13	02250229-399	1	DECAL,WRNG ELECTRICAL SHOCK	
14	02250075-045	1	DECAL,PROTECTIVE EARTH GROUND	
15	02250075-540	1	DECAL,PE DESIGNATION	
16	042218	1	DECAL,DANGER HI VOLTAGE	
17	02250171-797	1	DECAL, DO NOT BREATH COMP AIR	

1.28 Decal location, base machine—ST11, ST15



88292019-445 R00

**1.28 Decal location, base machine—ST11, ST15**

Key	Part number	Qty	Description	Notes
1	02250176-177	1	DECAL,ST1100 BLACK	ST1100
2	02250059-056	1	TAG,REM SHPG STUDS ST1100-1500	
3	88290018-248	1	DECAL,FLUID SULLUBE	
4	02250176-433	1	DECAL,WRN MIXING FLUID UNIV	
5	02250176-436	1	DECAL,WRN COMP OIL FLR CAP UNI	
6	02250176-438	1	DECAL,WRN SEVERE FAN UNIV	
7	02250176-441	1	DECAL,WRN HOT SURFACE UNIV	
8	88290016-067	1	DECAL,VOLTAGE WAN COMPONENT	
9	88290020-517	1	NAMEPLATE,CSA ST4-ST15 SERIES	230/460/575V,FOR CSA
	88292016-647	1	NAMEPLATE,CSA ST4-ST15 SERIES	208-230/460/575V,FOR CSA
	88290013-683	1	NAMEPLATE,FOR EXPORT MODEL	
10	88290013-723	4	RIVET,BUSTERPOP DIA3.2 L=8	
11	02250184-532	1	TAG,REM SHPG STUDS ST1100-1500	
12	02250180-370	1	TAG,STRTUP ST400-1500 UNIV	
13	02250229-398	1	DECAL,WRNG REMOTELY CONTROLLED	
14	02250229-399	1	DECAL,WRNG ELECTRICAL SHOCK	
15	02250075-045	1	DECAL,PROTECTIVE EARTH GROUND	
16	02250075-540	1	DECAL,PE DESIGNATION	
17	042218	1	DECAL,DANGER HI VOLTAGE	
18	02250177-320	1	DECAL,WRN GROUND FAULT UNIV	
19	02250171-797	1	DECAL, DO NOT BREATH COMP AIR	
20	88292019-435	1	DECAL,SULLAIR ST11-15	
21	88292019-621	1	DECAL,SULLAIR ST11	
22	88292019-622	1	DECAL,SULLAIR ST15	

**Notes:**





**Sullair, LLC**

1 Sullair Way  
Michigan City, IN 46360 USA

[www.sullair.com](http://www.sullair.com)

1-800-SULLAIR (USA only)

1-219-879-5451 (non-USA)