

# CBNA HI/LOW GEAR PUMPS

## General Description

The CBNA gear pump consists of a big displacement, low pressure pump and a small displacement, high pressure pump, a check valve as well as a relief valve. When working at the pressure lower than the relief pressure, both big and small pump output flow. While working at a higher pressure, only small pump outputs flow, which highly reduces the power consumption. The CBNA pump is widely used in log splitter, press, machine tools.

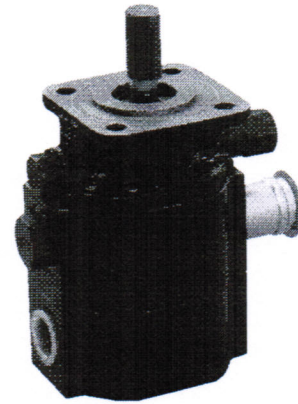
## Order Code

CBNA - \* / \*

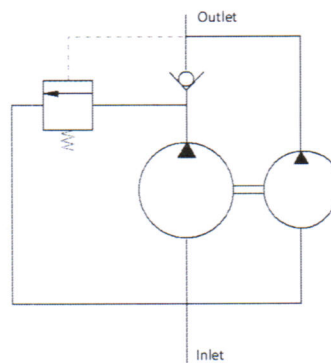
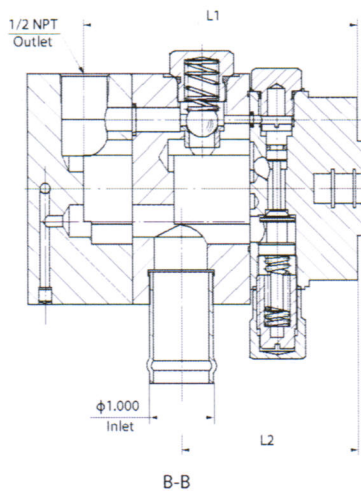
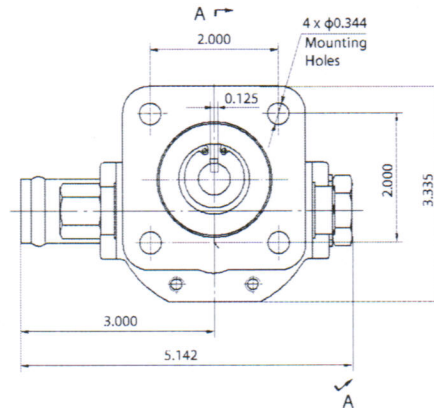
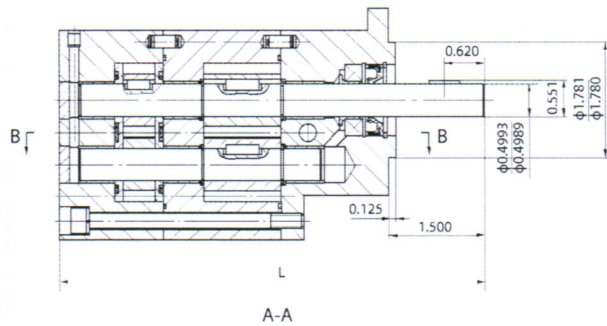
A	Aluminium	Housing Material
omit	Cast iron	

6.3cc/r-13cc/r (0.3880in <sup>3</sup> /r-0.7944in <sup>3</sup> /r)	Low Pressure Displacement in cc/r
---	--------------------------------------

High Pressure Displacement in cc/r	1.6cc/r-4.2cc/r (0.1056in <sup>3</sup> /r-0.2648in <sup>3</sup> /r)
---------------------------------------	--



## Outline Dimension



Hydraulic Schematic

# Technical Data

Model	Flow (GPM)	Displacement (in <sup>3</sup> /r)		Pressure (PSI)		Speed (RPM)	Dimension (in)		
		Hi Pre.	Low Pre.	Unload	Work		L	L1	L2
CBNA-6.3/2.1	8	0.1324	0.3880	Range: 400-900  Preset: 650	3000	3600	6.07	3.75	2.41
CBNA-6.3/3.0	8.5	0.1940	0.3880				6.21	3.75	2.41
CBNA-6.3/3.6	9	0.2239	0.3880				6.27	3.90	2.41
CBNA-8.8/1.6	10	0.1056	0.5387				6.37	4.08	2.74
CBNA-8.8/2.1	10.2	0.1324	0.5387				6.40	4.08	2.74
CBNA-8.8/3.0	10.5	0.1940	0.5387				6.54	4.08	2.74
CBNA-8.8/3.6	11	0.2239	0.5387				6.61	4.23	2.74
CBNA-8.8/4.2	11.5	0.2648	0.5387				6.70	4.23	2.74
CBNA-10.9/2.1	12	0.1324	0.6705				6.70	4.37	3.03
CBNA-10.9/3.0	12.5	0.1940	0.6705				6.83	4.37	3.03
CBNA-10.9/3.6	13	0.2239	0.6705				6.90	4.53	3.03
CBNA-10.9/4.2	13.5	0.2648	0.6705				6.99	4.53	3.03
CBNA-13/3.0	15.4	0.1940	0.7944				7.11	4.80	3.31
CBNA-13/4.2	16.4	0.2648	0.7944				7.27	4.80	3.31

## Performance Curve(@3600RPM,N46 Oil)

