

Specification

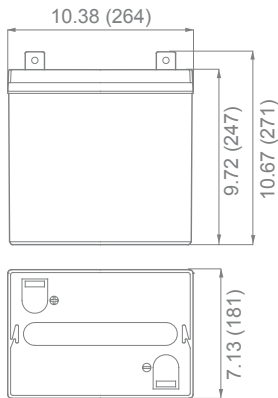
Nominal Voltage	6 volts		
Nominal Capacity	77° F (25° C)		
20-hr. (10.0A)	200 Ah		
10-hr. (18.6A)	186 Ah		
5-hr. (34.0A)	170 Ah		
1-hr. (120A)	120 Ah		
Approximate Weight	62.39 lbs (28.3 kgs)		
Internal Resistance (approx.)	4Ω		
Shelf Life (% of normal capacity at 68° F (20° C)			
3 Months	6 Months	12 Months	
91%	83%	64%	
Temperature Dependency of Capacity	(20 hour rate)		
104° F (40°C)	77° F (25°C)	32° F (0°C)	5° F (-15°C)
102%	100%	85%	65%
AGM Operational Temperature			
Charge	32°F to 104°F (0°C to 40°C)		
Discharge	5°F to 113°F (-15°C to 45°C)		
AGM Storage Temperature	5°F to 104°F (-15°C to 40°C)		



Due to continuous improvements to our products, product may vary slightly from depiction.

Charge Method (Constant Voltage)	
Cycle Use (Repeating Use)	
Initial Current	40 A or smaller
Control Voltage	7.1 - 7.2 V
Float Use	
Control Voltage	6.6 - 6.7 V

Physical Dimensions: in (mm)

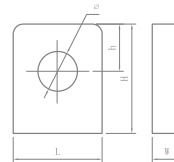


L: 10.38 in (264 mm)
W: 7.13 in (181 mm)
H: 9.72 in (247 mm)
TH: 10.67 in (271 mm)

Tolerances are +/- 0.04 in. (+/- 1 mm) and +/- 0.08 in. (+/- 2mm) for height dimensions. All data subject to change without notice.

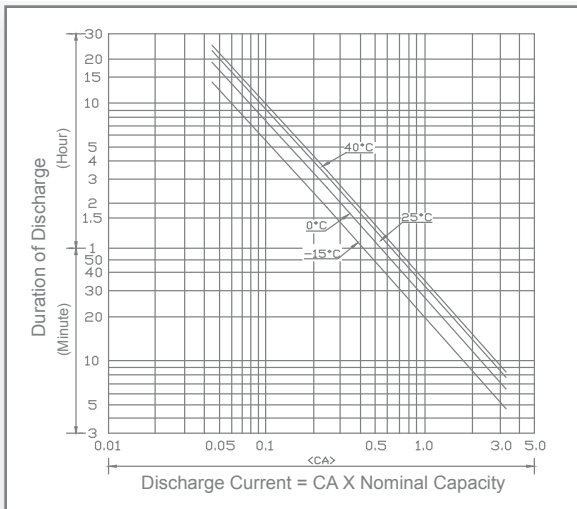
Terminals

L Series (L Type Terminal)

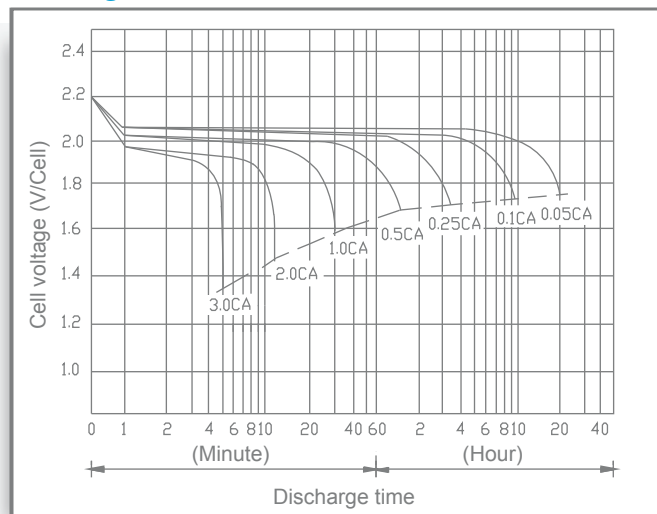


Dimension Type	L	W	H	h	∅
L4	26.5 mm 1.04 in	8.00 mm 0.32 in	24.5 mm 0.97 in	12.0 mm 0.47 in	9.00 mm 0.35 in

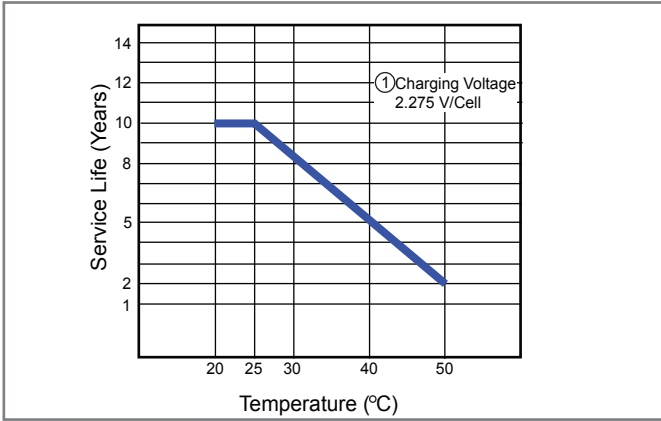
Discharge Time vs. Discharge Current



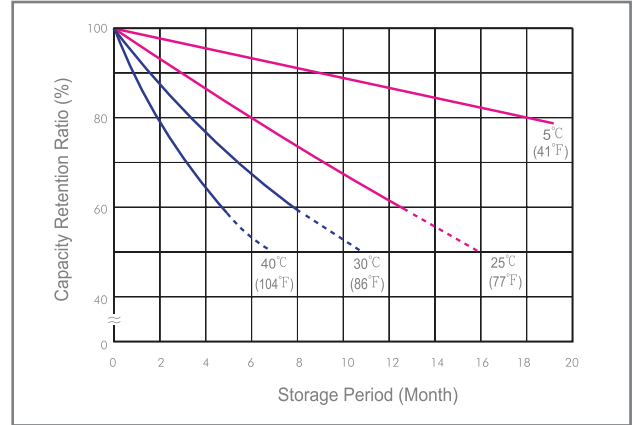
Discharge Characteristics



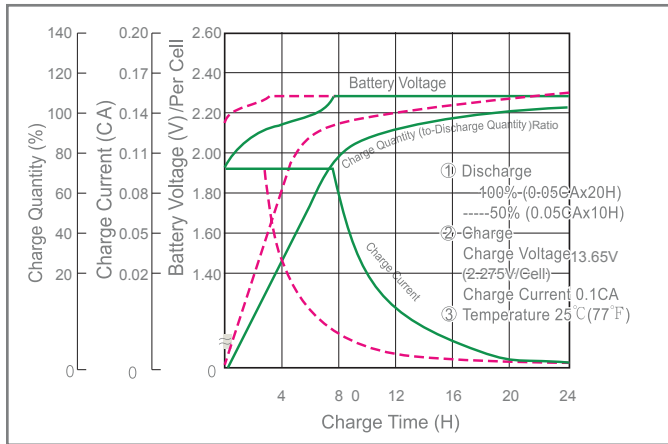
Trickle (or Float) Service Life



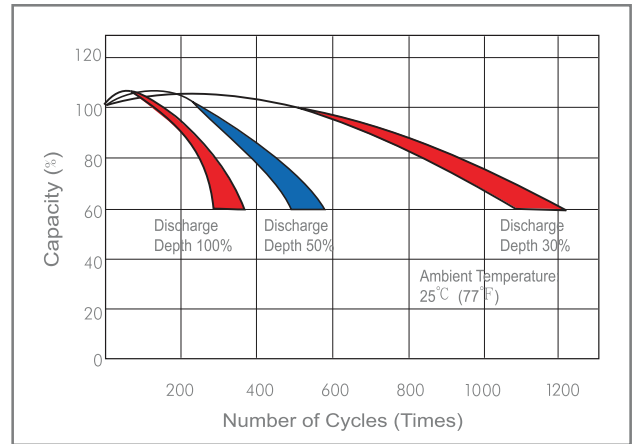
Capacity Retention Characteristic



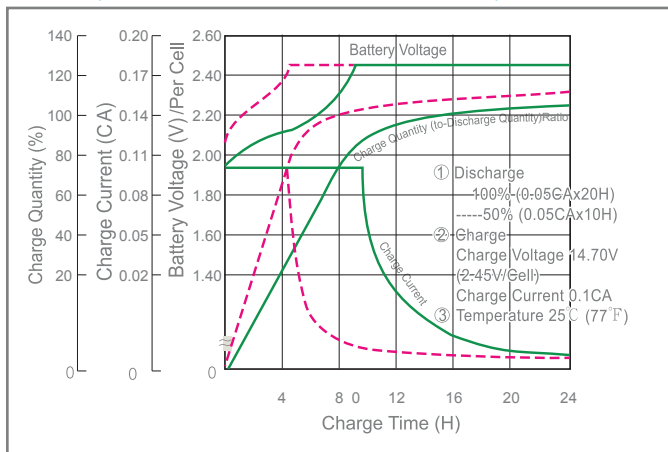
Battery Voltage and Charge Time for Standby Use



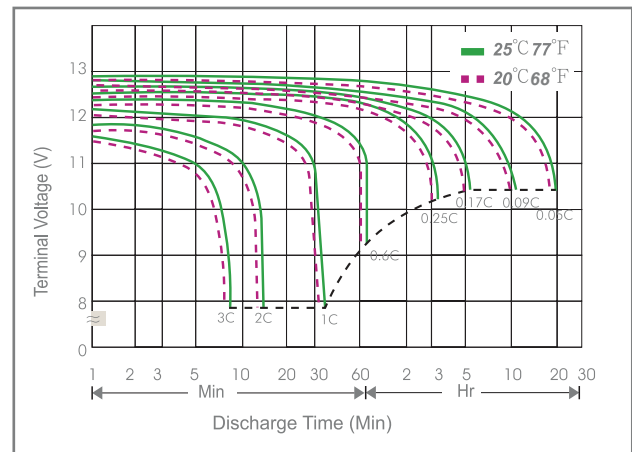
Cycle Service Life



Battery Voltage and Charge Time for Cycle Use



Terminal Voltage (V) and Discharge Time



Charge Current & Final Discharge Voltage

Application	Charge Voltage (V/Cell)			Max. Charge Current	Final Discharge Voltage V/Cell	Discharge Current (A)
	Temperature	Set Point	Allowable Range			
Cycle Use	25°C (77°F)	2.38	2.37~2.40	0.20C	1.75	0.2C > (A)
Standby	25°C (77°F)	2.22	2.20~2.23		1.70	0.2C < (A) < 0.5C
					1.65	0.5C < (A) < 1.0
					1.60	(A) > 1.0C