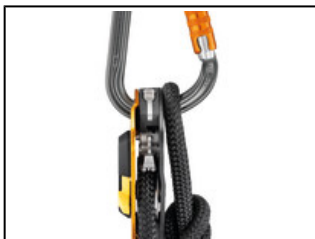


<b>Universe</b>	Professional
<b>Type</b>	Verticality
<b>Category</b>	Connectors
<b>Subcategory</b>	Light carabiners

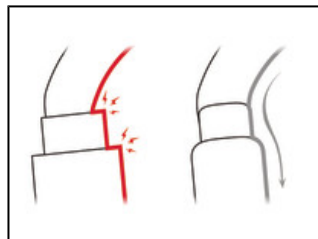


## WILLIAM

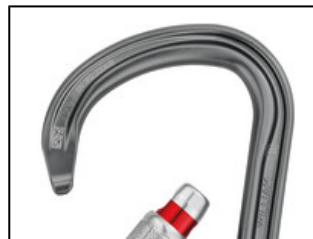
The lightweight WILLIAM large-capacity asymmetrical carabiner is made of aluminum. It has a pear shape that is practical for easily connecting multiple items. Its fluid interior design and Keylock system facilitate handling. The WILLIAM carabiner is available in three locking systems: automatic TRIACT-LOCK or BALL-LOCK, or the manual SCREW-LOCK. WILLIAM can be used with the CAPTIV bar to favor positioning of the carabiner along the major axis, to limit the risk of it flipping and to keep it integrated with the device.



The WILLIAM has an asymmetrical pear shape, with a large capacity for attaching multiple elements, and a large gate opening to facilitate their installation.



Fluid interior design of WILLIAM carabiners limits the risk of having a catch point and facilitates rotation of the carabiner.



The WILLIAM has an H cross-section that ensures an optimal strength/weight ratio and protects the markings from abrasion.



To facilitate equipment checks, SCREW-LOCK manual locking carabiners have a red band that is visible only when the carabiner is not locked.

---

**Short Description** Lightweight asymmetrical large-capacity carabiner

---

**Selling Points**

- Pear shape offers a large capacity and wide opening:
  - facilitates connection of multiple items
  - allows a Munter hitch to be easily created in case of retreat
- Aluminum carabiner is light, reducing the weight of equipment the worker at height needs to carry
- Easier handling:
  - fluid interior design limits the risk of having a catch point and facilitates rotation of the carabiner
  - Keylock system to avoid any involuntary snagging of the carabiner
- H-shaped cross-section:
  - ensures an improved strength-to-weight ratio
  - protects markings from abrasion
- Available in three different locking systems:
  - TRIACT-LOCK: automatic locking with triple-action gate opening
  - BALL-LOCK: automatic locking with triple-action gate opening, with lock indicator
  - SCREW-LOCK: the manual screw-lock with red band provides a visual warning when the carabiner is unlocked
- Also available in black (TRIACT-LOCK and SCREW-LOCK versions) and gold (TRIACT-LOCK and BALL-LOCK versions)


---

**Specification**

- Material(s): aluminum
  - Certification(s): CE EN 362, EAC, NFPA 1983 Technical Use
-

Specifications by reference

Reference(s)	M36A TL	M36A BL	M36A SL	M36A TLN
				
Weight	90 g	90 g	85 g	90 g
Locking system	TRIACT-LOCK	BALL-LOCK	SCREW-LOCK	TRIACT-LOCK
Color(s)	gray	gray	gray	black
Major axis strength	27 kN	27 kN	27 kN	27 kN
Minor axis strength	8 kN	8 kN	8 kN	8 kN
Open gate strength	8 kN	8 kN	8 kN	8 kN
Gate opening	27 mm	27 mm	28 mm	27 mm
Made in	FR	FR	FR	FR
Guarantee	3 years	3 years	3 years	3 years
Packing	1	1	1	1
Case quantity	20	20	20	20
EAN	3342540102354	3342540102316	3342540102361	3342540102330

Reference(s)	M36A SLN	M36A TLY	M36A BLY
			
Weight	85 g	90 g	90 g
Locking system	SCREW-LOCK	TRIACT-LOCK	BALL-LOCK
Color(s)	black	gold	gold
Major axis strength	27 kN	27 kN	27 kN
Minor axis strength	8 kN	8 kN	8 kN
Open gate strength	8 kN	8 kN	8 kN
Gate opening	28 mm	27 mm	27 mm
Made in	FR	FR	FR
Guarantee	3 years	3 years	3 years
Packing	1	1	1
Case quantity	20	20	20
EAN	3342540102347	3342540102323	3342540102309

**Related product(s)**  
 PRO TRAXION  
 JAG TRAXION  
 GEMINI  
 PAW