

KLUTCH[®]

Klutch 100ft. 1in. O.D. Aluminum Core Tubing Master Kit with 3/4in. I.D.

Owner's Manual



⚠ WARNING: Read carefully and understand all ASSEMBLY AND OPERATION INSTRUCTIONS before operating. Failure to follow the safety rules and other basic safety precautions may result in serious personal injury.

Item #103262

READ & SAVE THESE INSTRUCTIONS

Thank you very much for choosing a Klutch product!

For future reference, please complete the owner's record below:

Serial Number/Lot Date Code (if applicable): _____

Purchase Date: _____

Save the receipt, warranty, and this manual. It is important that you read the entire manual to become familiar with this product before you begin using it.

This product is designed for certain applications only. Northern Tool & Equipment is not responsible for issues arising from modification or improper use of this product such as an application for which it was not designed. We strongly recommend that this product not be modified and/or used for any application other than that for which it was designed.

For technical questions, please call **1-800-222-5381**.

Table of Contents

Intended Use.....4

Packaging Contents.....4

Technical Specifications4

Important Safety Information4

Operating Instructions.....6

Maintenance8

Parts Diagram9

Parts List9

Replacement Parts9

Limited Warranty10

Intended Use

The Air Line Delivery Kit is a complete compressed air distribution system that easily installs beneath walls of new construction, or on wall surfaces of existing workshops. With no special installation tools required, you can easily assemble, disassemble, and re-modify your system at any time.

Packaging Contents

- 100ft. of 1in. O.D. HDPE/Aluminum core multilayering tubing with 3/4in I.D. (1)
- Aluminum outlet blocks 3/8in. NPT (3)
- 3/4Tubing male fitting x 1/2in. NPT (3)
- 3/4Tubing male fitting x 3/4 in. NPT (1)
- Mounting clips (20)
- 3/8 in. NPT Drain Valve (3)
- Tee fitting (2)
- Deburr tool (1)
- Cutter (1)
- Teflon Tape (2)

Technical Specifications

Property	Specification
Number of Pieces	37
Tube length	100ft.
Tube Inside Diameter	3/4in.
Tube Outer Diameter	1in.
Max. Pressure	200PSI at 73°F, 160PSI at 140°F
Material	Polyethylene with aluminum core
Temperature Range	-40F to 140°F

Important Safety Information

⚠WARNING

- Read and understand all instructions. Failure to follow all instructions may result in serious injury or property damage.
- The warnings, cautions, and instructions in this manual cannot cover all possible conditions or situations that could occur. Exercise common sense and caution when using this tool. Always be aware of the environment and ensure that the tool is used in a safe and responsible manner.
- Do not allow persons to operate or assemble the product until they have read this manual and have developed a thorough understanding of how it works.
- Do not modify this product in any way. Unauthorized modification may impair the function and/or safety and could affect the life of the product. There are specific applications for which the product was designed.

- Use the right tool for the job. DO NOT attempt to force small equipment to do the work of larger industrial equipment. There are certain applications for which this equipment was designed. It will be a safer experience and do the job better at the capacity for which it was intended. DO NOT use this equipment for a purpose for which it was not intended.
- Industrial or commercial applications must follow OSHA requirements.

⚠WARNING

WORK AREA SAFETY

- Inspect the work area before each use. Keep work area clean, dry, free of clutter, and well-lit. Cluttered, wet, or dark work areas can result in injury. Using the product in confined work areas may put you dangerously close to cutting tools and rotating parts.
- Do not use the product where there is a risk of causing a fire or an explosion; e.g., in the presence of flammable liquids, gases, or dust. The product can create sparks, which may ignite the flammable liquids, gases, or dust.
- Do not allow the product to come into contact with an electrical source. The tool is not insulated and contact will cause electrical shock.
- Keep children and bystanders away from the work area while operating the tool. Do not allow children to handle the product.
- Be aware of all power lines, electrical circuits, water pipes, and other mechanical hazards in your work area. Some of these hazards may be hidden from your view and may cause personal injury and/or property damage if contacted.

⚠WARNING

PERSONAL SAFETY

- Stay alert, watch what you are doing, and use common sense when operating the tool. Do not use the tool while you are tired or under the influence of drugs, alcohol, or medication. A moment of inattention while operating the tool may result in serious personal injury.
- Dress properly. Do not wear loose clothing, dangling objects, or jewelry. Keep your hair, clothing and gloves away from moving parts. Loose clothes, jewelry, or long hair can be caught in moving parts. Air vents on the tool often cover moving parts and should be avoided.
- Wear the proper personal protective equipment when necessary. Use ANSI Z87.1 compliant safety goggles (not safety glasses) with side shields, or when needed, a face shield. Use a dust mask in dusty work conditions. Also use non-skid safety shoes, hardhat, gloves, dust collection systems, and hearing protection when appropriate. This applies to all persons in the work area.

- Do not overreach. Keep proper footing and balance at all times.

⚠CAUTION

PRODUCT USE AND CARE

- Do not force the product. Products are safer and do a better job when used in the manner for which they are designed. Plan your work and use the correct product for the job.
- Check for damaged parts before each use. Carefully check that the product will operate properly and perform its intended function. Replace damaged or worn parts immediately. Never operate the product with a damaged part.
- Store the product when it is not in use. Store it in a dry, secure place out of the reach of children. Inspect the tool for good working condition prior to storage and before re-use.
- Use only accessories that are recommended by the manufacturer for use with your product. Accessories that may be suitable for one product may create a risk of injury when used with another tool. Never use an accessory that has a lower operating speed or operating pressure than the tool itself.
- Keep guards in place and in working order. Never operate the product without the guards in place.

Operating Instructions

⚠WARNING

Do not over tighten. Damage may occur to the pipe if nut is over tightened.

The tool may contain high pressure. Wear safety goggles. Wear gloves that provide protection based on the work materials or to reduce the effects of tool vibration.

Wear protective clothing designed for the work environment and tool.

Non-skid footwear is recommended to maintain footing and balance in the work environment.

Keep hands clear of the exposed rubber portions of the hose.

Never point the air stream or tool at any point of your body, other people or animals. Debris and dust ejected at high speed can cause an injury.

Serious injury or death may occur from inhaling compressed air. The air stream may contain carbon monoxide, toxic vapors or solid particles. Never inhale compressed air directly from the pump or air tool.

Do not let comfort or familiarity with product (gained from repeated use) replace strict adherence to the tool safety rules. If you use this tool unsafely or incorrectly, you can suffer serious personal injury.

Use the correct tool for the job. This tool was designed for a specific function. Do not modify or alter

this tool or use it for an unintended purpose.

Do not use the tool if any parts are damage broken or misplaced. Repair or replace the parts.

Check the air pressure at the terminal point for each tool, to make sure the pressure does not exceed the tool's maximum PSI. Consult the tool's specifications for this rating.

Never yank on the air flow hose system. Keep the air flow hoses away from heat, oil and sharp edges.

Do not use the air flow system to spray corrosive materials, toxic chemicals, fertilizers or pesticides.

Make sure to close or shut off the air supply and drain the remaining air in the system before maintenance and configuration changes.

Use only clean and dry compressed air as a power source. Contaminated or moist air will gradually damage the tool.

Install an in-line shutoff valve or regulator to allow immediate control over the air supply in an emergency, even if a hose is ruptured.

Check the manufacturer's maximum pressure rating for air tools and accessories. Compressor outlet pressure must be regulated to never exceed the maximum pressure rating of the tool (see Specifications). Exceeding the maximum PSI rating can create a bursting hazard, causing injury and property damage.

Attach all accessories properly to the tool before connecting the air supply. A loose accessory may detach or break during operation.

Never use oxygen, combustible gas or any other bottled gas as a power source. Any power source other than an air compressor could cause an explosion and serious personal injury.

Turn OFF the valve and discharge any remaining air pressure after each use or before adjusting the tool.

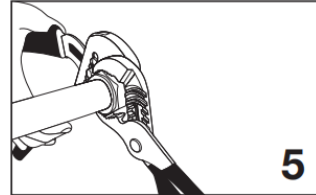
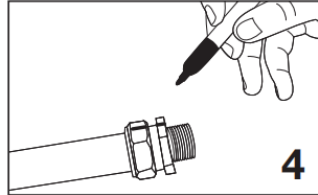
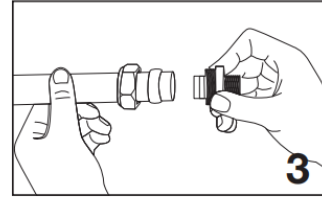
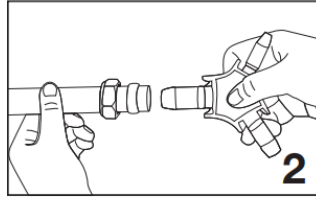
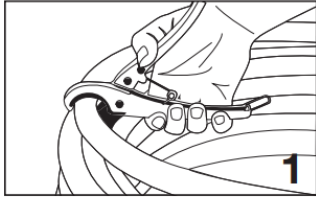
Inspect the air hose for cracks, fraying or other faults before each use. Discontinue use if the air hose is damaged or hissing is heard from the air hose or couplers. Replace the defective air hose.

Do not allow people, mobile equipment or vehicles to pass over the unprotected air hose.

Remove the parts and accessories from the packaging and inspect for damage. Make sure that all items in the Identification Key are included. Your installation may not use all the components in this kit.

Sketch out the layout with measurements to make sure you have enough hose length and components to create the system you want.

1. Cut the tubing square with the cutter tool, rotating wrist. Take time to make sure the cuts are straight and even.
2. Using the deburring tool, insert the correct size plug into the hose. Rotate the tool at least 3 times to Bevel the inside. Remove nut and split ring from fitting and place on tubing.
3. Push the fitting of choice onto the tubing. Make sure shoulder of fitting is fully seated against pipe. If you cannot seat the fitting properly apply soapy water to help this process.
4. Turn the nut finger tight, draw a reference mark on the fitting and nut.
5. Tighten nut with a wrench $\frac{3}{4}$ turn minimum or until tight.



Install an air valve between the compressor and the hose.

Slip plastic tube clips onto the hose and screw the clips to the walls, ceiling or surfaces. Use enough clips to prevent each hose section from sagging.

Test the entire system at low pressure and check for leaks. If there are leaks, check the following:

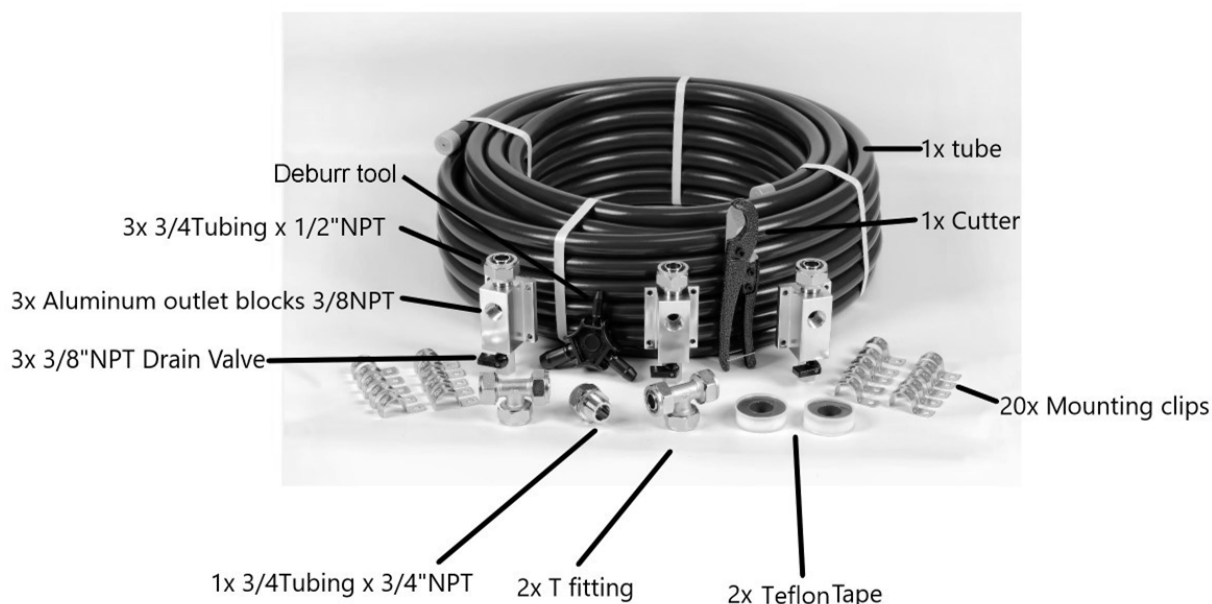
- a. Check that the hose end cut is clean and flat.
- b. Make sure the hose is fully seated.
- c. Make sure the release button is not pressed down.
- d. Replace the component and recheck if needed.

Maintenance

Maintain the product by adopting a program of conscientious repair and maintenance in accordance with the following recommended procedures. It is recommended that the general condition of any tool be examined before it is used. Keep your tool in good repair. Keep all cutting tools sharp and clean. Properly maintained cutting tools with sharp cutting edges are less likely to bind and are easier to control. Keep handles dry, clean, and free from oil and grease. Also refer to the engine manufacturer's instruction manual for additional information about engine maintenance. The following chart is based on a normal operation schedule.

Maintenance Interval	Maintenance Point
Every month	<p>Keep every part clean.</p> <p>Inspect the tool fittings, alignment, hoses and power supply cord periodically. Have damaged or worn components repaired or replaced by an authorized technician. Only use identical replacement parts when servicing.</p>

Parts Diagram



Parts List

Reference	Part Number	Part Description	Quantity
1	1	100ft. 1in. O.D. 3/4in. I.D. Aluminum Core Tubing	1
2	2	Aluminum outlet blocks 3/8in. NPT	3
3	3	3/4Tubing male fitting x 1/2in. NPT	3
4	4	3/4Tubing male fitting x 3/4 in. NPT	1
5	5	Mounting clips	20
6	6	3/8 in. NPT Drain Valve	3
7	7	Tees fitting	2
8	8	Cutter	1
9	9	Deburr tool	1
10	10	Teflon Tape	2

Replacement Parts

- For replacement parts and technical questions, please call Customer Service at **1-800-222-5381**.
- Not all product components are available for replacement. The illustrations provided are a convenient reference to the location and position of parts in the assembly sequence.
- When ordering parts, the following information will be required: item description, item model number, item serial number/item lot date code, and the replacement part reference number.
- The distributor reserves the rights to make design changes and improvements to product lines and manuals without notice.

Limited Warranty

Northern Tool and Equipment Company, Inc. ("We" or "Us") warrants to the original purchaser only ("You" or "Your") that the Klutch product purchased will be free from material defects in both materials and workmanship, normal wear and tear excepted, for a period of **one year** from date of purchase. The foregoing warranty is valid only if the installation and use of the product is strictly in accordance with product instructions. There are no other warranties, express or implied, including the warranty of merchantability or fitness for a particular purpose. If the product does not comply with this limited warranty, Your sole and exclusive remedy is that We will, at our sole option and within a commercially reasonable time, either replace the product or product component without charge to You or refund the purchase price (less shipping). This limited warranty is not transferable.

Limitations on the Warranty

This limited warranty does not cover: (a) normal wear and tear; (b) damage through abuse, neglect, misuse, or as a result of any accident or in any other manner; (c) damage from misapplication, overloading, or improper installation; (d) improper maintenance and repair; and (e) product alteration in any manner by anyone other than Us, with the sole exception of alterations made pursuant to product instructions and in a workmanlike manner.

Obligations of Purchaser

You must retain Your product purchase receipt to verify date of purchase and that You are the original purchaser. To make a warranty claim, contact Us at 1-800-222-5381, identify the product by make and model number, and follow the claim instructions that will be provided. The product and the purchase receipt must be provided to Us in order to process Your warranty claim. Any returned product that is replaced or refunded by Us becomes our property. You will be responsible for return shipping costs or costs related to Your return visit to a retail store.

Remedy Limits

Product replacement or a refund of the purchase price is Your sole remedy under this limited warranty or any other warranty related to the product. We shall not be liable for: service or labor charges or damage to Your property incurred in removing or replacing the product; any damages, including, without limitation, damages to tangible personal property or personal injury, related to Your improper use, installation, or maintenance of the product or product component; or any indirect, incidental or consequential damages of any kind for any reason.

Assumption of Risk

You acknowledge and agree that any use of the product for any purpose other than the specified use(s) stated in the product instructions is at Your own risk.

Governing Law

This limited warranty gives You specific legal rights, and You also may have other rights which vary from state to state. Some states do not allow limitations or exclusions on implied warranties or incidental or consequential damages, so the above limitations may not apply to You. This limited warranty is governed by the laws of the State of Minnesota, without regard to rules pertaining to conflicts of law. The state courts located in Dakota County, Minnesota shall have exclusive jurisdiction for any disputes relating to this warranty.

KLUTCH[®]

Distributed by:

Northern Tool & Equipment Company, Inc.

Burnsville, Minnesota 55306

www.northerntool.com

Made in Vietnam