

GoldenBleu™

Environmental Technology Food Safety Disinfection

Electrostatic Battery Powered ULV Cold Fogger

Operation Manual



Dear customer:

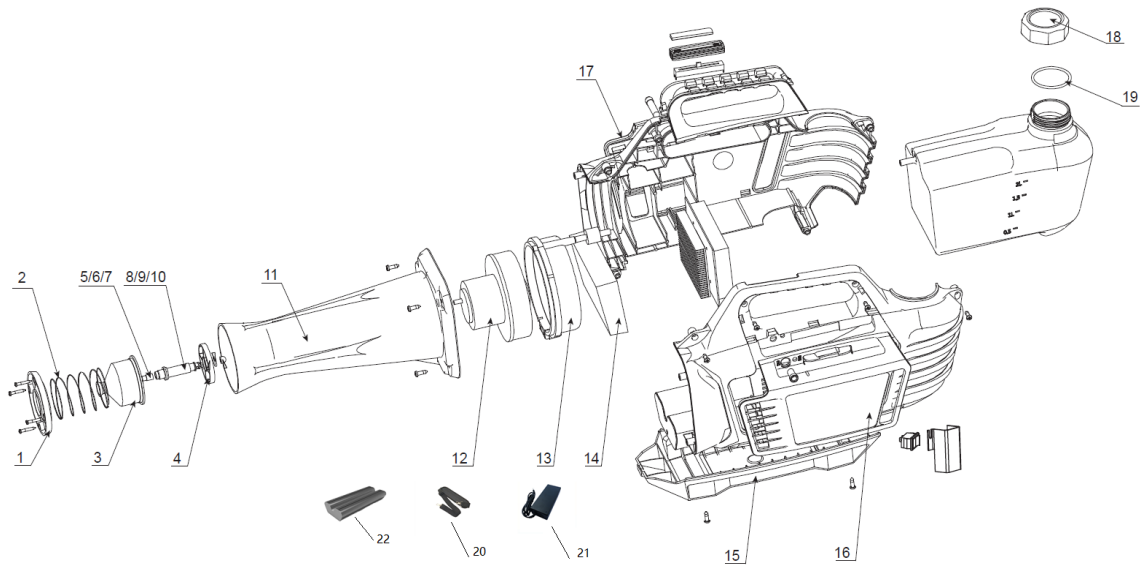
Thank you for choosing our battery ULV cold fogger. Please read the operation manual carefully before use the product, strictly abide by the safety operation rules, in order to prevent product failure from affecting your normal use or cause unnecessary losses. We hope that you can use this product safely, correctly, and efficiently with this operation manual, maintain the best operation condition of the product to improve the application efficiency of the products.

We are committed to the constant optimization and improvement of product design. We will appreciate for your valuable suggestions or feedback.

CONTENTS

I Illustrated parts	3
II Technical parameters	4
III Basic working principle	5
IV Operation instructions	5
V Operation instructions for Replacing	
Nozzles	6-14
VI Operation instructions for Switches	14-18
VII Battery operation and maintenance methods	19
VIII Common Failures and Trouble Shooting	20
VIII Attention	21
VIII Warranty Service	22
VIII Packing List	23
Limited Warranty	24-25

I Illustrated parts



Part#	Description	Q'ty
1	Nozzle cover	1
2	Spring	1
3	sprayer cover	1
4	Bracket for nozzle	1
5	SF-1, 2mm	1
6	SF-1, 5mm	1
7	SF-1, 8mm	1
8	Valve core-1	1
9	Valve core-2	1
10	Valve core-3	1
11	rectifier	1
12	DC motor	1
13	Motor seal sleeve	1
14	filter	1
15	battery cover	1
16	Side plate-left	1
17	Side plate-right	1
18	Tank cap	1
19	O-ring	1
20	Strap	1
21	Charger	1
22	Battery	1

II Technical parameter

parameter Item#	#101519
Rated Voltage	DC24V
Battery capacity	8AH
Rated power	240W
Spray volume	0.02-0.04gallon/min (adjustable)
Droplet size	0.03in. < 40 μ m , 0.039in. < 60 μ m , 0.06in. > 60 μ m
Spray distance(calm wind)	16—26ft.
Tank capacity	0.66 gallon
Charging time	5h
Working time	60min
Packing size (LXWXH)	27.9x11.4x7.87in.

III Basic working principle

The Battery-Operated ULV Cold Fogger use high-power super speed brushless DC motor, the high speed motor can drive the fan blade to produce high-speed rotary cutting airflow, at the same time, pressurized to the solution tank to make the solution delivery to the micro nozzle according to constant flow rate and high speed air flow, under the common action of high-speed rotary cutting airflow and special structure of nozzle, the liquid is broken into tiny fog particles.

IV Operation instructions

1. Fill the solution or disinfectant into the tank and fasten the tank cap.

Attention : The solution doesn't exceed maximum capacity 2L (Figure 1).

2. First, turn on inside switch.

3. Turn on the power switch on the side of the device(Figure2) , confirm the battery capacity is enough.



(Figure 1)



(Figure2)

4. When finish spraying the solution, remove the residual liquid and clean the tank with water, add a little water in the tank and adjust the regulator to max. Delivery, turn on the machine, spray 1-2mins water to avoid the solution block and corrode the nozzle and piping.

V Operations instructions for replacing the Nozzles:

1. Use a screwdriver to open the four screws of the cover plate.



2. Take out the cover plate and spring.



3. Take out the nozzle cover



4. Then you will see the inside nozzle.



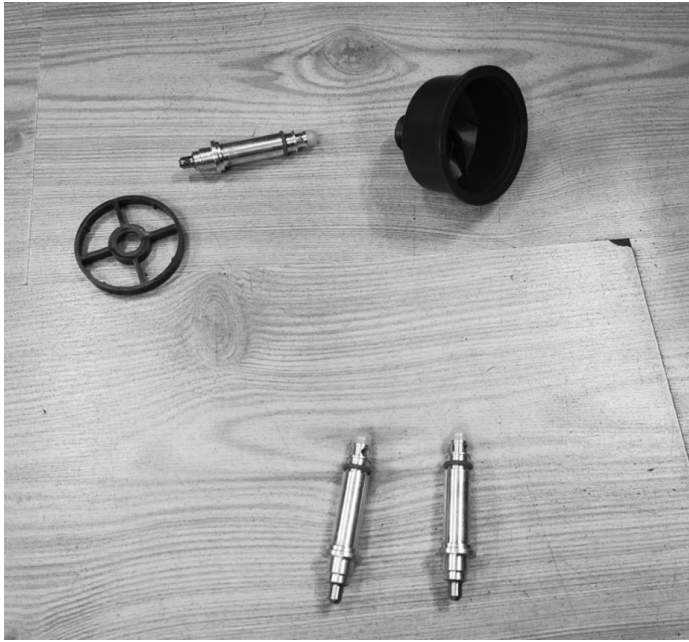
5. Take out the nozzle from the cover.



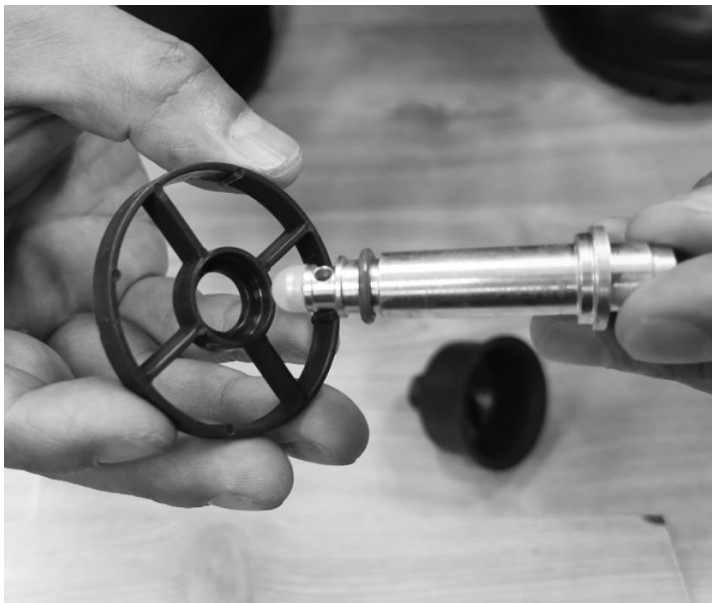
6. Make the nozzle separate from the round ring.



7. Replace with another needed nozzle.



8. Insert the replaced nozzle into the round ring.



9. After done, it will be like as below.



10. Install the O-ring.



11. Connect replaced nozzle with the cover as below.



12. The status of nozzle with cover is like below.



13. Cover the nozzle and make it tightened.



14. Install the spring and cover.



15. Tighten 4 related bolts.



16. Please check if there is any water leaking.



VI Operation Instructions for Switches:

1. Open the right side cover plate.



2. Button the switch inside.



3. Close the right side cover plate.



4. Please turn on the working Switch, then it works.



5. When charging, put one side into the charging port, make the other side connected with the plug.





6. Replace the spray liquid by loosening the cover. Inject enough liquid, then cover it by tightening.



7. Install the belts like below.



VII Battery operation and maintenance methods

For the convenience of customers use continuously, you can choose spare batteries. The battery can be charged in the machine or charged separately.

1. Notice: The charger indicator light will become red when it is charging and turn green when it is full charged.

2. Charging method (when battery is in machine, the machine must be placed in a safe, dry, normal temperature environment when it is charging.) After placing the equipment smoothly, then connect the charger plug and connector on the side of the device, continuously charging until the light becomes green;

VIII Common Failures and Trouble Shooting

1. Failures: Motor don't run

Cause (1): The battery capacity is not enough, the battery is in automatic protection when the power light becomes red.

solution : Check if the battery is adequate.

Cause :(2) The range button not settled.

Solution: adjust it to zero

Cause: (3) Overload operation

Solution: Stop working and put the machine at a ventilated place for 30minutes.

2. Failures : Machine runs but without spraying droplets

Cause: (1) The solution is not enough or no solution.

Solutions : Check and fill more solution into the tank.

Cause: (2) Solution tank cap is not well fastened.

Solution: Fasten the solution cap.

Cause: (3) Spray nozzle blockage.

Solution: Clean the nozzle.

VIII Attentions

1. Please make sure the battery capacity is enough before use.

Please charge it when the light becomes red.

2. If the water goes into the machine, make sure it completely dry before turn on the switch.

3. The operating ambient temperature of the machine is between 0~40°C. It should not be knocked with heavy object, avoid falling from high place. The customer must use special battery configured by this product. It is forbidden to use other types of batteries to avoid damage to the product.

4. Please don't use it to work when charging.

5. If you leave it unused for a long time, please fully charge the battery.

6. Prohibit using the strong corrosion liquid, the solution should be completely dissolved without impurities, to prevent clogging the pipeline.

7. If the following situations happen, please cut off the power supply immediately.

1) The water gets into machine

2) The motor stops working suddenly.

3) The voice of motor changes obviously.

4) The water tank leaks.

5) The motor is not work or other abnormal conditions happen when turning on.

8. Please cut off the power supply after using and clean the tank promptly. Put it in a safe location to avoid water drenching, direct sunlight, bump and kid's touch.

9. Strictly prohibited to use the machine in the rain. Forbid to plug or unplug with wet hands. The machine should not be stored near any flammable, explosive articles or high temperatures sites.

10. If abnormal condition happens, please contact with us.

Strictly prohibited to disassemble it without authorization.

VIII Warranty Service

1. We provide one year free maintenance for the main components of the equipment.

List of major components:

- 1) Motor
- 2) Electronic control board
- 3) Battery (warranty for liquid leakage, plastic shell cracking, etc. Except for human factors and external damage)
- 4) Charger
- 5) Water tank
- 6) Single Valve
- 7) Nozzle

Parts that are not in the main components list are all warranted for 3 months (except for human factors, external damage and improper use)

2. The below circumstances are exclusive of the warranty service:

- 1) The blockage and damage of equipment because of using strong corrosion liquid.
- 2) The fault and damage because of changing the structure and replacing the parts of equipment privately.
- 3) Do not follow the instructions for use and maintenance.
- 4) Artificial damage caused by improper or overuse.
- 5) Damage caused by irresistible natural forces, such as earthquakes, floods, fires, etc.
- 6) Do not mix different types of chemicals in the tank/reservoir.
- 7) Do not use in wet conditions.
- 8) Turn off power switch before charging.

VIII Packing List

NO.	Item	Specification	QTY	Remarks
1	Battery operated fogger		1	
2	Charger	DC24V 1.8A	1	
3	Screwdriver		1	
4	Straps		1	
5	Filter sponge		1	
6	Nozzles	0.8/1.0/1.5mm	1	0.8mm < 40µm 1.0mm < 60µm 1.5mm > 60µm
7	Sealing ring	8.5*1.8 mm	1	
8	User Manual		1	
9	Product certification		1	

Limited Warranty

Northern Tool and Equipment Company, Inc. ("We" or "Us") warrants to the original purchaser only ("You" or "Your") that the Goldenbleu product purchased will be free from material defects in both materials and workmanship, normal wear and tear excepted, for a period of 6 months from date of purchase. The foregoing warranty is valid only if the installation and use of the product is strictly in accordance with product instructions. There are no other warranties, express or implied, including the warranty of merchantability or fitness for a particular purpose. If the product does not comply with this limited warranty, Your sole and exclusive remedy is that We will, at our sole option and within a commercially reasonable time, either replace the product or product component without charge to You or refund the purchase price (less shipping). This limited warranty is not transferable.

Limitations on the Warranty

This limited warranty does not cover: (a) normal wear and tear; (b) damage through abuse, neglect, misuse, or as a result of any accident or in any other manner; (c) damage from misapplication, overloading, or improper installation; (d) improper maintenance and repair; and (e) product alteration in any manner by anyone other than Us, with the sole exception of alterations made pursuant to product instructions and in a workmanlike manner.

Obligations of Purchaser

You must retain Your product purchase receipt to verify date of purchase and that You are the original purchaser. To make a warranty claim, contact Us at 1-800-222-5381, identify the product by make and model number, and follow the claim instructions that will be provided. The product and the purchase receipt must be provided to Us in order to process Your warranty claim. Any returned product that is replaced or refunded by Us becomes our property. You will be responsible for return shipping costs or costs related to Your return visit to a retail store.

Remedy Limits

Product replacement or a refund of the purchase price is Your sole remedy under this limited warranty or any other warranty related to the product. We shall not be liable for: service or labor charges or damage to Your property incurred in removing or replacing the product; any damages, including, without limitation, damages to tangible personal property or personal injury, related to Your improper use, installation, or maintenance of the product or product component; or any indirect, incidental or consequential damages of any kind for any reason.

Assumption of Risk

You acknowledge and agree that any use of the product for any purpose other than the specified use(s) stated in the product instructions is at Your own risk.

Governing Law

This limited warranty gives You specific legal rights, and You also may have other rights which vary from state to state. Some states do not allow limitations or exclusions on implied warranties or incidental or consequential damages, so the above limitations may not apply to You. This limited warranty is governed by the laws of the State of Minnesota, without regard to

rules pertaining to conflicts of law. The state courts located in Dakota County, Minnesota shall have exclusive jurisdiction for any disputes relating to this warranty.

GoldenBleu™

Distributed by:

Northern Tool & Equipment Company, Inc.

Burnsville, Minnesota 55306

www.northerntool.com

Made in China