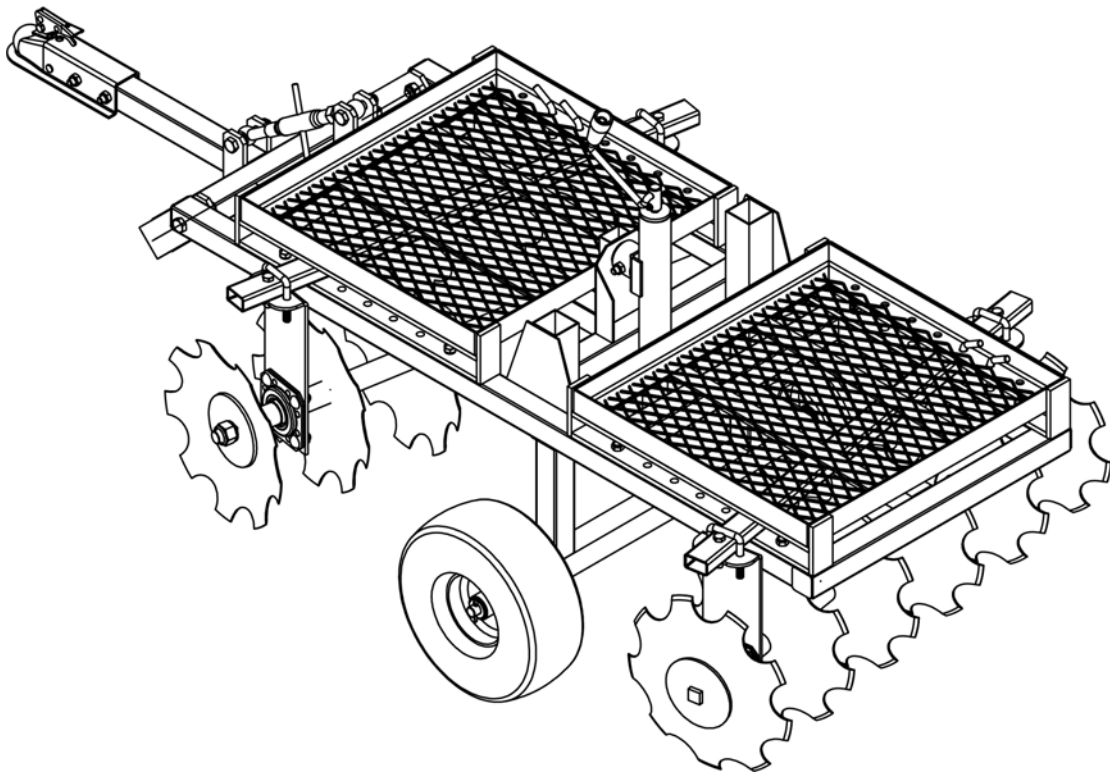




42" ADJUSTABLE ATV DISC

OWNER'S MANUAL



WARNING:

Read carefully and understand all **ASSEMBLY AND OPERATION INSTRUCTIONS** before operating. Failure to follow the safety rules and other basic safety precautions may result in serious personal injury.

Item# ATV-42TDWT

Thank you very much for choosing this product! For future reference, please complete the owner's record below:

Model: ___ATV-42TDWT_____ Purchase Date: _____

Save the receipt, warranty and these instructions. It is important that you read the entire manual to become familiar with this product before you begin using it.

This product is designed for certain applications only. The manufacturer cannot be responsible for issues arising from modification. We strongly recommend this product not be modified and/or used for any application other than that for which it was designed. If you have any questions relative to a particular application, DO NOT use the product until you have first contacted us to determine if it can or should be performed on the product.

For technical questions please call **1-218-943-6296**.

INTENDED USE

This disc cultivator is used to loosen and prepare soil for wildlife food plots, small gardens, row cultivation and yard prep work.

TECHNICAL SPECIFICATIONS

2" Ball Hitch
Twelve-14" Diameter Notched Disc Blades are removable and replaceable.
41" Cutting Width, 5" Cutting Depth
Four working angles for adjusting
1" Square disc axle
Weight tray – 150LB weight capacity

GENERAL SAFETY RULES



WARNING: Read and understand all instructions. Failure to follow all instructions listed below may result in serious injury.



CAUTION: Do not allow persons to operate or assemble this disc until they have read this manual and have developed a thorough understanding of how the disc works.



WARNING: The warnings, cautions, and instructions discussed in this instruction manual cannot cover all possible conditions or situations that could occur. It must be understood by the operator that common sense and caution are factors which cannot be built into this product, but must be supplied by the operator.

SAVE THESE INSTRUCTIONS

WORK AREA

- **Keep work area clean**, free of clutter and well lit. Cluttered and dark work areas can cause accidents.
- **Keep children and bystanders** away while operating a disc. Distractions can cause you to lose control, so visitors should remain at a safe distance from the work area.
- **Be aware of all power lines, electrical circuits**, water pipes and other mechanical hazards in your work area, particularly those hazards below the work surface hidden from the operator's view that may be unintentionally contacted and may cause personal harm or property damage.
- **Be alert of your surroundings**. Using a disc in confined work areas may put you in a dangerous situation.

PERSONAL SAFETY

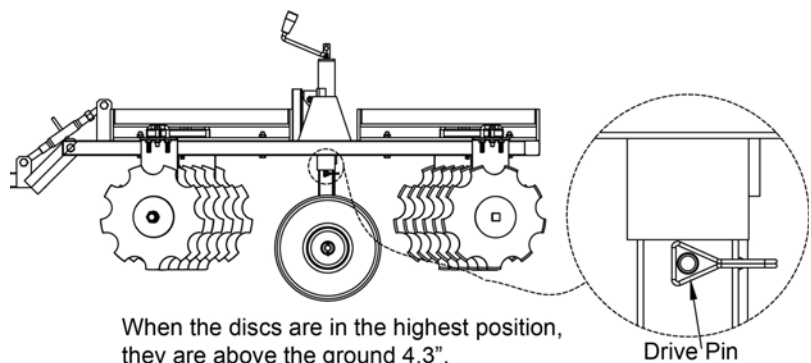
- **Stay alert**, watch what you are doing and use common sense when using a disc. Do not use a disc while you are tired or under the influence of drugs, alcohol or medication. A moment of inattention while operating a disc may result in serious personal injury.
- **Dress properly**. Do not wear loose clothing, dangling objects, or jewelry. Keep your hair, clothing and gloves away from moving parts. Loose clothes, jewelry or long hair can be caught in moving parts.
- **Use safety apparel and equipment**. Use safety goggles or safety glasses with side shields which comply with current national standards, or when needed, a face shield. This applies to all persons in the work area. Also use non-skid safety shoes, hardhat, heavy-duty gloves, and hearing protection when appropriate.

DISC USE AND CARE

- **Do not modify the disc in any way**. Unauthorized modification may impair the function and/or safety and could affect the life of the equipment. There are specific applications for which the disc was designed.
- **Always check for damaged or worn out parts before using the disc**. Broken parts will affect the disc operation. Replace or repair damaged or worn parts immediately.
- **Do not exceed the disc load capacity**.
- **Distribute the load evenly**. Uneven loads may cause the disc to tip, resulting in personal injury to the operator or others.
- **Use the disc on flat and level surfaces** capable of supporting the disc and its maximum load. Pulling or pushing a load on a slanted or uneven surface can result in loss of control.
- **Store idle disc**. When disc is not in use, store it in a secure place out of the reach of children. Inspect it for good working condition prior to storage and before re-use.

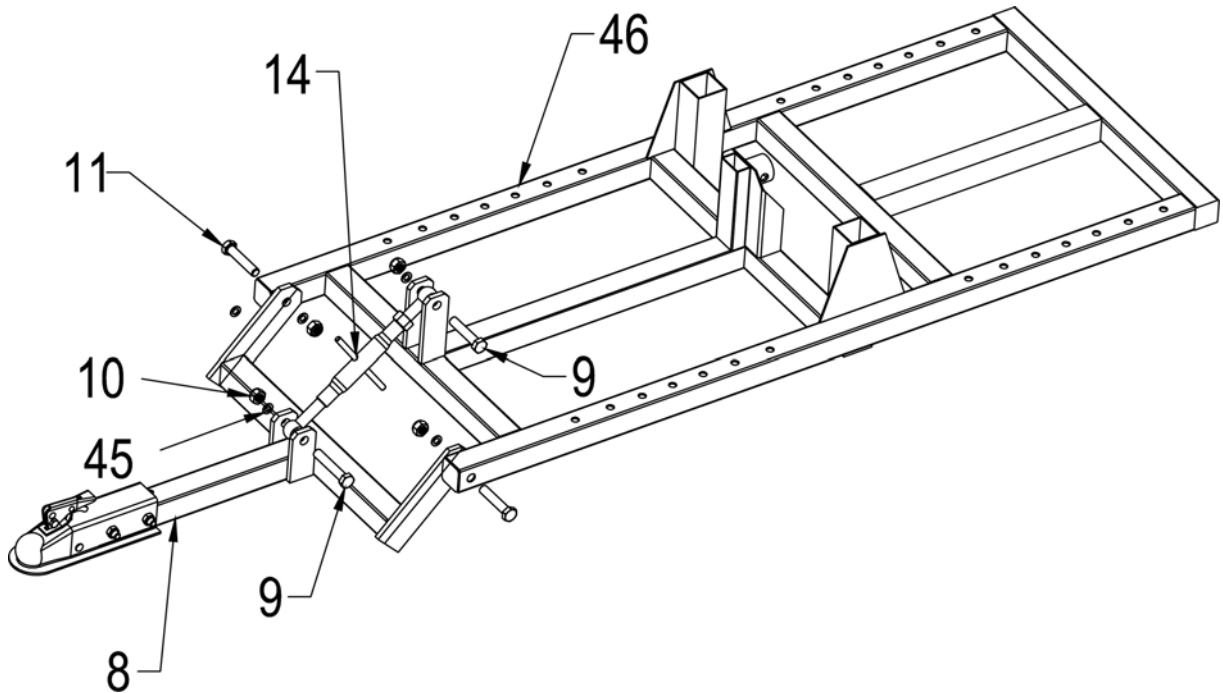
TOWING SAFETY

- When the discs are raised to the highest position, insert the drive pins on the two brackets of the wheel stand to support the frame assembly.

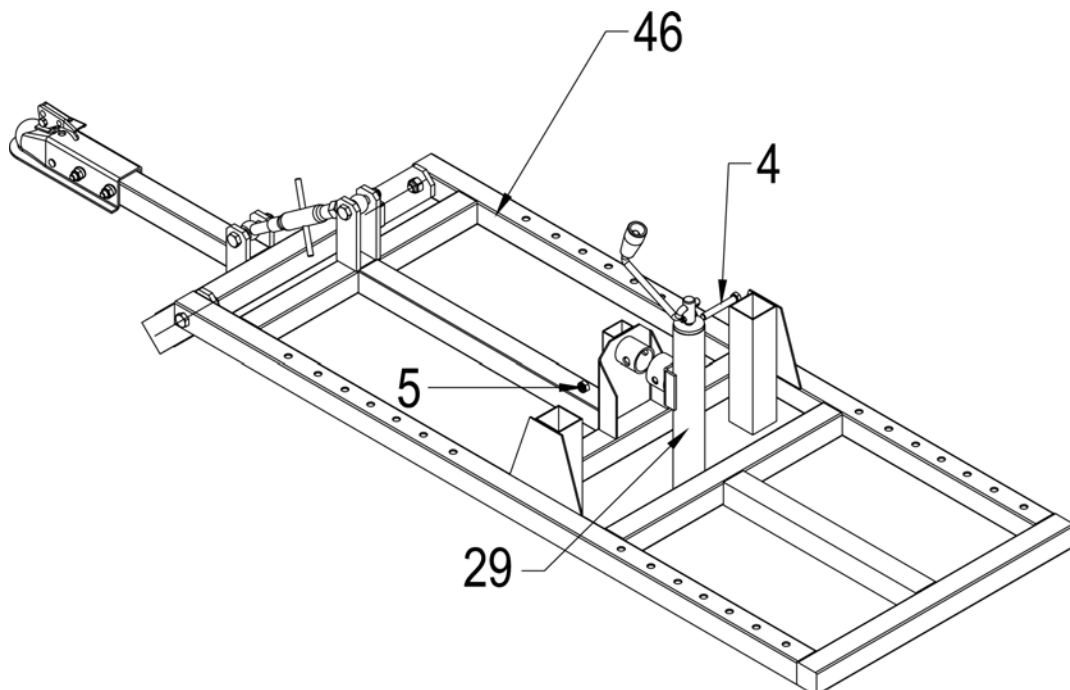


ASSEMBLY

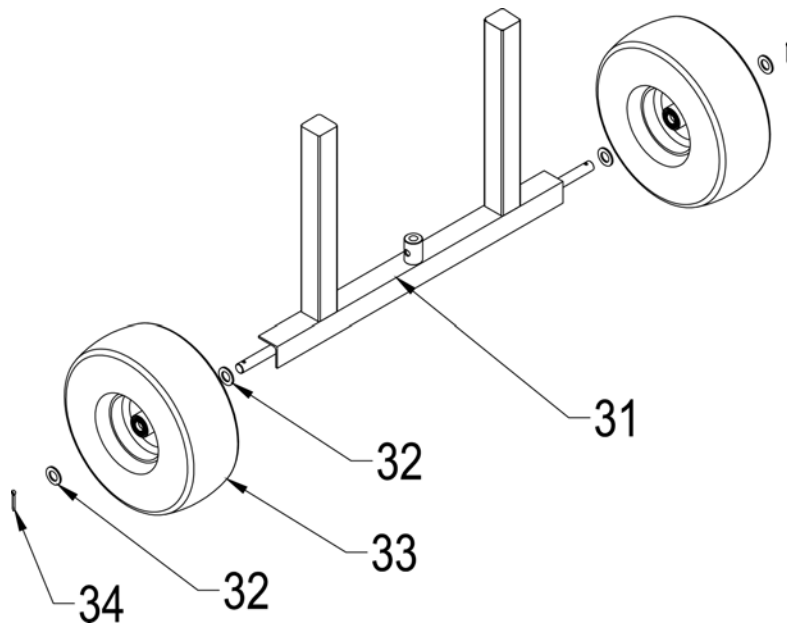
Step 1: Connect tow bar weldment (#8) to the frame weldment (#46) using two sets hex bolt M16x80 (#11), flat washer Ø16 (#45) and hex lock nut M16 (#10), then attach adjusting lever assembly (#14) to the frame weldment and tow bar weldment using two sets hex bolt M16x90 (#9), flat washer Ø16 (#45) and hex lock nut M16 (#10).



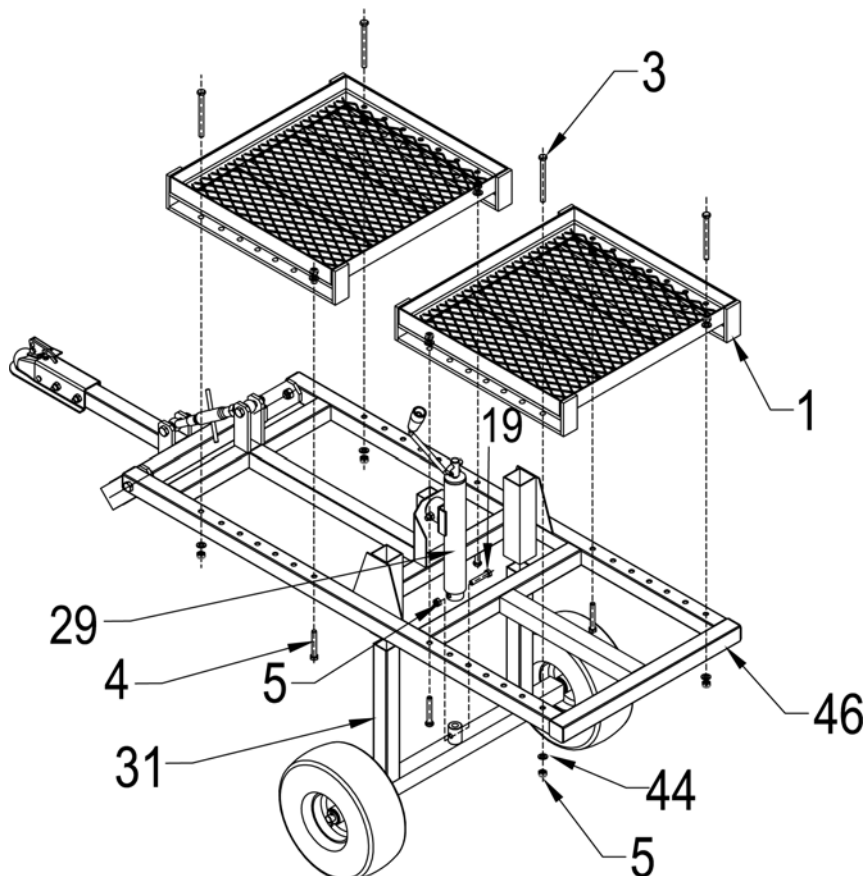
Step 2: Install the mechanical jack (#29) onto the frame weldment (#46) using hex bolt M12x80 (#4) and hex lock nut M12 (#5).



Step 3: Attach wheel (#33) to wheel stand weldment (#31) using flat washer Ø20 (#32) and cotter pin Ø5x30 (#34).

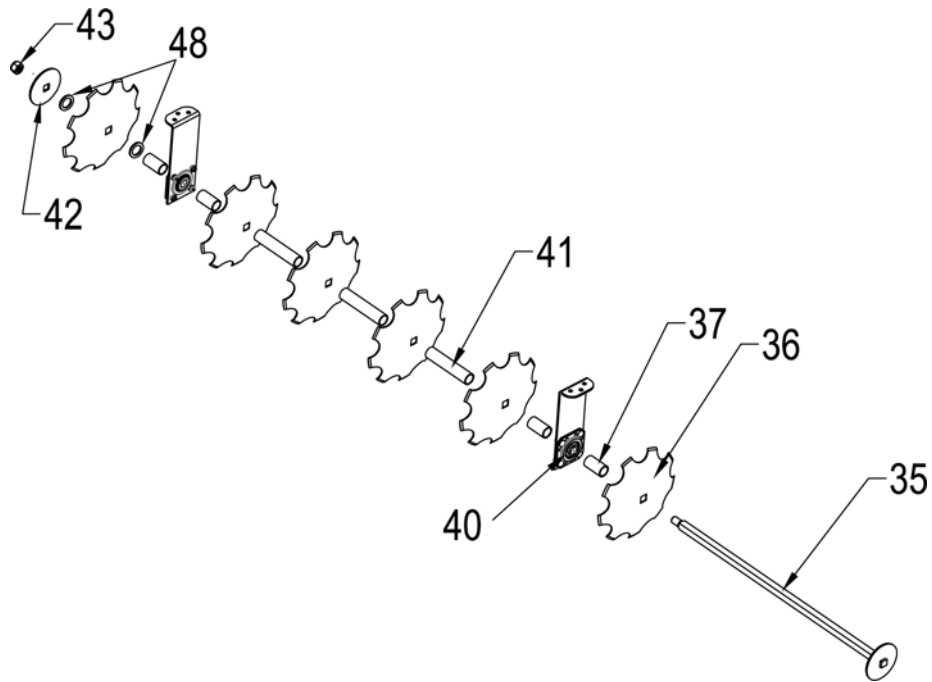


Step 4: Attach tray (#1) to frame weldment (#46) using four sets hex bolt M12x130 (#3), flat washer Ø12 (#44), hex lock nut M12 (#5) and four sets hex bolt M12x80 (#4), flat washer Ø12 (#44), hex lock nut M12 (#5). Install wheel stand weldment (#31) into the mechanical jack (#29) using hex bolt M12x60 (#19) and hex lock nut M12 (#5).

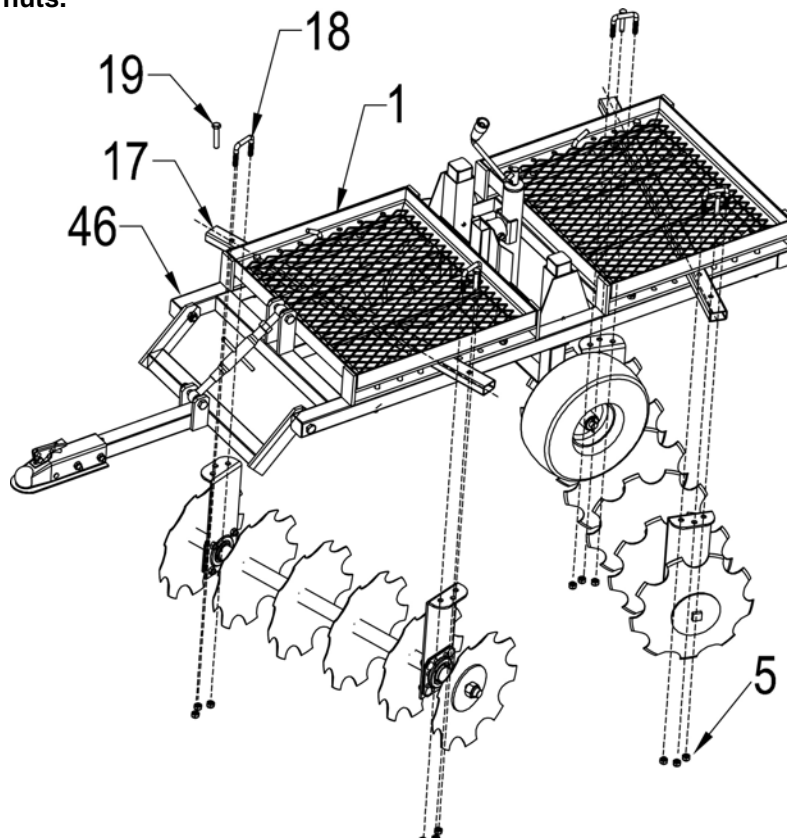


Step 5: Assemble six discs to square axle weldment as shown in diagram. Note the direction of the top mounting area of Ref# 40 – support plate, tighten by hex lock nut M24 (#43). Repeat this step for each gang assembly.

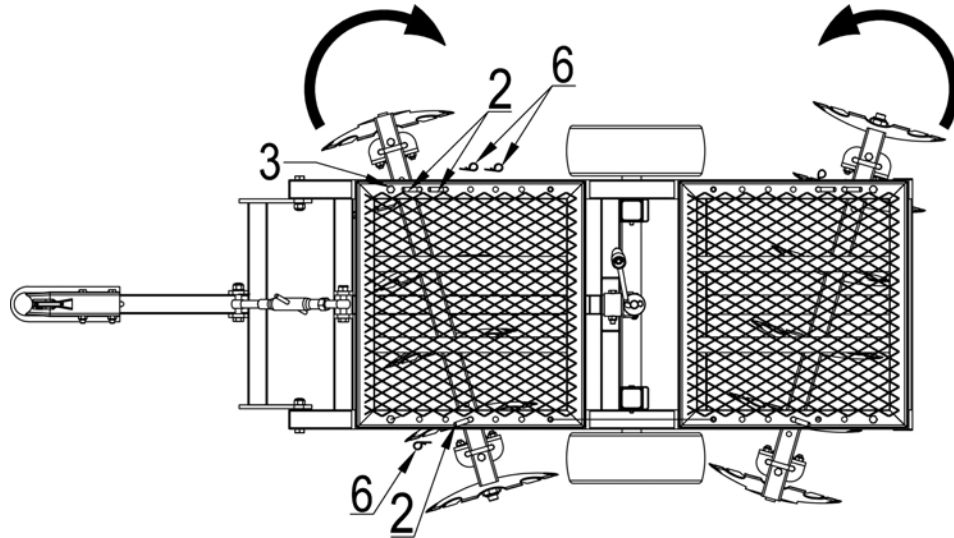
NOTE: If it can't be tightened, please add one or two flat washer Ø36 (#48) properly.



Step 6: Insert disc installation tube (#17) to the middle of tray (#1) and frame weldment (#46). Assemble the disc gang assemblies to the disc installation tube (#17) using four sets U style bolts (#18), hex bolt M12x60 (#19) and hex lock nut M12 (#5) as shown in diagram. WAIT to fully tighten lock nuts.



Step 7: Secure one end of the disc assembly with a hitch pin (#2) and R pin (#6), adjust the angle of another disc assembly to suitable location, then secure with a hitch pin (#2) and R pin (#6). The following diagram shows the maximum position of the disc assembly, with a maximum angle of 15 degrees. At this time, it is only necessary to insert a hitch pin on one side of the disc installation tube, and the other side is positioned by a hex bolt M12x130 (#3). Tighten all hardware.



MAINTENANCE

- **Maintain your disc.** It is recommended that the general condition of any disc be examined before it is used. Keep your disc in good repair by adopting a program of conscientious repair and maintenance. If any abnormal vibrations or noise occurs, have the problem corrected before further use. Have necessary repairs made by qualified service personnel.
- **Maintain your mechanical jack:** If your mechanical jack getting tight, follow the below steps to lubricate it. Remove the screw and apply grease in moderation.

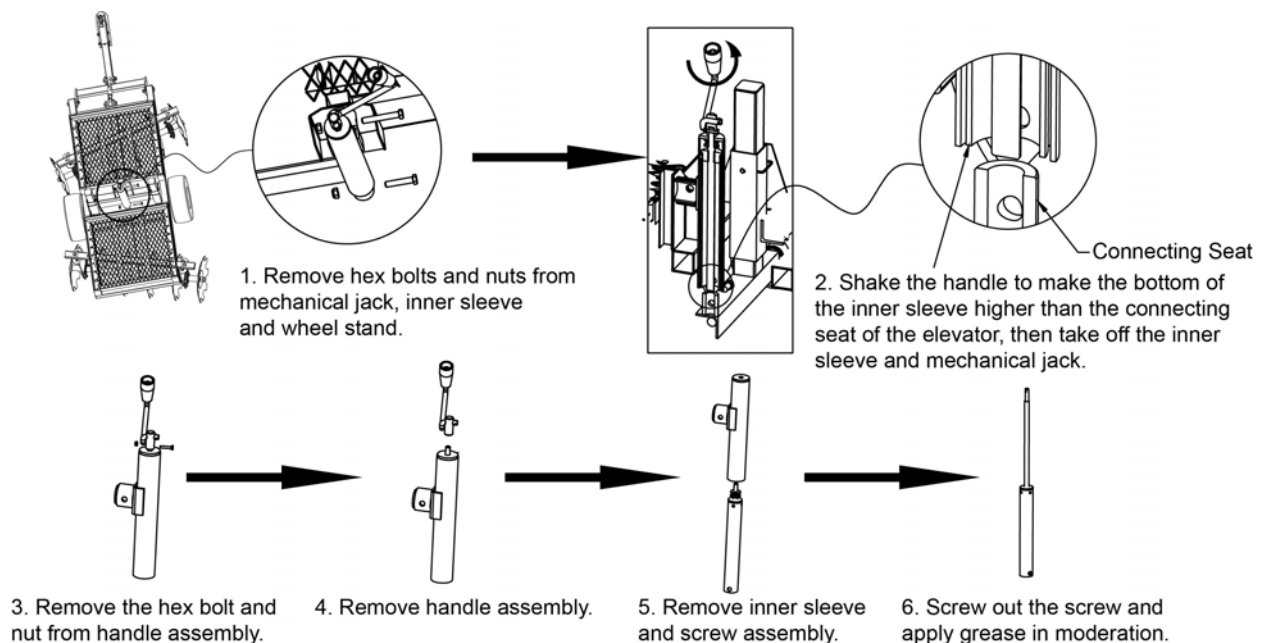
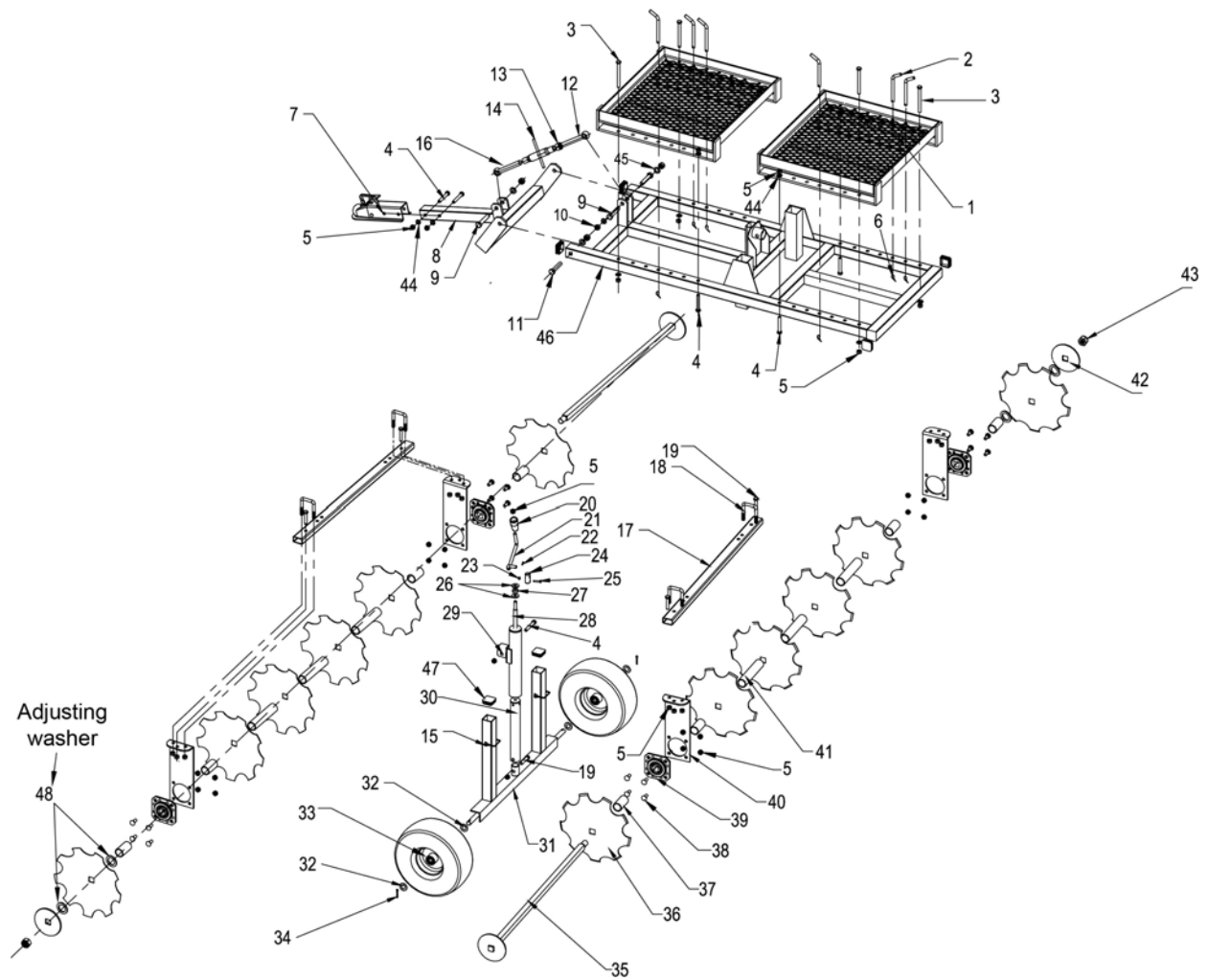


DIAGRAM & PARTS LIST



Ref#	Description	Qty
1	Frame	2
2	Hitch Pin	6
3	Hex Bolt M12x130	4
4	Hex Bolt M12x80	7
5	Hex Lock Nut M12	41
6	R Pin	6
7	2" Coupler	1
8	Tow Bar Weldment	1
9	Hex Bolt M16x90	2
10	Hex Lock Nut M16	4
11	Hex Bolt M16x80	2
12	Adjusting Rod A	1
13	Hex Nut M20	1
14	Adjusting Lever	1
15	Drive Pin	2
16	Adjusting Rod B	1
17	Disc Installation Tube	2
18	U Style Bolt	4
19	Hex Bolt M12x60	5
20	Handle Sleeve	1
21	Handle	1
22	Elastic Cylindrical Pin	1
23	Hex Lock Nut M6	1
24	Tube	1
25	Hex Bolt M6x30	1
26	Thick Washer	2
27	Thrust Ball Bearing	1
28	Rod	1
29	Mechanical Jack	1
30	Inner Sleeve	1
31	Wheel Stand Weldment	1
32	Flat Washer Ø20	4
33	15in. Wheel	2
34	Cotter Pin Ø5x30	2
35	Square Axle Weldment	2
36	Disc	12
37	Short Sleeve	8
38	Round Head Square Neck Bolt M12x30	16
39	Bearing Base Assembly	4
40	Support Plate	4

Ref#	Description	Qty
41	Long Sleeve	6
42	Disc Plate	2
43	Hex Lock Nut M24	2
44	Flat Washer Ø12	10
45	Flat Washer Ø16	4
46	Frame Weldment	1
47	Plug	6
48	Flat Washer Ø36	4

For replacement parts and technical questions, please call **1-218-943-6296**.

WARRANTY

One-year limited warranty



TG

PO Box 203

Miltna, MN 56354

Made in CHINA